

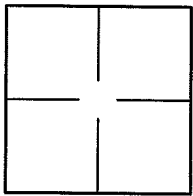
CORNER RECORD

Document Number A.P.# 195-331-20

City of STINSON BEACH

County of MARIN, California

Brief Legal Description LOT 71. 9 R.M. 62



CORNER TYPE

COORDINATES (Optional)

Government Corner Control

Meander Property

Rancho Other

Date of Survey 07/18/13

N. _____
 E. _____
 Zone _____ NAD27 NAD83
 NAD83 Epoch _____
 Elev. _____
 Vert. Datum: NGVD29 NAVD88
 Meas. Units: Metric Imperial

Corner- Left as found Found and tagged Established Reestablished Rebuilt

Identification and type of corner found: Evidence used to identify or procedure used to establish or reestablish the corner:
REESTABLISHED EASTERLY LINE OF LOT 71, USING FOUND MONUMENTS PER 9 R.M. 62

A description of the physical condition of the monument as found and as set or reset: SEE SHEET 2.

SURVEYOR'S STATEMENT

This Corner Record was prepared by me or under my direction in conformance with

the Land Surveyor's Act on JULY 18 2013

Signed Lawrence P. Doyle P.L.S. or R.C.E. No. P.L.S. 4694



COUNTY SURVEYOR'S STATEMENT

This Corner Record was received OCTOBER 25, 2013

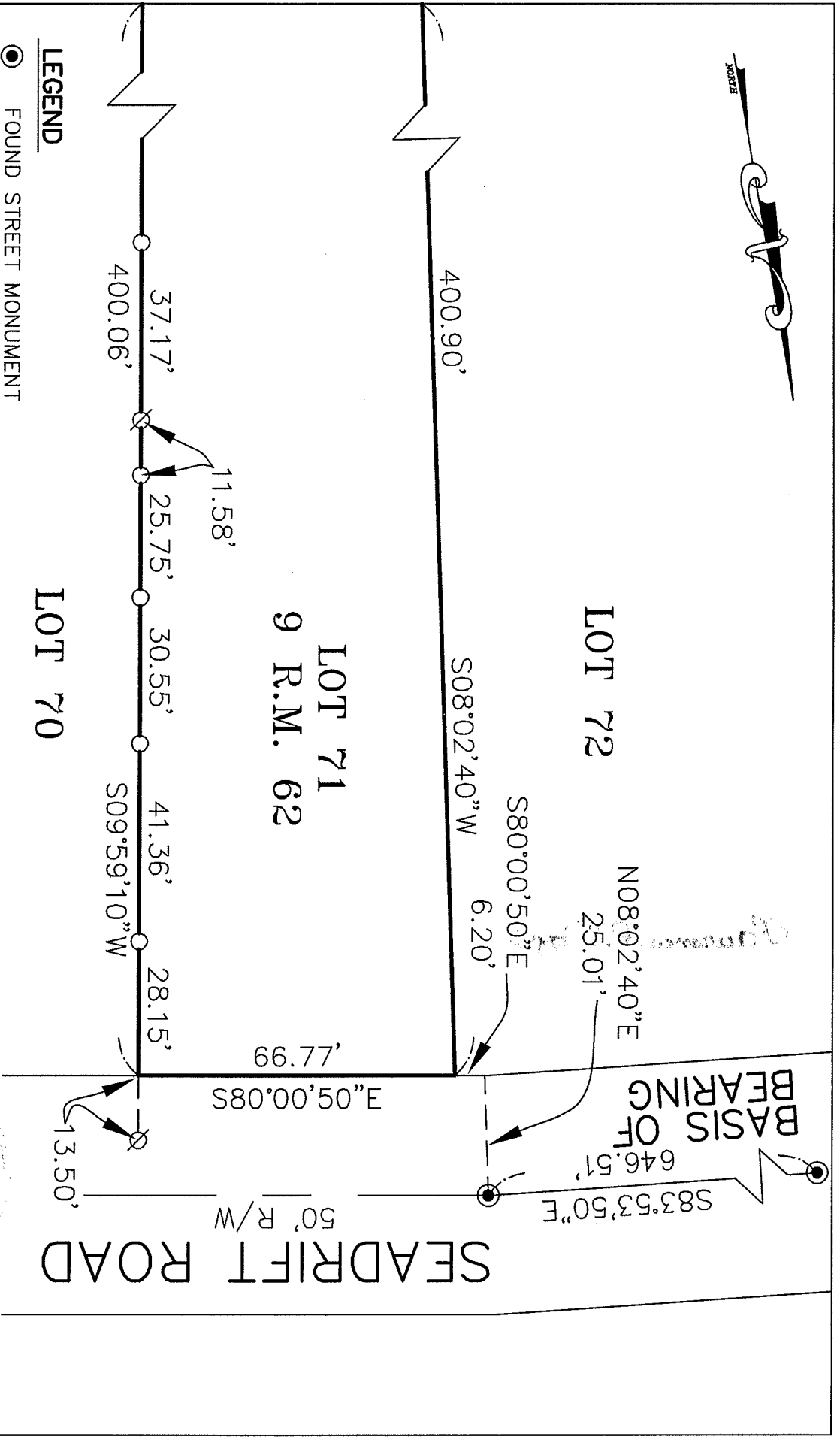
and examined and filed NOVEMBER 21, 2013

Signed [Signature] P.L.S. or R.C.E. No. 7821



Title DEP. CO. SURVEYOR

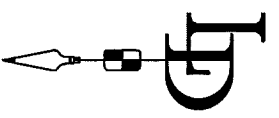
County Surveyor's Comment _____



- LEGEND**
- FOUND STREET MONUMENT
 - ⊗ SET NAIL & TAG, L.S. 4694
 - SET 3/4" PIPE & PLUG, L.S. 4694

BASIS OF BEARING

THE BASIS OF BEARING FOR THIS SURVEY IS S83°53'50"E BETWEEN FOUND STREET MONUMENTS MONUMENTS PER 9 R.M. 62



CORNER RECORD	
LOT 71, 9 R.M. 62	
STINSON BEACH	MARIN COUNTY
CALIFORNIA	
SCALE: 1" = 30'	DRAWN BY:
DATE 07/18/13	SHEET 1 OF 1
LAWRENCE P. DOYLE	
LAND SURVEYOR/CIVIL ENGINEER	
100 HELENS LANE	MILL VALLEY CA 94941
(415-388-9585)	
DRAWING NO. 2396-13	