

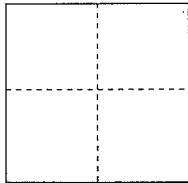
CORNER RECORD

Documented Number APN 195-320-79

City of Stinson Beach

County of Marin, California

Brief Legal Description Lot 201 Seadrift Lagoon (19 RM 80)



CORNER TYPE

Government Corner Control
Meander Property
Rancho Other

COORDINATES(Optional)

N. _____
E. _____
Zone _____ NAD27 NAD83
NAD83 Epoch _____
Elevation _____
Vert. Datum: NGVD 29 NADV88
Meas. Units: Metric Imperial

Date of Survey May 09, 2014

Corner- Left as found Found and tagged Established Reestablished Rebuilt

Identification and type of corner found: Evidence used to identify or procedure used to establish or reestablish the corner:

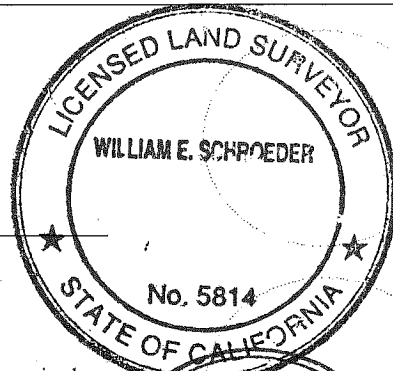
Original Monuments and Established Corners See Page 2

A description of the physical condition of the monument as found and as set or reset:
See Page 2

SURVEYOR'S STATEMENT

This Corner Record was prepared by me or under my direction in conformance with
the Land Surveyor's Act on May 09, 2014

Signed _____ P.L.S. or R.C.E. No.: 5814



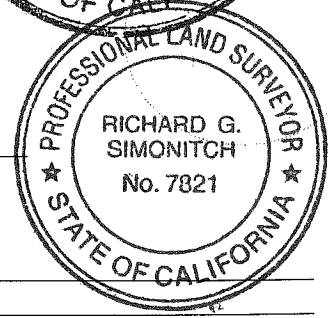
COUNTY SURVEYOR'S STATEMENT

This Corner Record was received JUNE 16, 2014 and examined
and filed JUNE 25, 2014

Signed Richard G. Simonitch P.L.S. or R.C.E. No.: 7821

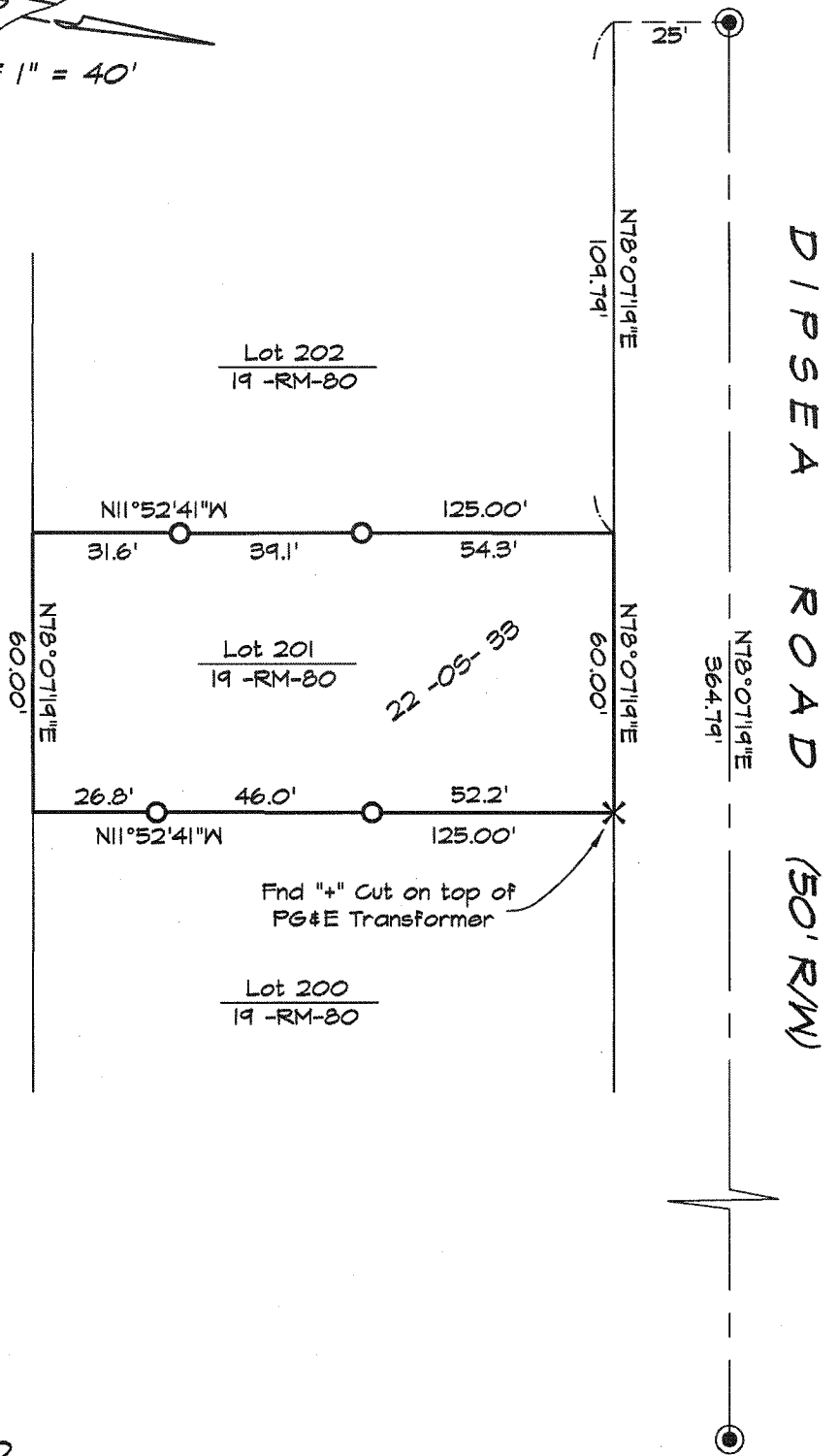
Title DEPUTY

County Surveyor's Comment _____





SCALE 1" = 40'



LEGEND

- = Found standard Marin County monument
- = Set 3/4" Iron Pipe with plastic cap
" LS 5814"