

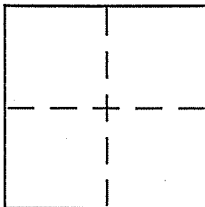
**CORNER RECORD**

City of Stinson Beach

Document Number 195-320-41, -42

County of Marin, California

Brief Legal Description Lots 193 & 194 per 19 RM 51



**CORNER TYPE**

Government Corner  Control   
Meander  Property   
Rancho  Other   
Date of Survey June 29, 2006

**COORDINATES (Optional)**

N. \_\_\_\_\_  
E. \_\_\_\_\_  
Zone \_\_\_\_\_ NAD27  NAD83   
NAD83 Epoch \_\_\_\_\_  
Elev. \_\_\_\_\_  
Vert. Datum: NGVD29  NAVD88   
Meas. Units: Metric  Imperial

Corner -- Left as found  Found and tagged  Established  Reestablished  Rebuilt

Identification and type of corner found: Evidence used to identify or procedure used to establish or reestablish the corner:

See page 2 of 2

A description of the physical condition of the monument as found and as set or reset:

See page 2 of 2

**SURVEYOR'S STATEMENT**

This Corner Record was prepared by me or under my direction in conformance with

the Land Surveyor's Act on 8/1/06

Signed [Signature] P.L.S or R.C.E. No. 678A

**COUNTY SURVEYOR'S STATEMENT**

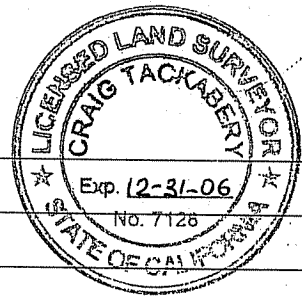
This Corner Record was received 8-25-2006

and examined and filed 9-25-2006

Signed [Signature] P.L.S or R.C.E. No. 712P

Title COUNTY SURVEYOR

County Surveyor's Comment \_\_\_\_\_



**REFERENCE**

[A] "MAP OF SEADRIFT LAGOON SUBD. NO. TWO" FILED FOR RECORD 11/17/1986 IN BOOK 22 OF SURVEYS AT PAGE 33.

[B] RECORD OF SURVEY RECORDED 12/17/1986 IN BOOK 22 OF SURVEYS AT PAGE 33.

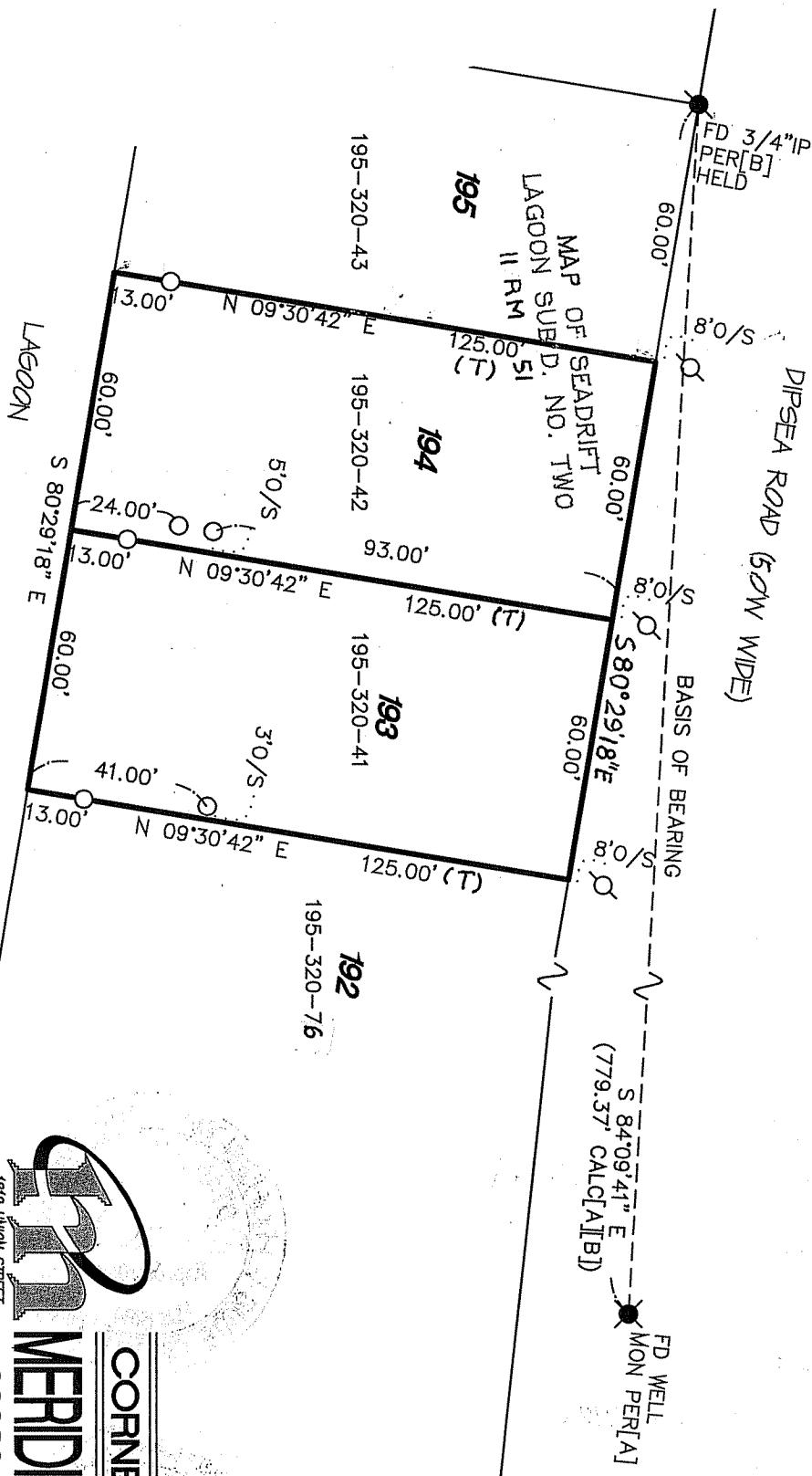
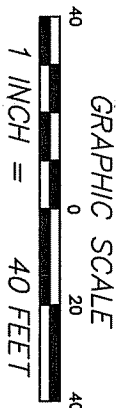
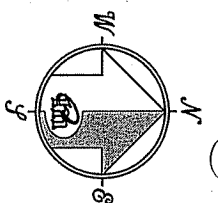
**NOTE**

TWO OF THE CONTROLLING MONUMENTS NEAR THE SUBJECT PROPERTY WERE RUSTED SHUT. ATTEMPTS TO OPEN WERE UNSUCCESSFUL.

**LEGEND**

- FOUND AS NOTED
- FOUND AS NOTED
- SET 5/8" REBAR WITH CAP, PLS 6784
- SET NAIL AND BRASS TAG PLS 6784

NOTE  
RECORD=MEASURED  
(T) TOTAL



**CORNER RECORD**



**MERIDIAN SURVEYING ENGINEERING, INC.**  
 1812 UNION STREET SAN FRANCISCO, CA 94123 (415) 440-4131  
 777 GRAND AVENUE SUITE 202 SAN RAFAEL, CA 94901 (415) 456-5450  
 info@meridiansurvey.com