

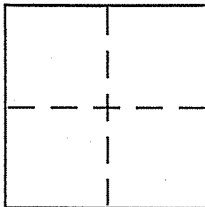
CORNER RECORD

Document Number 195-320-41, -42

City of Stinson Beach

County of Marin, California

Brief Legal Description Lots 193 & 194 per 19 RM 51



CORNER TYPE

Government Corner Control
Meander Property
Rancho Other
Date of Survey June 29, 2006

COORDINATES (Optional)

N. _____
E. _____
Zone _____ NAD27 NAD83
NAD83 Epoch _____
Elev. _____
Vert. Datum: NGVD29 NAVD88
Meas. Units: Metric Imperial

Corner -- Left as found Found and tagged Established Reestablished Rebuilt

Identification and type of corner found: Evidence used to identify or procedure used to establish or reestablish the corner:

See page 2 of 2

A description of the physical condition of the monument as found and as set or reset:

See page 2 of 2

SURVEYOR'S STATEMENT

This Corner Record was prepared by me or under my direction in conformance with

the Land Surveyor's Act on 8/1/06

Signed [Signature] P.L.S or R.C.E. No. 678A

COUNTY SURVEYOR'S STATEMENT

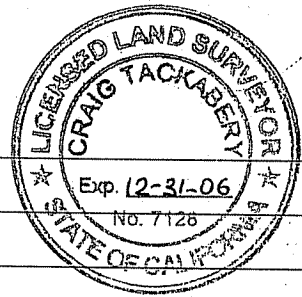
This Corner Record was received 8-25-2006

and examined and filed 9-25-2006

Signed [Signature] P.L.S or R.C.E. No. 712P

Title COUNTY SURVEYOR

County Surveyor's Comment _____



REFERENCE

- [A] "MAP OF SEADRIFT LAGOON SUB'D. NO. TWO" FILED FOR RECORD 11/17/1986 IN BOOK 22 OF SURVEYS AT PAGE 33.
- [B] RECORD OF SURVEY RECORDED 12/17/1986 IN BOOK 22 OF SURVEYS AT PAGE 33.

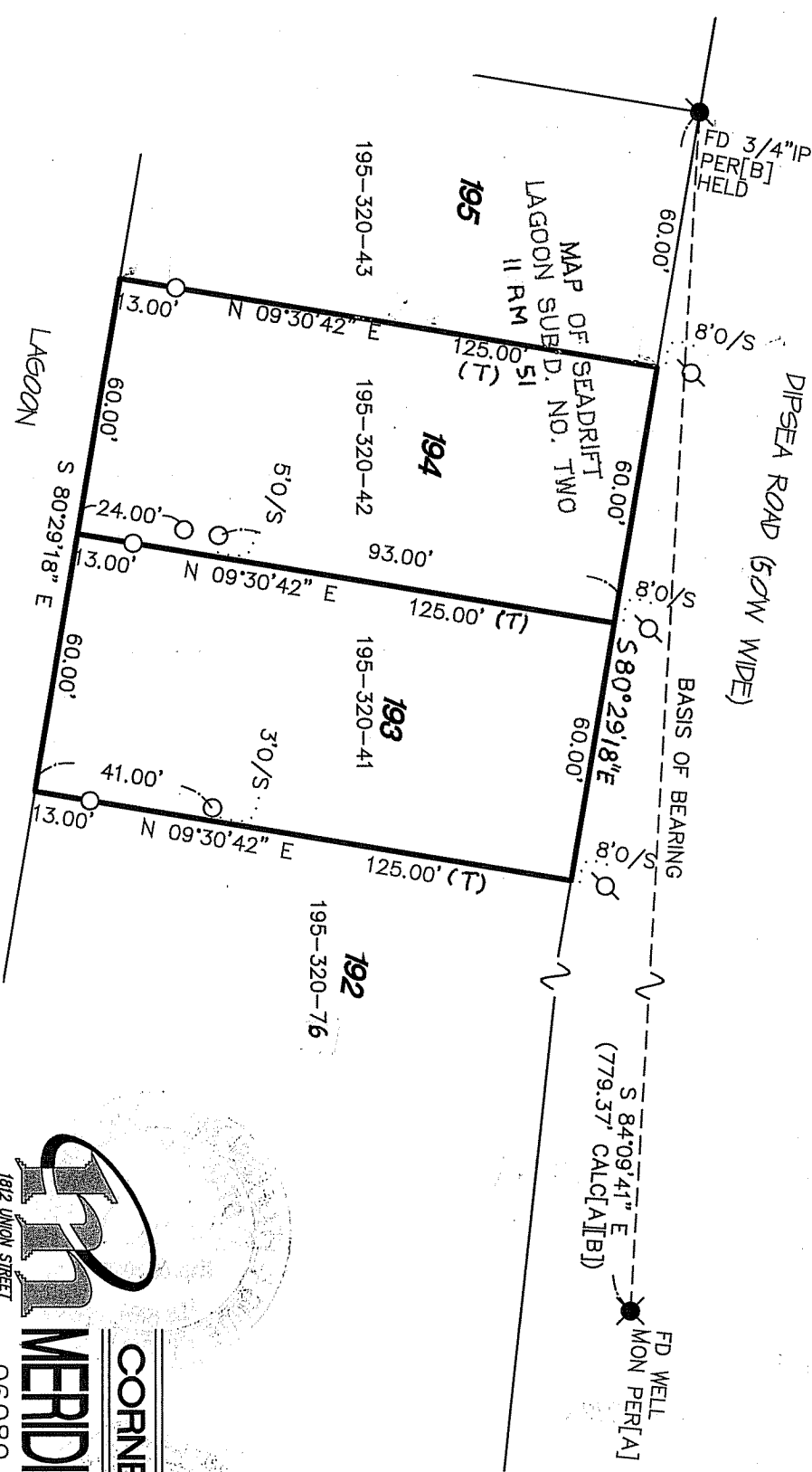
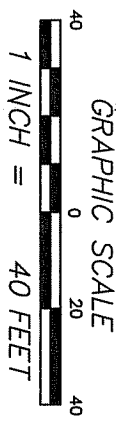
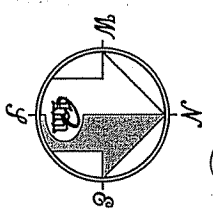
NOTE

TWO OF THE CONTROLLING MONUMENTS NEAR THE SUBJECT PROPERTY WERE RUSTED SHUT. ATTEMPTS TO OPEN WERE UNSUCCESSFUL.

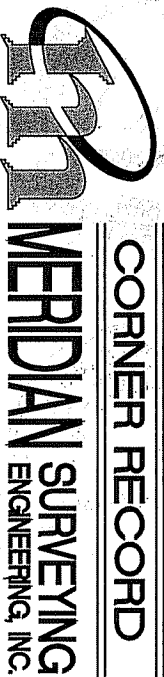
LEGEND

- FOUND AS NOTED
- FOUND AS NOTED
- SET 5/8" REBAR WITH CAP, PLS 6784
- SET NAIL AND BRASS TAG PLS 6784

NOTE
 RECORD=MEASURED
 (T) TOTAL



CORNER RECORD



MERIDIAN SURVEYING ENGINEERING, INC.
 1812 UNION STREET SAN FRANCISCO, CA 94123 (415) 440-4131
 777 GRAND AVENUE SUITE 202 SAN RAFAEL, CA 94901 (415) 456-6460
 info@meridiansurvey.com