

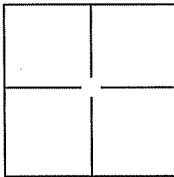
CORNER RECORD

Document Number A.P.N. 195-310-18

City of Stinson Beach

County of Marin, California

Brief Legal Description Lot 109, Map of Seadrift Subd. No. Two, 320 Seadrift Road, 9 RM 62.



CORNER TYPE

Government Corner Control
 Meander Property
 Rancho Other

Date of Survey 21 March 2008

COORDINATES(Optional)

N. _____
 E. _____
 Zone _____ NAD27 NAD83
 NAD83 Epoch _____
 Elev. _____
 Vert. Datum: NGVD29 NADV88
 Meas. Units: Metric Imperial

Corner - Left as found Found and tagged Established Reestablished Rebuilt

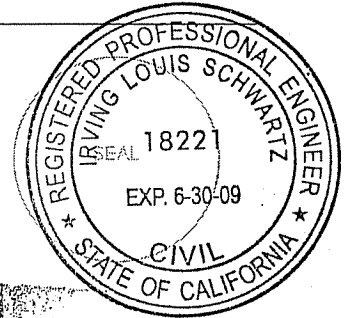
Identification and type of corner found: Evidence used to identify or procedure used to establish or reestablish the corner:
Found Rebar and Yellow Cap P.L.S. 6784 on the easterly line (1), Found Standard Street
Monuments (2) per 9 R.M. 62.

A description of the physical condition of the monument as found and as set or reset:
Set NW and NE corners (2 corners), 1 on the westerly line, 1 on the easterly line (4 Total)
on Lot 109, See Exhibit "A".

SURVEYOR'S STATEMENT

This Corner Record was prepared by me or under my direction in conformance with
 the Land Surveyor's Act on APRIL 4, 2008.

Signed [Signature] P.L.S. or R.C.E. No.: 18221



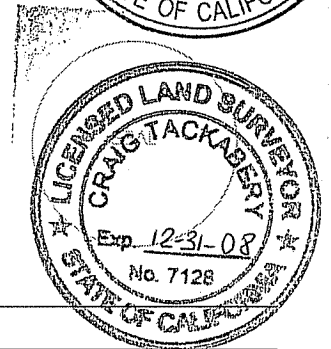
COUNTY SURVEYOR'S STATEMENT

This Corner Record was received APRIL 4, 2008 and examined
 and filed APRIL 24, 2008.

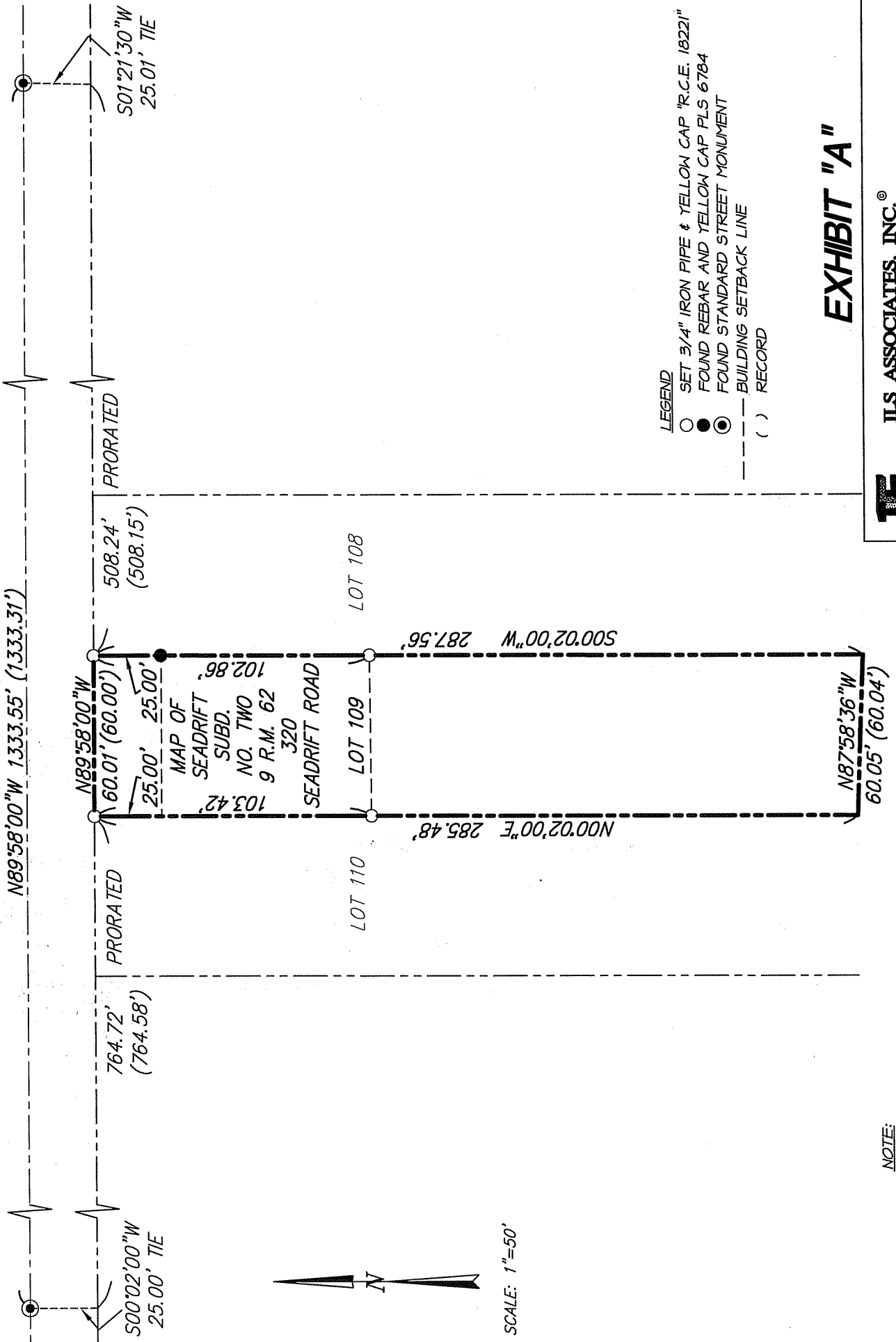
Signed [Signature] P.L.S. or R.C.E. No.: 7128

Title COUNTY SURVEYOR

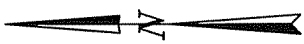
County Surveyor's Comment _____



SEADRIFT ROAD (50' R/W)



SCALE: 1"=50'



- LEGEND**
- SET 3/4" IRON PIPE & YELLOW CAP "R.C.E. 1822"
 - FOUND REBAR AND YELLOW CAP PLS 6784
 - ⊙ FOUND STANDARD STREET MONUMENT
 - BUILDING SETBACK LINE
 - () RECORD

EXHIBIT "A"

I ILS ASSOCIATES, INC.®
 CIVIL ENGINEERING AND LAND SURVEYING

79 GALLI DRIVE SUITE A NOVATO, CA 94948-5777 (415)355-9200 FAX (415)355-2783

NOTE:
 ALL DIMENSIONS AND BEARINGS
 SHOWN HEREON ARE PER 9 R.M. 62,
 UNLESS PRORATED AS SHOWN.

DATE: 04/01/2008
 FILE: 7925CR.dwg
 PAGE 2 OF 2

A.P.N. 195-310-18