

# CORNER RECORD

Agency Index CR 23-008

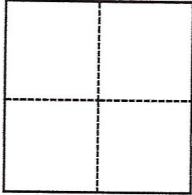
Document Number APN 195-310-17

City of Stinson Beach County of Marin, California

Brief Legal Description Lot 109 per 9 RM 62 & Corner Record for APN 195-310-18

### CORNER TYPE

### COORDINATES (Optional)



- Government Corner
- Meander
- Rancho
- Control
- Property
- Other

Date of Survey January 12, 2023

N. \_\_\_\_\_ E. \_\_\_\_\_

Elevation \_\_\_\_\_

Units  Metric  U.S. Survey Foot

Horizontal Datum \_\_\_\_\_

Zone \_\_\_\_\_ Epoch Date \_\_\_\_\_

Vertical Datum \_\_\_\_\_

Complies with Public Resources Code §§8801-8819

Complies with Public Resources Code §§8890-8902

PLS Act Ref.:  8765(d)  8771  8773  Other:

Corner/Monument:  Left as found  Established  Rebuilt  Pre-Construction

Found and tagged  Reestablished  Referenced  Post-Construction

Narrative of corner identified and monument as found, set, reset, replaced, or removed:

See sheet #2 for description(s):

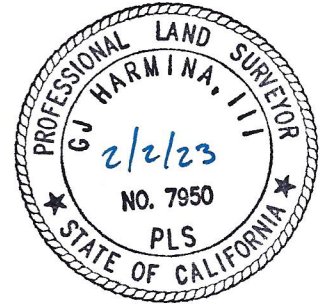
Found and held centerline monuments M31 and M16 matching record data. Found 3/4" iron pipes, yellow cap, RCE18221 as shown on Corner Record in good condition at corner and point on line. Set one line point, brass nail & tag, PLS 7950 in face of wood wall/fence.

### SURVEYOR'S STATEMENT

This Corner Record was prepared by me or under my direction in conformance with

the Professional Land Surveyors' Act on January 13, 2023

Signed [Signature] P.L.S. or R.C.E. No. 7950



### COUNTY SURVEYOR'S STATEMENT

This Corner Record was received February 02, 2023

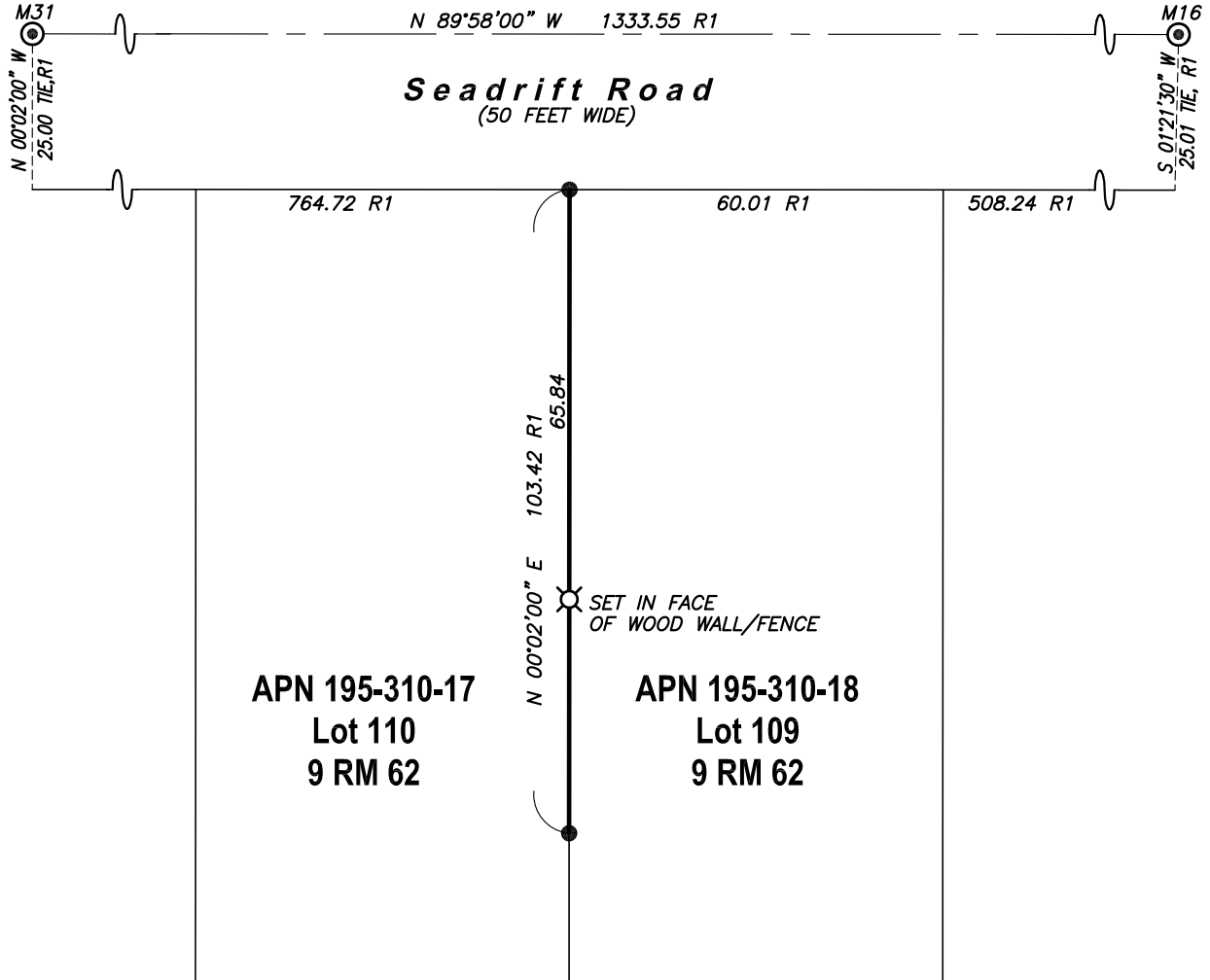
and examined and filed February 02, 2023

Signed T.W. Park P.L.S. [Redacted] No. 8176

Title County Surveyor

County Surveyor's Comment



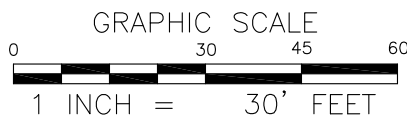
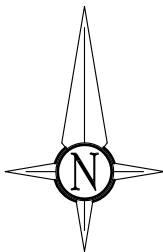


**APN 195-310-17**  
**Lot 110**  
**9 RM 62**

**APN 195-310-18**  
**Lot 109**  
**9 RM 62**

**LEGEND**

- FOUND 3/4-INCH IRON PIPE, YELLOW CAP, RCE 18221, PER R1
- ⊗ SET BRASS NAIL & TAG, PLS 7950 IN FACE OF WOOD WALL/FENCE
- M31 ⊙ FOUND MONUMENT WELL WITH IRON PIN IN CONCRETE, NO TAG
- M16 ⊙ FOUND MONUMENT WELL WITH 2" BRASS DISK, RCE 18221, PER 2018 MAPS 172, MARIN COUNTY RECORDS
- R1 CORNER RECORD FOR APN 195-310-18



**NOTE**

NUMBERED MONUMENTS ARE FROM THAT SURVEY FILED IN BOOK 2018 OF MAPS, AT PAGE 172, MARIN COUNTY RECORDS

**1031Survey, Inc.**

HighDefinitionSurveying  
 1857 Rainier Circle, Petaluma, California, 94954  
 415-827-6370