

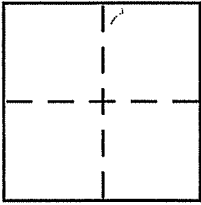
CORNER RECORD

Document Number 195-290-13

City of Bolinas

County of Marin, California

Brief Legal Description LANDS OF H.H. WILKINS PER 14 SURVEYS 38



CORNER TYPE

Government Corner Control
Meander Property
Rancho Other
Date of Survey 05-08-08

COORDINATES (Optional)

N. _____
E. _____
Zone _____ NAD27 NAD83
NAD83 Epoch _____
Elev. _____
Vert. Datum: NGVD29 NAVD88
Meas. Units: Metric Imperial

Corner - Left as found Found and tagged Established Reestablished Rebuilt

Identification and type of corner found: Evidence used to identify or procedure used to establish or reestablish the corner:

See page 2 of 2

A description of the physical condition of the monument as found and as set or reset:

See Page 2 of 2

SURVEYOR'S STATEMENT

This Corner Record was prepared by me or under my direction in conformance with the Land Surveyor's Act on 7/15 2008

Signed [Signature] P.L.S or R.C.E. No. 6784



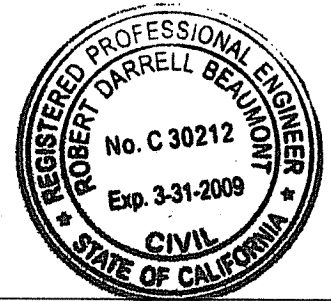
COUNTY SURVEYOR'S STATEMENT

This Corner Record was received 7-21-2008

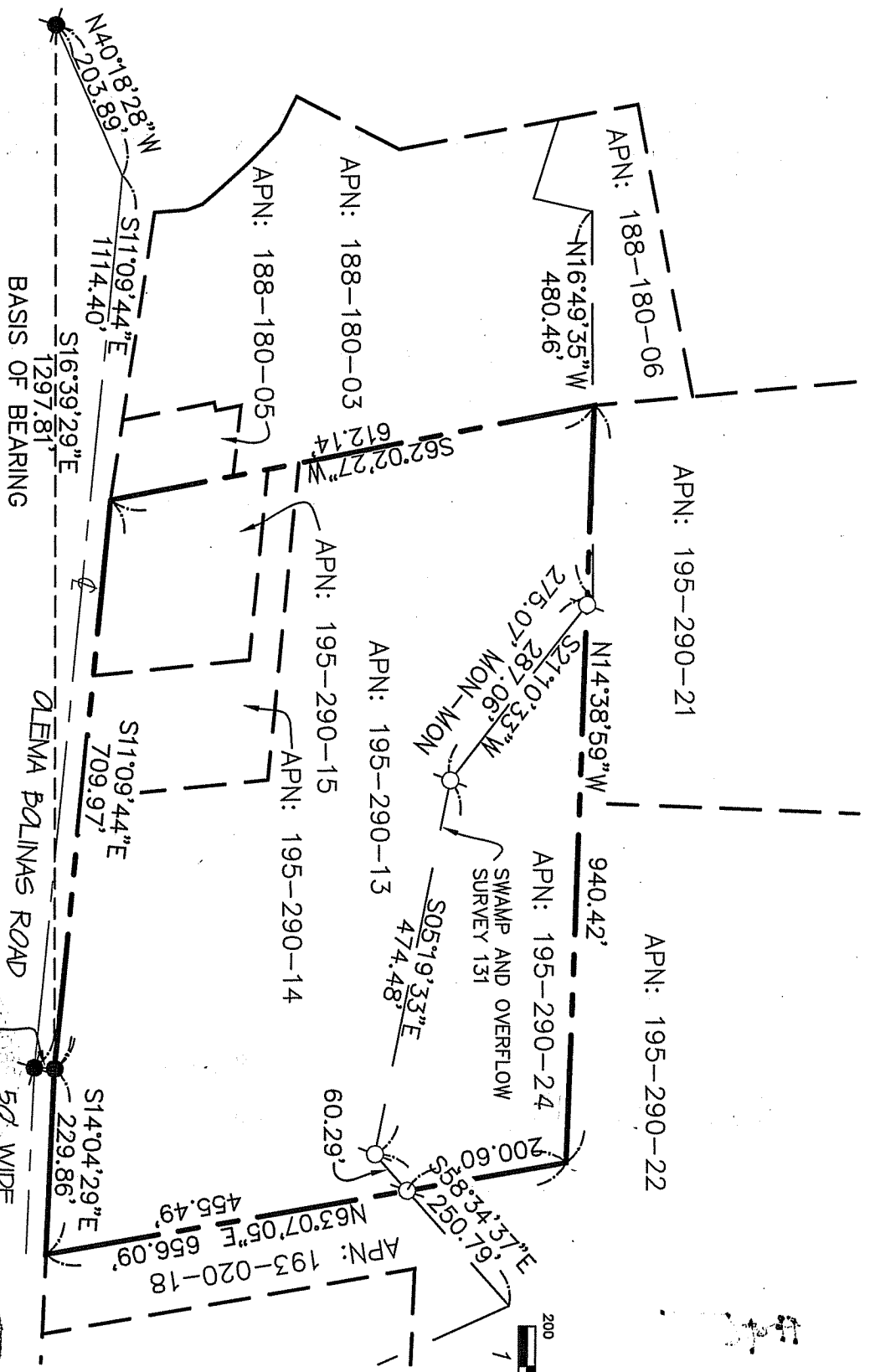
and examined and filed AUGUST 5, 2008

Signed [Signature] P.L.S or R.C.E. No. 30212

Title DEPUTY COUNTY SURVEYOR



County Surveyor's Comment _____



NOTE
 RECORD=MEASURED
 DISTANCES ON [A]
 ARE GRID DISTANCES.
 THESE DISTANCES
 WERE DIVIDED BY
 1.0000667 TO
 OBTAIN GROUND
 DISTANCES SHOWN
 HEREON.

REFERENCE

[A] RECORD OF SURVEY, PORTION
 OF BOLINAS LAGOON &
 OLEMA-BOLINAS COUNTY ROAD,
 FILED FOR RECORD OCTOBER 12,
 1977 IN BOOK 14 OF SURVEYS, AT
 PAGE 38, MARIN COUNTY RECORDS.

LEGEND

- FOUND STANDARD MONUMENT
- FOUND 1/2" IP PER [A]
- SET 5/8" REBAR WITH CAP, PLS 6784

MERIDIAN SURVEYING
 ENGINEERING, INC.

1812 UNION STREET
 SAN FRANCISCO, CA 94123
 (415) 440-4131

777 GRAND AVENUE, SUITE 202
 SAN RAFAEL, CA 94901
 (415) 456-8480

info@meridiansurvey.com