

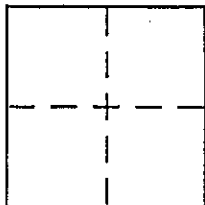
CORNER RECORD

City of STINSON BEACH

Document Number 94-065305

County of MARIN, California

Brief Legal Description PARCEL TWO 21-PM-100 AP #195-233-17



CORNER TYPE

Government Corner  Control   
Meander  Property   
Rancho  Other   
Date of Survey \_\_\_\_\_

COORDINATES (Optional)

N. \_\_\_\_\_  
E. \_\_\_\_\_  
Zone \_\_\_\_\_ NAD27  NAD83   
NAD83 Epoch \_\_\_\_\_  
Elev. \_\_\_\_\_  
Vert. Datum: NGVD29  NAVD88   
Meas. Units: Metric  Imperial

Corner - Left as found  Found and tagged  Established  Reestablished  Rebuilt

Identification and type of corner found: Evidence used to identify or procedure used to establish or reestablish the corner:

FOUND PROPERTY CORNERS AS SHOWN ON REVERSE;  
SET     "     "     "     "     "     "

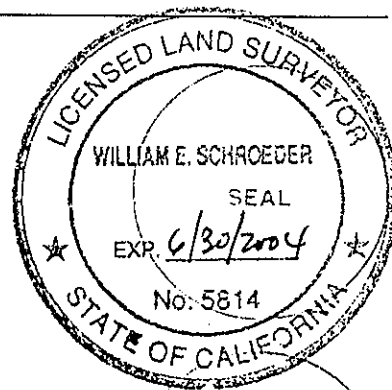
A description of the physical condition of the monument as found and as set or reset: \_\_\_\_\_

SURVEYOR'S STATEMENT

This Corner Record was prepared by me or under my direction in conformance with

the Land Surveyor's Act on APRIL 29 2002

Signed William Schroeder P.L.S or R.C.E. No. 5814



COUNTY SURVEYOR'S STATEMENT

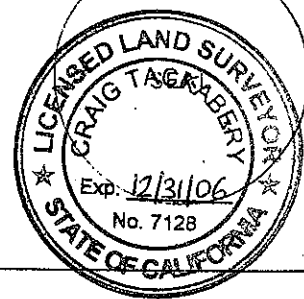
This Corner Record was received NOVEMBER 21, 2002

and examined and filed DECEMBER 17, 2002

Signed Craig Taggerty P.L.S or R.C.E. No. 7128

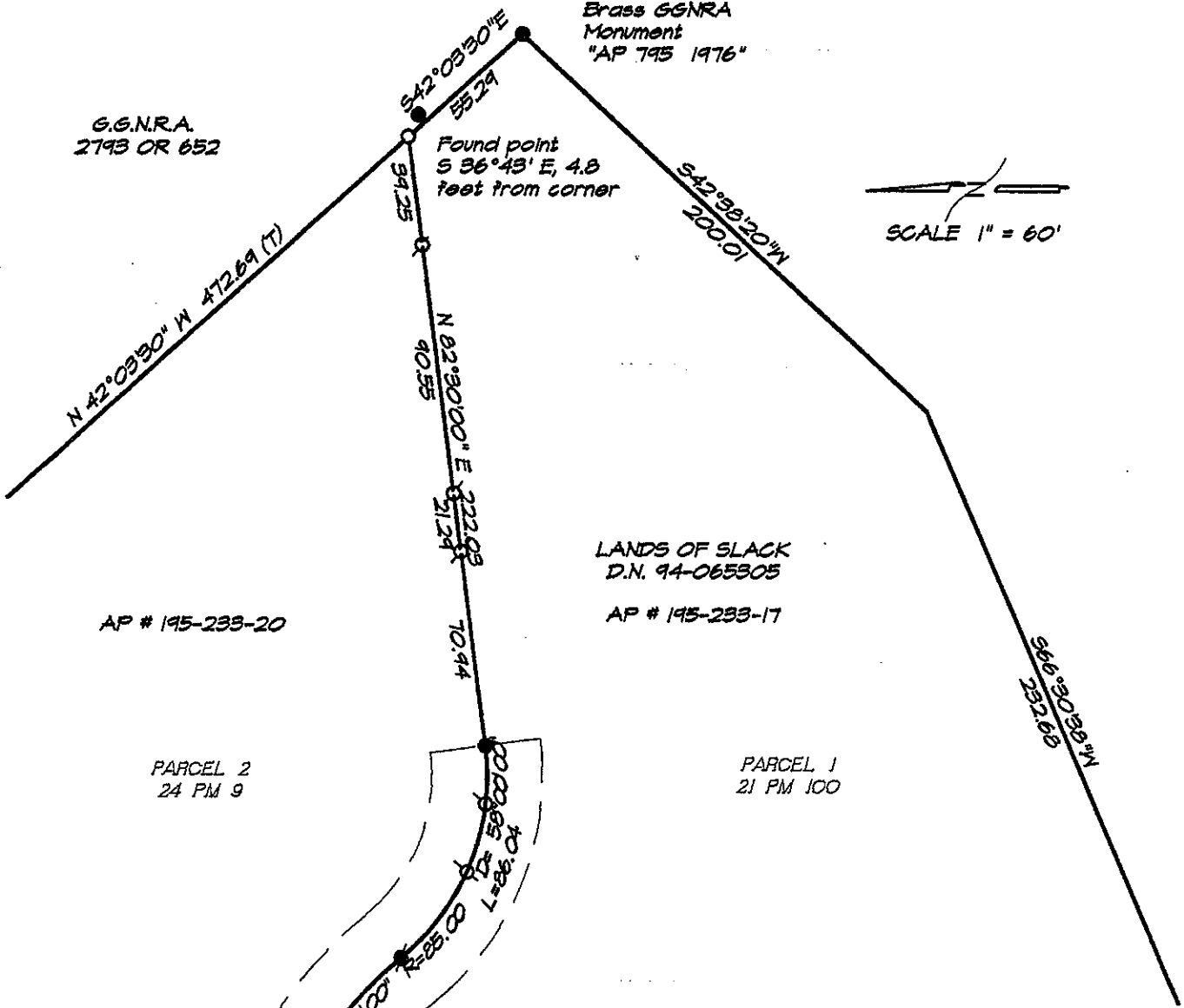
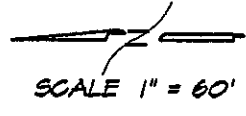
Title DEPUTY

County Surveyor's Comment \_\_\_\_\_



G.G.N.R.A.  
2793 OR 652

Found Standard  
Brass GGNRA  
Monument  
"AP 795 1976"



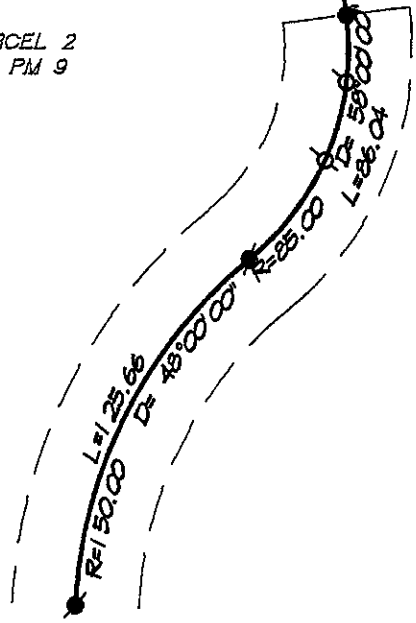
AP # 195-233-20

LANDS OF SLACK  
D.N. 94-065305

AP # 195-233-17

PARCEL 2  
24 PM 9

PARCEL 1  
21 PM 100



- = Fd. Lead & Tag "RCE 10734"
- = Fd. 3/4" Iron Pipe "RCE 10734", unless otherwise noted
- = Set 3/4" Iron Pipe "LS 5814"
- ♂ = Set 3/8" x 8" Spike
- ⊚ = Concrete Nail In Driveway (Line Only)