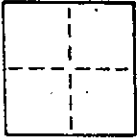


**CORNER RECORD**

COUNTY OF Marin T. \_\_\_\_\_ R. Rancho Saucelito MERIDIAN \_\_\_\_\_ CALIFORNIA  
 CORNER TYPE: GOVT. CORNER  MEANDER  RANCHO  CONTROL  OTHER   
 CORNER IDENTIFICATION — DATE OF VISIT May 30, 1989



*AP # 195-231-23*

CORNER — LEFT AS FOUND  FOUND AND TAGGED  REESTABLISHED OBLITERATED CORNER  REBUILT

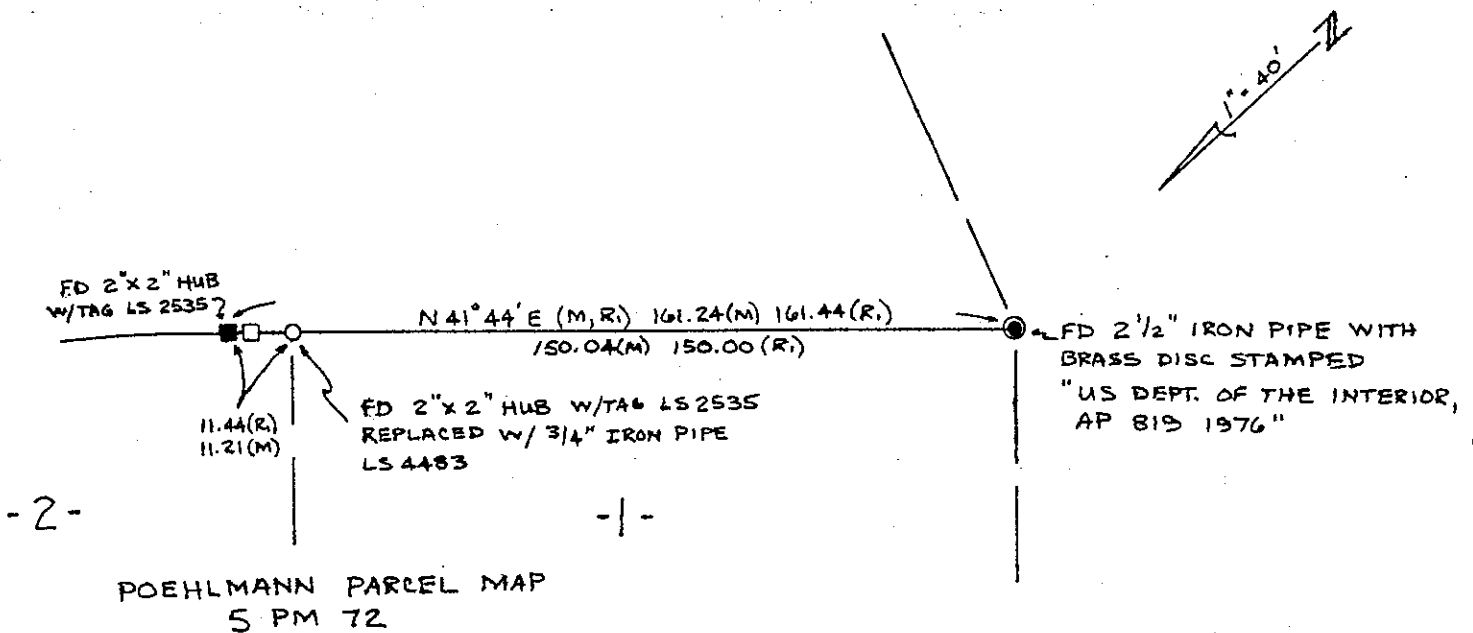
PHYSICAL DESCRIPTION OF CORNER FOUND; EVIDENCE AND METHOD USED TO IDENTIFY OR REESTABLISH

Found 2"x2" hub with tag L.S. 2535 at the most Easterly corner of Parcel One, replaced with 3/4" iron pipe tagged L.S. 4483  
 ^  
 of Poehlman Parcel Map, 5 P.M. 72,

PHYSICAL DESCRIPTION OF MONUMENTS REBUILT OR PERPETUATED

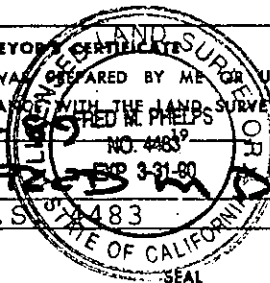
CALIFORNIA COORDINATE SYSTEM ORDER: FIRST  SECOND  THIRD   
 STATIONS USED: NGS (USC & GS)  STATE  COUNTY  OTHER  STATION \_\_\_\_\_ STATION \_\_\_\_\_  
 ZONE \_\_\_\_\_ ELEVATION \_\_\_\_\_ NORTHINGS (Y) \_\_\_\_\_ EASTINGS (X) \_\_\_\_\_

SKETCH: (Include reference tie or witness points, remarks and topo of area)



POEHLMANN PARCEL MAP  
5 PM 72

SURVEYOR'S CERTIFICATE  
 THIS CORNER RECORD WAS PREPARED BY ME OR UNDER MY DIRECTION IN CONFORMANCE WITH THE LAND SURVEYORS ACT ON 10-12-89 NO. 4483  
 SIGNED: FRED M. PHELPS SEP 3-21-89  
 L.S. or R.C.E. No.: L.S. 4483



COUNTY SURVEYOR'S CERTIFICATE  
 THE CORNER RECORD WAS RECEIVED AND EXAMINED AND FILED 10/21/89 1989  
 COUNTY OF MARIN ENGINEER  
 DOCUMENT No. \_\_\_\_\_  
 STATEMENT ON BACK OF SEAL YES  NO

