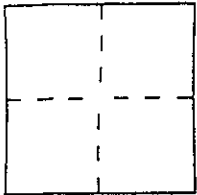


CORNER RECORD

Document Number A.P. 195-173-02

City of STINSON BEACH County of MARIN, California

Brief Legal Description LOT 11 5 R.M. 80



CORNER TYPE

Government Corner  Control   
Meander  Property   
Rancho  Other   
Date of Survey 3/30/00

COORDINATES  
(Optional)

N. \_\_\_\_\_  
E. \_\_\_\_\_  
Zone \_\_\_\_\_ Datum \_\_\_\_\_  
Elev. \_\_\_\_\_

Corner — Left as found  Found and tagged  Established  Reestablished  Rebuilt

Identification and type of corner found: Evidence used to identify or procedure used to establish or reestablish the corner:

① REESTABLISHED THE PROPERTY CORNERS FROM  
THE MONUMENTS SHOWN ON 22 O.S. 97  
② 22 O.S. 97 FOUND THE MONUMENTS SHOWN ON  
5 R.M. 80

A description of the physical condition of the monument as found and as set or reset: SEE PAGE 2

SURVEYOR'S STATEMENT

This Corner Record was prepared by me or under my direction in conformance with the Land Surveyors' Act on JUNE 23 2000

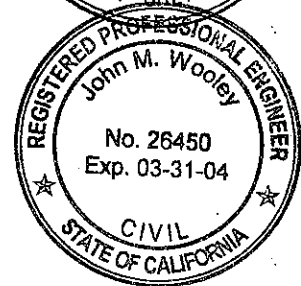
Signed Lawrence P. Doyle L.S. or R.C.E. Number P.L.S. 4694



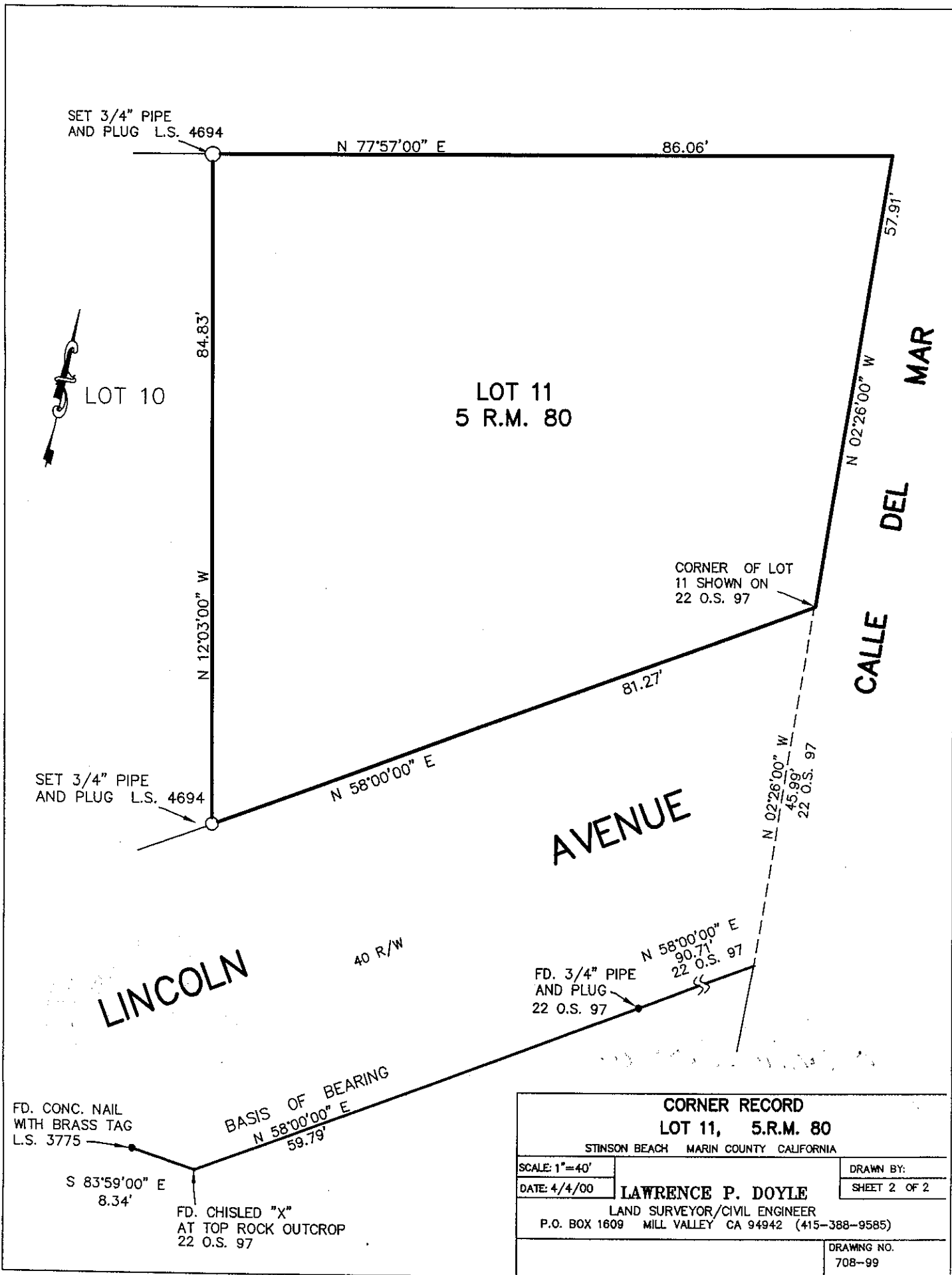
COUNTY SURVEYOR'S STATEMENT

This Corner Record was received July 19, 2000 and examined and filed July 21, 2000.

Signed John M. Wooley Title DEPUTY



County Surveyor's Comment \_\_\_\_\_



SET 3/4" PIPE AND PLUG L.S. 4694

N 77°57'00" E

86.06'

84.83'

LOT 10

LOT 11  
5 R.M. 80

N 12°03'00" W

57.91'  
N 02°26'00" W

MAR

CALLE DEL

CORNER OF LOT 11 SHOWN ON 22 O.S. 97

81.27'

SET 3/4" PIPE AND PLUG L.S. 4694

N 58°00'00" E

AVENUE

N 02°26'00" W  
45.99'  
22 O.S. 97

LINCOLN

40 R/W

FD. 3/4" PIPE AND PLUG 22 O.S. 97  
N 58°00'00" E  
90.71'  
22 O.S. 97

FD. CONC. NAIL WITH BRASS TAG L.S. 3775

BASIS OF BEARING  
N 58°00'00" E  
59.79'

S 83°59'00" E  
8.34'

FD. CHISLED "X" AT TOP ROCK OUTCROP 22 O.S. 97

<b>CORNER RECORD</b>		
<b>LOT 11, 5.R.M. 80</b>		
STINSON BEACH MARIN COUNTY CALIFORNIA		
SCALE: 1"=40'	DRAWN BY:	
DATE: 4/4/00	LAWRENCE P. DOYLE	
LAND SURVEYOR/CIVIL ENGINEER		
P.O. BOX 1609 MILL VALLEY CA 94942 (415-388-9585)		
		DRAWING NO. 708-99