



JERRICO ASSOCIATES
 SUITE 27
 77 MARK DRIVE
 SAN RAFAEL, CA 94903

195-171-09

6985

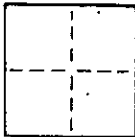
CORNER RECORD

1/1

COUNTY OF Marin T. _____ R. _____ MERIDIAN _____ CALIFORNIA

CORNER TYPE: GOV'T. CORNER MEANDER RANCHO CONTROL OTHER

CORNER IDENTIFICATION — DATE OF VISIT _____ 19____



Stinson Beach

CORNER — LEFT AS FOUND FOUND AND TAGGED REESTABLISHED OBLITERATED CORNER REBUILT

PHYSICAL DESCRIPTION OF CORNER FOUND; EVIDENCE AND METHOD USED TO IDENTIFY OR REESTABLISH

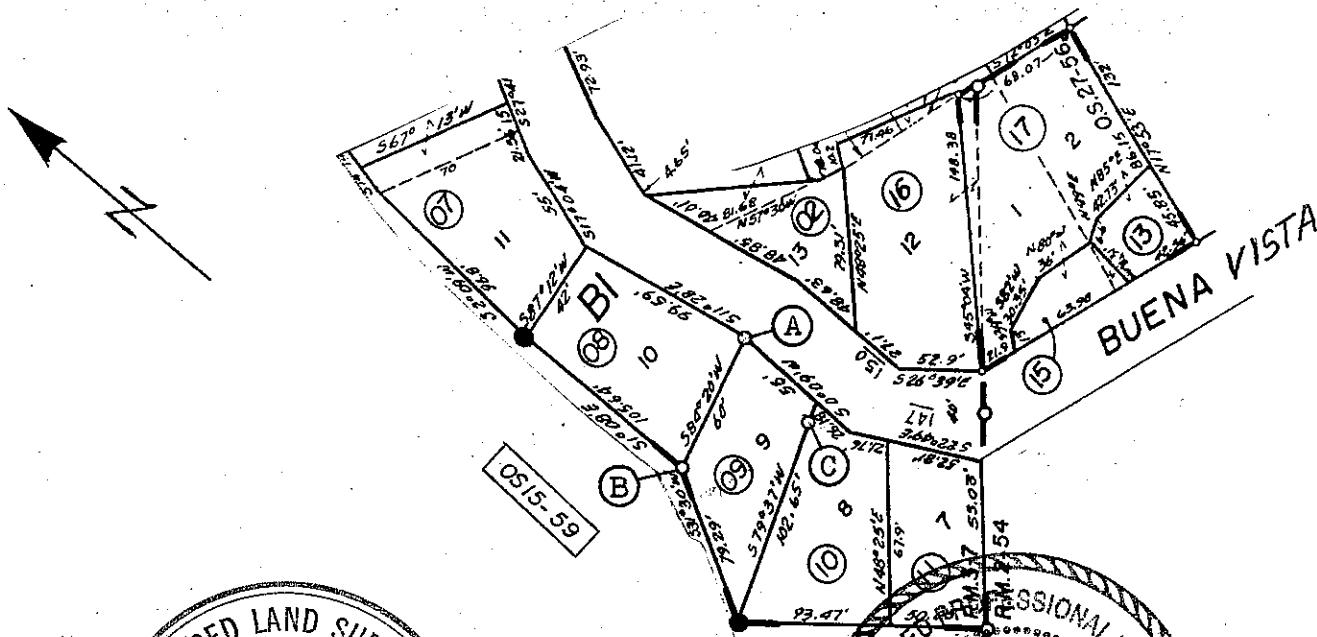
- Found rebar and cap LS 4402 per 15 O.S. 59

PHYSICAL DESCRIPTION OF MONUMENTS REBUILT OR PERPETUATED

- Ⓐ Set rebar and cap LS 3887
- Ⓑ Found rebar and cap LS 4402 0.27' westerly of Cor.
- Ⓒ Set ref. spike nail 7.62 from corner.

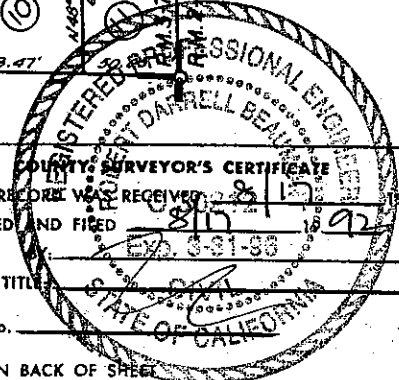
CALIFORNIA COORDINATE SYSTEM ORDER: FIRST SECOND THIRD
 STATIONS USED: NGS (USC & GS) STATE COUNTY OTHER STATION _____ STATION _____
 ZONE _____ ELEVATION _____ NORTHINGS (Y) _____ EASTINGS (X) _____

SKETCH: (Include reference tie or witness points, remarks and topo of area)



SURVEYOR'S CERTIFICATE
 THIS CORNER RECORD WAS PREPARED BY ME OR UNDER MY DIRECTION IN CONFORMANCE WITH THE LAND SURVEYORS ACT ON August 4 1992

SIGNED _____
 L.S. or R.C.E. No. 473 3887
 STATE OF CALIFORNIA *Ex 6/30/96*



COUNTY SURVEYOR'S CERTIFICATE
 THE CORNER RECORD WAS RECEIVED AND EXAMINED AND FILED 8/17/92

TITLE _____
 DOCUMENT No. _____
 STATEMENT ON BACK OF SHEET _____