

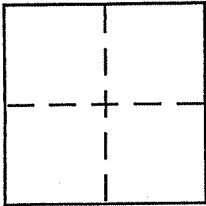
**CORNER RECORD**

Document Number 195-164-22

City of Stinson Beach

County of MARIN, California

Brief Legal Description Parcel 2, 11 P.M. 4



**CORNER TYPE**

- Government Corner  Control
- Meander  Property
- Rancho  Other
- Date of Survey \_\_\_\_\_

**COORDINATES (Optional)**

N. \_\_\_\_\_  
 E. \_\_\_\_\_  
 Zone \_\_\_\_\_ NAD27  NAD83   
 NAD83 Epoch \_\_\_\_\_  
 Elev. \_\_\_\_\_  
 Vert. Datum: NGVD29  NAVD88   
 Meas. Units: Metric  Imperial

Corner - Left as found  Found and tagged  Established  Reestablished  Rebuilt

Identification and type of corner found: Evidence used to identify or procedure used to establish or reestablish the corner:

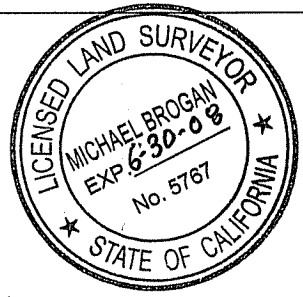
Two Corners of Parcel Two, 11 P.M. 4  
ALL other pipes were found

A description of the physical condition of the monument as found and as set or reset:

See Back

**SURVEYOR'S STATEMENT**

This Corner Record was prepared by me or under my direction in conformance with the Land Surveyor's Act on Jan 22, 2007  
 Signed Michael A. Brogan P.L.S or R.C.E. No. LS 5767



**COUNTY SURVEYOR'S STATEMENT**

This Corner Record was received JANUARY 29, 2007  
 and examined and filed FEBRUARY 16, 2007  
 Signed \_\_\_\_\_ P.L.S or R.C.E. No. 7128  
 Title COUNTY SURVEYOR



County Surveyor's Comment \_\_\_\_\_

K

28

26

24

22

20

18

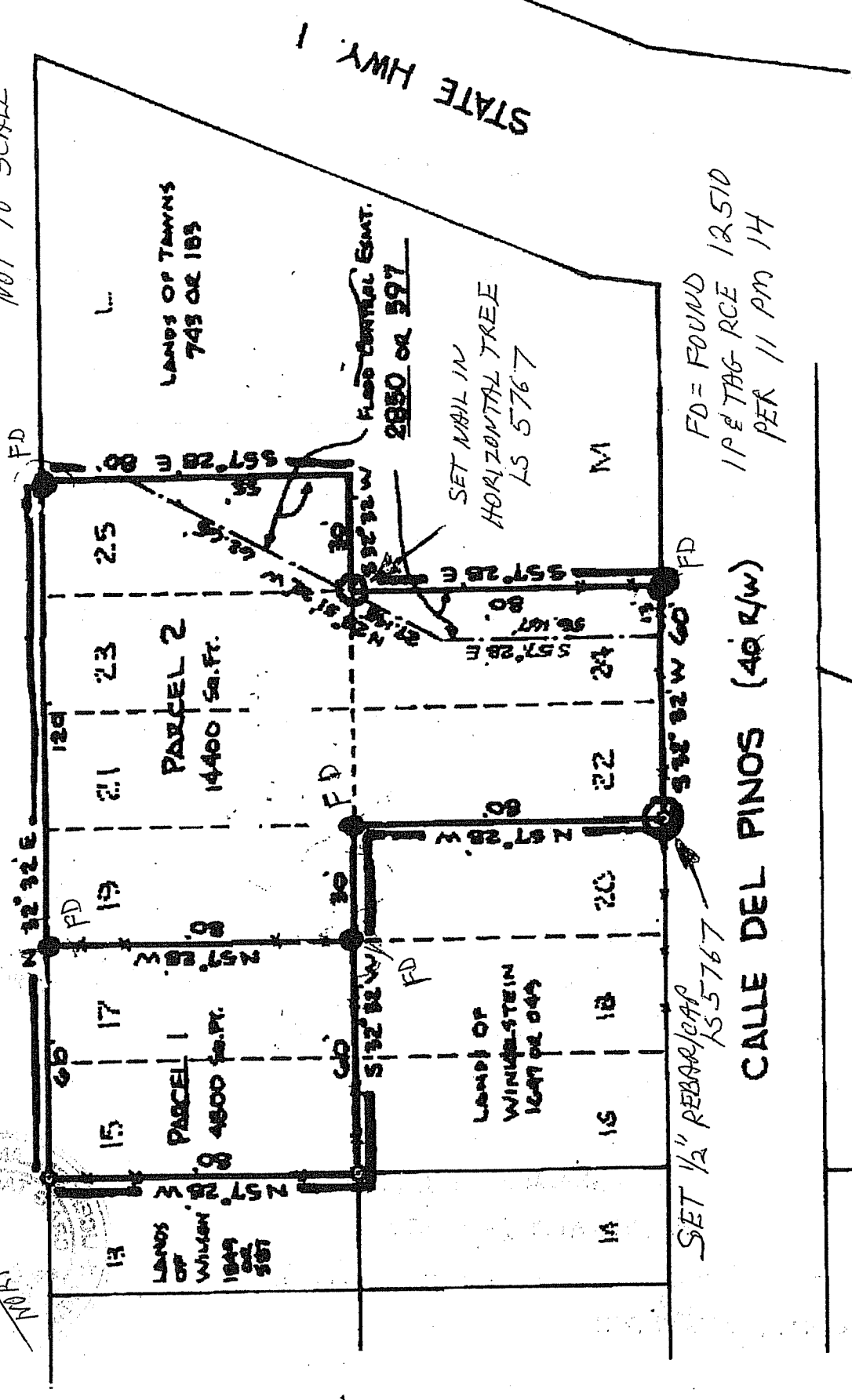
16

14

11 PM 4

NOT TO SCALE

CALLE DEL PRADERO (40' R/W)



LANDS OF TAYNNS  
743 OR 183

PARCEL 2  
14400 sq. ft.

PARCEL 1  
4800 sq. ft.

LANDS OF  
WILSON  
1849 OR  
507

LANDS OF  
WINSTEIN  
1647 OR 049

LANDS OF HEATH  
2651 OR 589

LANDS OF STEPHENS  
1784 OR 607

STATE HWY. 1

FLOOD CONTROL ESENT.  
2850 OR 597

SET NAIL IN  
HORIZONTAL TREE  
LS 5767

FD = FOUND  
1 P TAG RCE 12510  
PER 11 PM 14

SET 1/2" REBAR/CAP  
LS 5767

CALLE DEL PINOS (40' R/W)