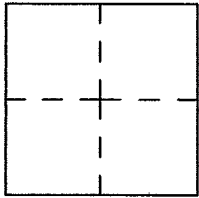


CORNER RECORD

Document number A.P.N. 195-142-20

City of STINSON BEACH County of MARIN, California

Brief Legal Description LOT 19 AS SHOWN UPON "MAP N.H. STINSON'S SUBD. NO. 2", 3 R.M. 7, AND SURVEYED PER 2006 O.S. 71, MARIN COUNTY RECORDS



CORNER TYPE

Government Corner Control
 Meander Property
 Rancho Other
 Date of Survey _____

COORDINATES

N. _____
 E. _____
 Zone _____ Datum _____
 Elev. _____

Corner-- Left as found found and tagged Established Reestablished Rebuilt

Identification and type of corner found: Evidence used to identify or procedure used to establish or reestablish the corner:
UTILIZED MONUMENTS AS SHOWN UPON 2006 O.S. 71 AS A BASIS OF
BEARINGS TO MONUMENT PROPERTY CORNERS OF LOT 19 AS SHOWN UPON SAID MAP.

A description of the physical condition of the monument as found and as set or reset. _____
MONUMENTS MEASURED PER 2006 O.S. 71, AND ARE SHOWN UPON THE ATTACHED DRAWING.

SURVEYOR'S STATEMENT

This Corner Record was prepared by me or under my direction in conformance with the Land Surveyor's Act on April 1 2013.

Signed [Signature] L.S. Number 7744



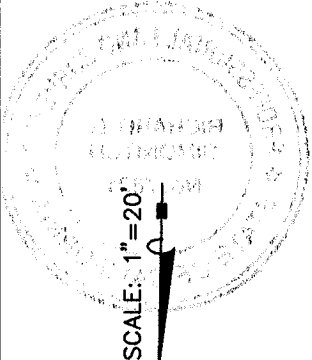
COUNTY SURVEYOR'S STATEMENT

This Corner Record was received APRIL 10, 2013 and examined and filed MAY 14th 2013

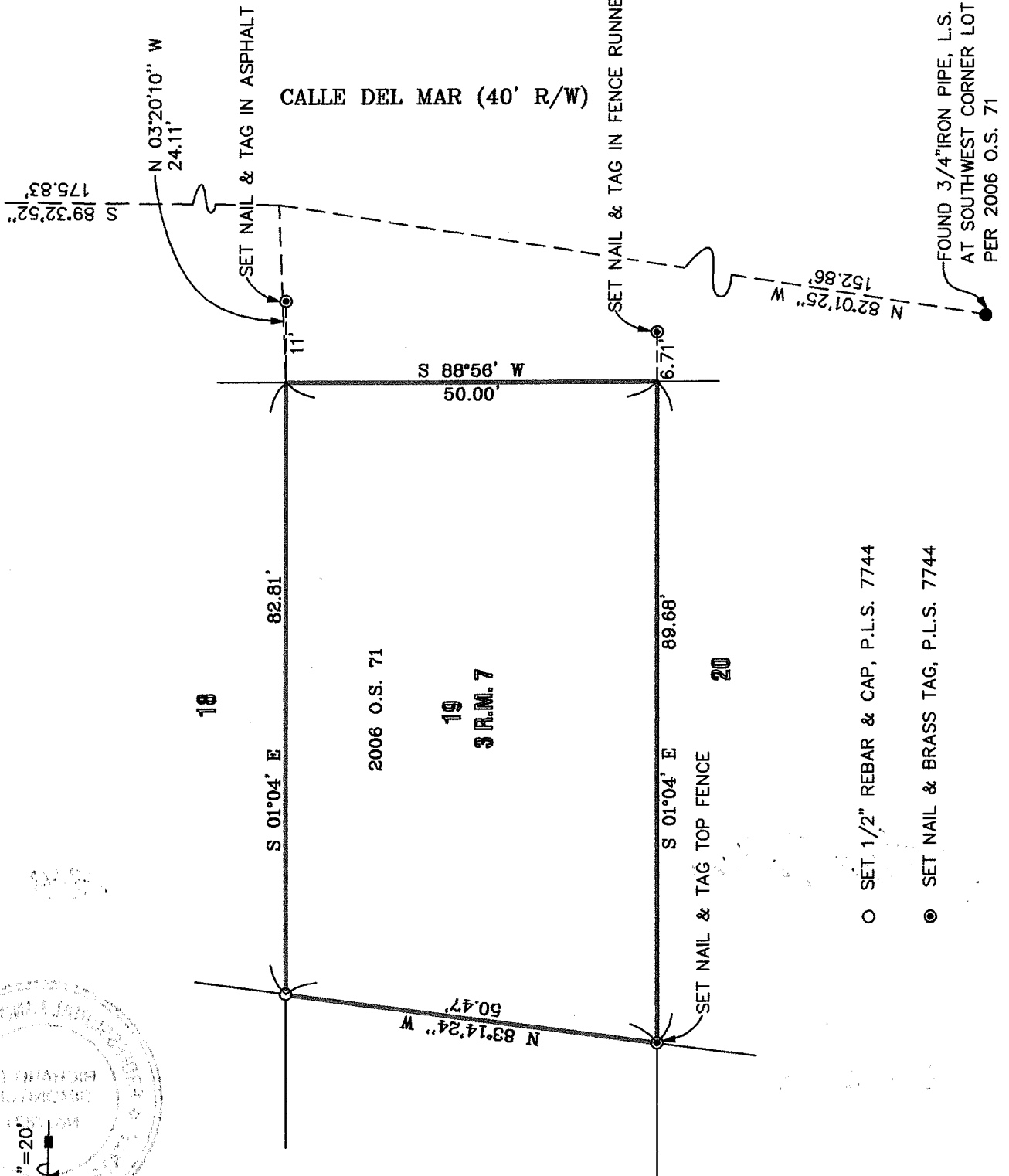
Signed [Signature] Title DEPUTY CO. SURV.



County Surveyor's Comment _____



FOUND 20d SPIKE PER 2006 O.S. 71



○ SET 1/2" REBAR & CAP, P.L.S. 7744

● SET NAIL & BRASS TAG, P.L.S. 7744