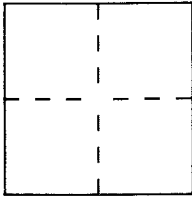


CORNER RECORD

Document Number 195-142-18 & 19

City of STINSON BEACH County of MARIN, California

Brief Legal Description LOTS 17 & 18 PER 3 MAPS 7, SHOWN ON 2006M71



CORNER TYPE

Government Corner Control
Meander Property
Rancho Other
Date of Survey FEB 2013

**COORDINATES
(Optional)**

N. _____
E. _____
Zone _____ Datum _____
Elev. _____

Corner — Left as found Found and tagged Established Reestablished Rebuilt

Identification and type of corner found: Evidence used to identify or procedure used to establish or reestablish the corner:

SEE PAGE 2

A description of the physical condition of the monument as found and as set or reset:

SEE PAGE 2

SURVEYOR'S STATEMENT

This Corner Record was prepared by me or under my direction in conformance with the Land Surveyors' Act on FEBRUARY 26 2013

Signed [Signature] L.S. or R.C.E. Number 7950



COUNTY SURVEYOR'S STATEMENT

This Corner Record was received FEBRUARY 28, 2013 and examined and filed APRIL 2, 2013

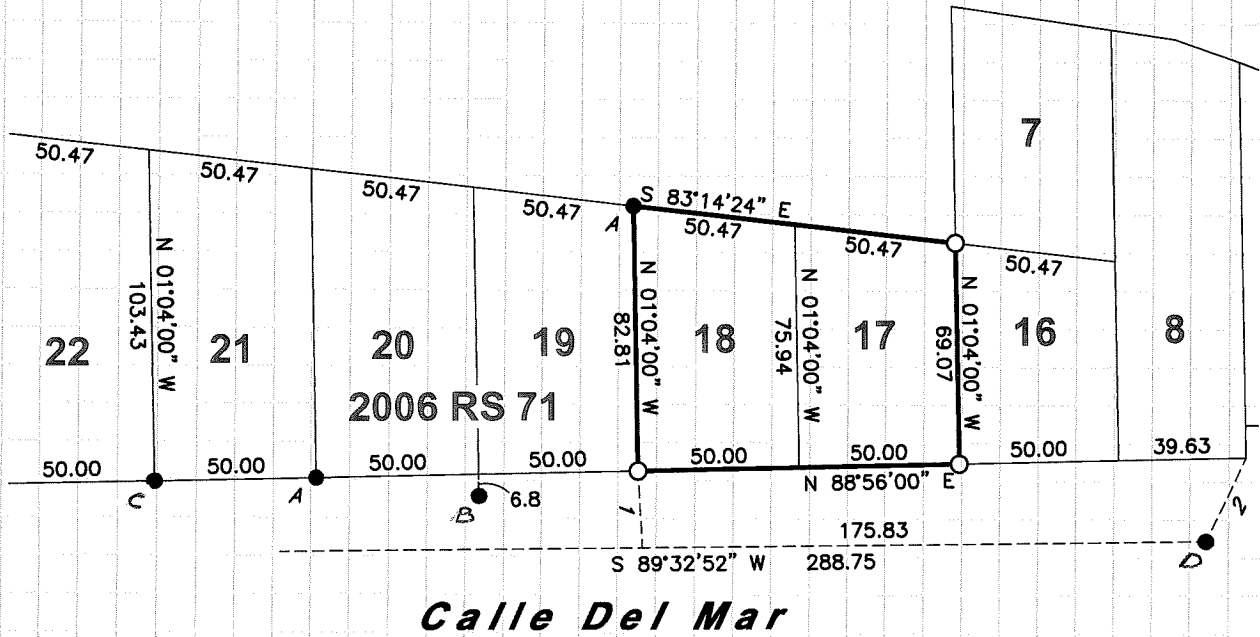
Signed [Signature] Title DEPUTY CO. SURV.



County Surveyor's Comment _____

NORTH
SCALE: 1" = 60'

Map of
N.H.Stinson's Subdivision No.2
3 Maps 7



LEGEND

- FOUND MONUMENT AS SHOWN, SEE DESIGNATION
- SET 5/8 INCH REBAR WITH YELLOW CAP, PLS 7950
- R1 "RECORD OF SURVEY" 2006 MAPS 71, MCR
- MCR MARIN COUNTY RECORDS

LEGEND

- 1 N 03°20'10" W 24.11
- 2 S 25°15'48" W 28.98

MONUMENT DESIGNATION

- A FOUND REBAR AND CAP, PLS 7744
- B FOUND BRASS NAIL AND TAG, PLS 7744
- C FOUND 3/4 INCH IRON PIPE, WOOD PLUG AND BRASS NAIL AND TAG, PLS 5814
- D FOUND 20d NAIL PER R1

STEVEN J. LAFRANCHI & ASSOCIATES, INC.
CIVIL ENGINEERS ~ LAND SURVEYORS ~ LAND PLANNERS

PETALUMA THEATRE SQUARE
140 SECOND STREET, SUITE 312
PETALUMA, CALIFORNIA 94952
707-762-3122 FAX 707-762-3239