

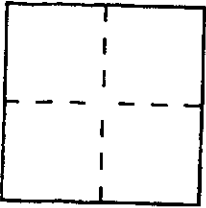
CORNER RECORD

Document Number APN 195-133-10

City of STINSON BEACH

County of MARIN, California

Brief Legal Description LOT 6 IN BLOCK 6, "MAP OF CHARLES ROBINSON TRACT..."
IN BOOK 4 / MAPS / 47



CORNER TYPE

Government Corner Control
 Meander Property
 Rancho Other
 Date of Survey _____

COORDINATES (Optional)

N. _____
 E. _____
 Zone _____ Datum _____
 Elev. _____

Corner — Left as found Found and tagged Established Reestablished Rebuilt

Identification and type of corner found: Evidence used to identify or procedure used to establish or reestablish the corner:
SEE PAGE 2

A description of the physical condition of the monument as found and as set or reset:
SEE PAGE 2

SURVEYOR'S STATEMENT

This Corner Record was prepared by me or under my direction in conformance with the Land Surveyors' Act on JUNE 19, 2000 19__

Signed [Signature] L.S. or R.C.E. Number PLS 6784



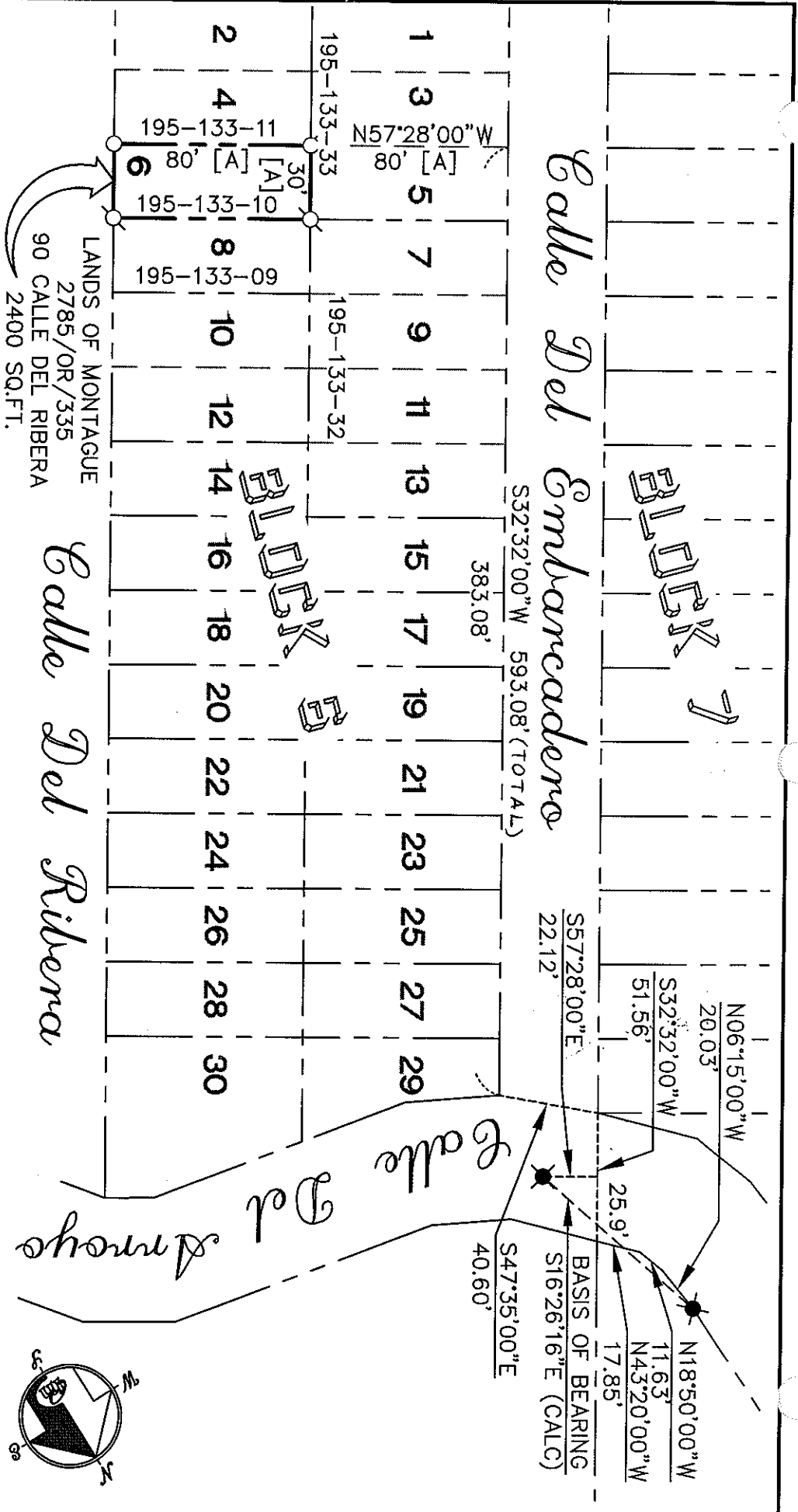
COUNTY SURVEYOR'S STATEMENT

This Corner Record was received JULY 10, 2000 19__ and examined

and filed JULY 10, 2000 19__
 Signed [Signature] Title DEPUTY



County Surveyor's Comment _____



CORNER RECORD

LANDS OF MONTAGUE
2785/OR/335
90 CALLE DEL RIBERA
2400 SQ.FT.

MERIDIAN SURVEYING
ENGINEERING, INC.

1812 UNION STREET
SAN FRANCISCO, CA 94133
(415) 440-4131
info@meridiansurvey.com

100 DRAKES LANDING RD, #164
GREENSBORO, CA 94123
(415) 461-1241

REFERENCE

[A] "MAP OF THE CHARLES ROBINSON TRACT..." FILED FOR RECORD JULY 8, 1913 IN BOOK 4 OF MAPS, AT PAGE 47, MARIN COUNTY RECORDS.

[B] RECORD OF SURVEY FILED FOR RECORD 25 APRIL 1990, IN BOOK 27 OF SURVEYS, AT PAGE 26, MARIN COUNTY RECORDS.

LEGEND

- ✖ FOUND AS NOTED, PER [B]
- SET BRASS NAIL & TAG, PLS 6784
- ⊗ SET 1" IRON PIPE & CAP, PLS 6784

NOTE: RECORD=MEASURED PER [B]

