

CORNER RECORD

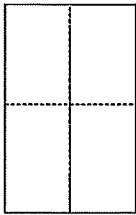
Document Number 195-122-02

City of Stinson Beach

County of Marin, California

Brief Legal Description:

Lot 38 Amended Map of Portion of Map of Subdivision of Stinson Beach Highlands, 6 R.M. 15



CORNER TYPE

Government Corner Control
Meaneder Property
Rancho Other
Date of Survey 11-14-16

COORDINATES (Optional)

N. _____
E. _____
Zone _____ NAD27 NAD83
NAD83 Epoch _____
Elev. _____
Vert. Datum: NGVD29 NAVD88
Meas. Units: Metric Imperial

Corner -- Left as found Found and tagged Established Reestablished Rebuilt

Identification and type of corner found: Evidence used to identify or procedure used to establish or reestablish the corner:

Monuments shown on Record of Survey filed in Book 2000 of Maps at Page 159, Marin County Records were found to be in record position, and used to reestablish the southeasterly most corner of Lot 38 Amended Map of a Portion of Map of Subdivision of Stinson Beach Highlands.

A description of the physical condition of the monument as found and as set or reset:

Set 1/2" iron pipe tagged LS 7237 at southeasterly corner of Lot 38, 6 R.M. 15

SURVEYOR'S STATEMENT

This Corner Record was prepared by me or under my direction in conformance with the Land Surveyor's Act on November 21 2016

Signed Michael E. Ford P.L.S. or R.C.E. No. PLS 7237



COUNTY SURVEYOR'S STATEMENT

This Corner Record was received NOVEMBER 28, 2016

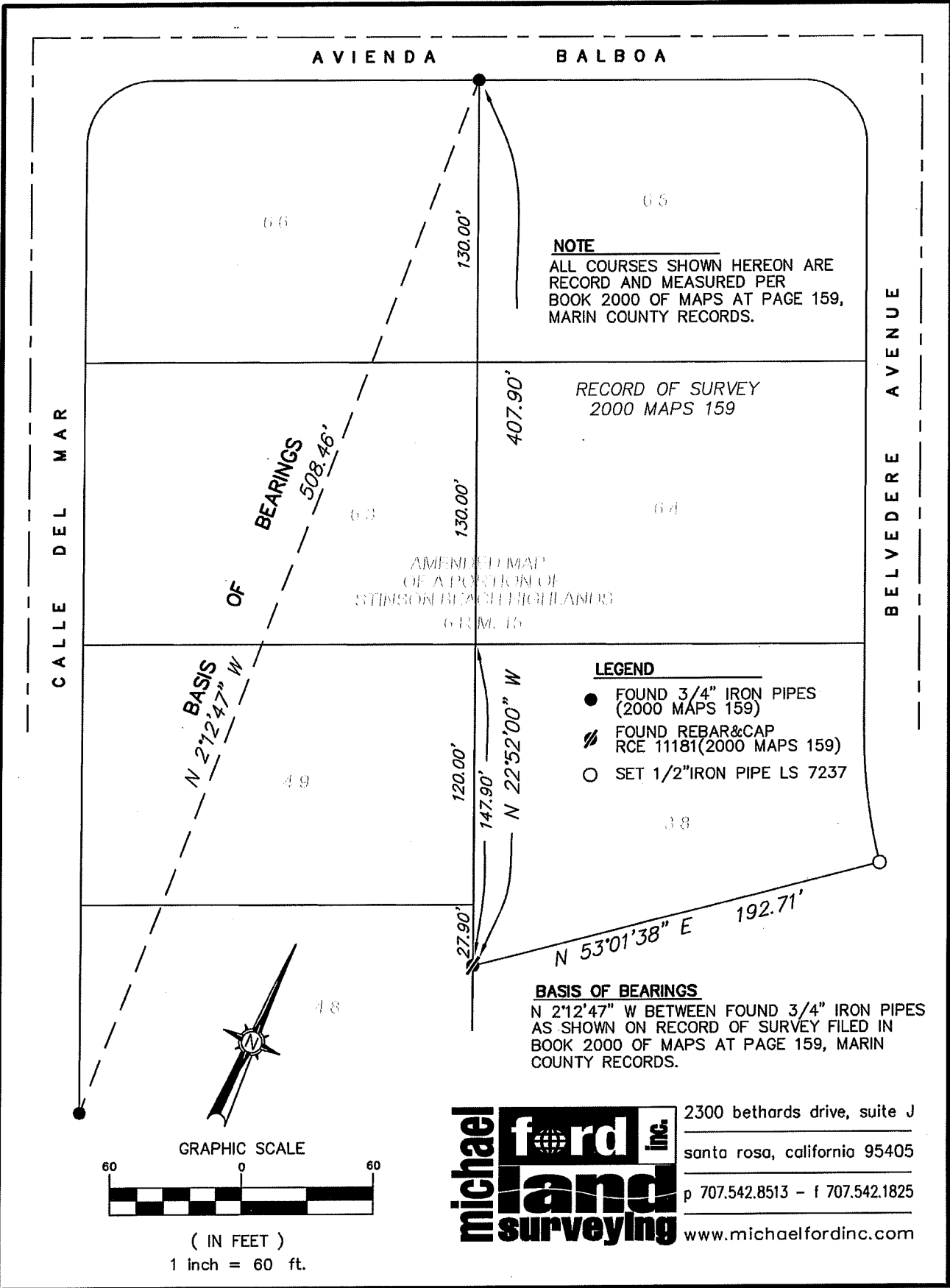
and examined and filed FEBRUARY 14, 2017

Signed T.K.P. P.L.S. or R.C.E. No. 8176

Title COUNTY SURVEYOR



County Surveyor's Comment



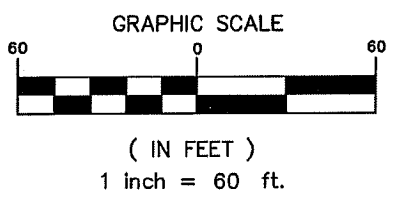
NOTE
 ALL COURSES SHOWN HEREON ARE
 RECORD AND MEASURED PER
 BOOK 2000 OF MAPS AT PAGE 159,
 MARIN COUNTY RECORDS.

RECORD OF SURVEY
 2000 MAPS 159

AMENDED MAP
 OF A PORTION OF
 STIMPSON BEACH HIGHLANDS
 G.R.M. 15

- LEGEND**
- FOUND 3/4" IRON PIPES (2000 MAPS 159)
 - ⚡ FOUND REBAR&CAP RCE 11181(2000 MAPS 159)
 - SET 1/2" IRON PIPE LS 7237

BASIS OF BEARINGS
 N 2°12'47" W BETWEEN FOUND 3/4" IRON PIPES
 AS SHOWN ON RECORD OF SURVEY FILED IN
 BOOK 2000 OF MAPS AT PAGE 159, MARIN
 COUNTY RECORDS.



2300 bethards drive, suite J
 santa rosa, california 95405
 p 707.542.8513 - f 707.542.1825
 www.michaelfordinc.com