

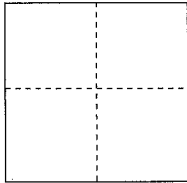
CORNER RECORD

Documented Number APN 195-104-18

City of Stinson Beach

County of Marin, California

Brief Legal Description Lot 65 Upton Tract (5 RM 61)



CORNER TYPE

Government Corner Control
Meander Property
Rancho Other

COORDINATES(Optional)

N. _____
E. _____
Zone _____ NAD27 NAD83
NAD83 Epoch _____
Elevation _____
Vert. Datum: NGVD 29 NADV88
Meas. Units: Metric Imperial

Date of Survey Oct., 2014

Corner- Left as found Found and tagged Established Reestablished Rebuilt

Identification and type of corner found: Evidence used to identify or procedure used to establish or reestablish the corner:

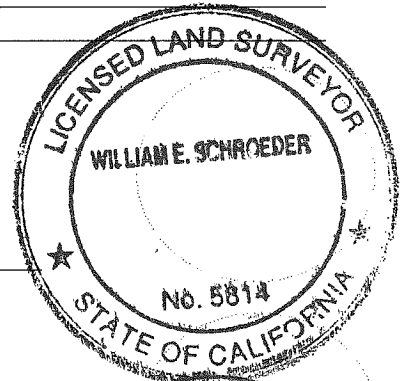
Original Monuments and Established Corners See Page 2

A description of the physical condition of the monument as found and as set or reset:
See Page 2

SURVEYOR'S STATEMENT

This Corner Record was prepared by me or under my direction in conformance with
the Land Surveyor's Act on January 2, 2015

Signed William E. Schroeder P.L.S. or R.C.E. No.: 5814



COUNTY SURVEYOR'S STATEMENT

This Corner Record was received JANUARY 27, 2015 and examined
and filed MARCH 20, 2015

Signed Richard G. Simonitch P.L.S. or R.C.E. No.: 7821

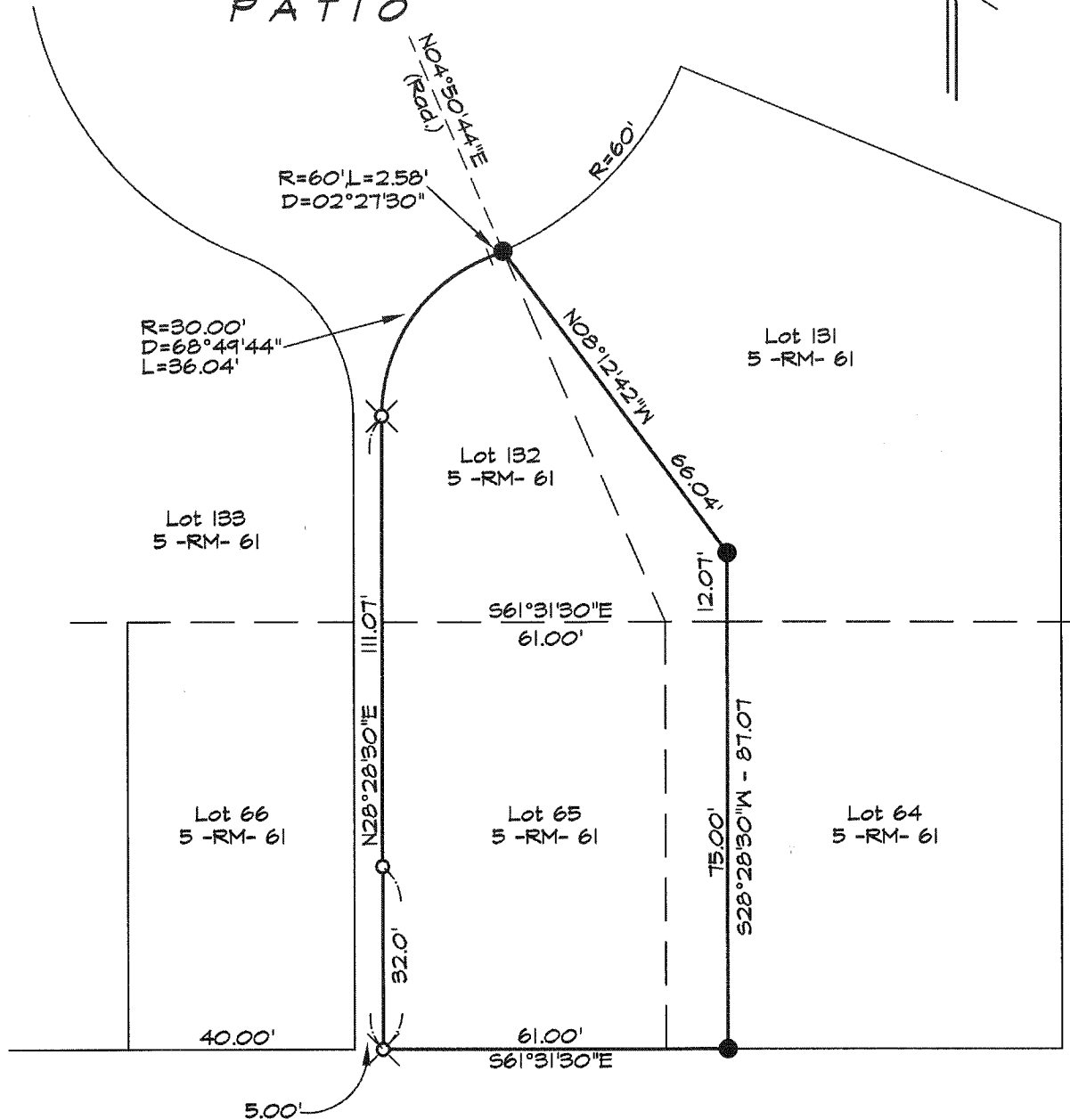
Title DEPUTY

County Surveyor's Comment _____



JOAQUIN
PATIO

SCALE: 1" = 30'



LEGEND

- = Found 1/2" Iron Pipe, LS 3890, or as noted
- ⊗ = Found 3/4" Iron Pipe with plastic cap
" LS 5814" per corner record
- = Set 3/4" Iron Pipe with plastic cap " LS 5814"

MIRA VISTA