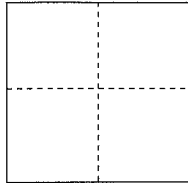


CORNER RECORD

Documented Number APN 195-104-18

City of Stinson Beach County of Marin, California

Brief Legal Description Lot 65 Upton Tract (5 RM 61)



CORNER TYPE

Government Corner Control
Meander Property
Rancho Other

COORDINATES(Optional)

N. _____
E. _____
Zone _____ NAD27 NAD83
NAD83 Epoch _____
Elevation _____
Vert. Datum: NGVD 29 NADV88
Meas. Units: Metric Imperial

Date of Survey May 09, 2014

Corner- Left as found Found and tagged Established Reestablished Rebuilt

Identification and type of corner found: Evidence used to identify or procedure used to establish or reestablish the corner:

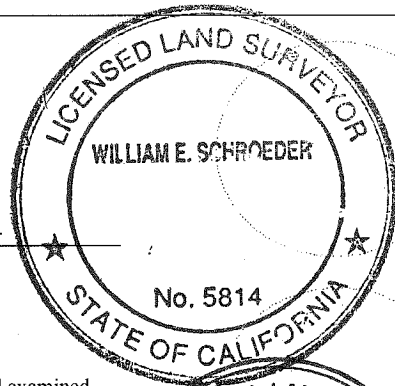
Original Monuments and Established Corners See Page 2

A description of the physical condition of the monument as found and as set or reset: See Page 2

SURVEYOR'S STATEMENT

This Corner Record was prepared by me or under my direction in conformance with the Land Surveyor's Act on May 09, 2014

Signed _____ P.L.S. or R.C.E. No.: 5814



COUNTY SURVEYOR'S STATEMENT

This Corner Record was received JUNE 16, 2014 and examined and filed JUNE 25, 2014

Signed [Signature] P.L.S. or R.C.E. No.: 7821

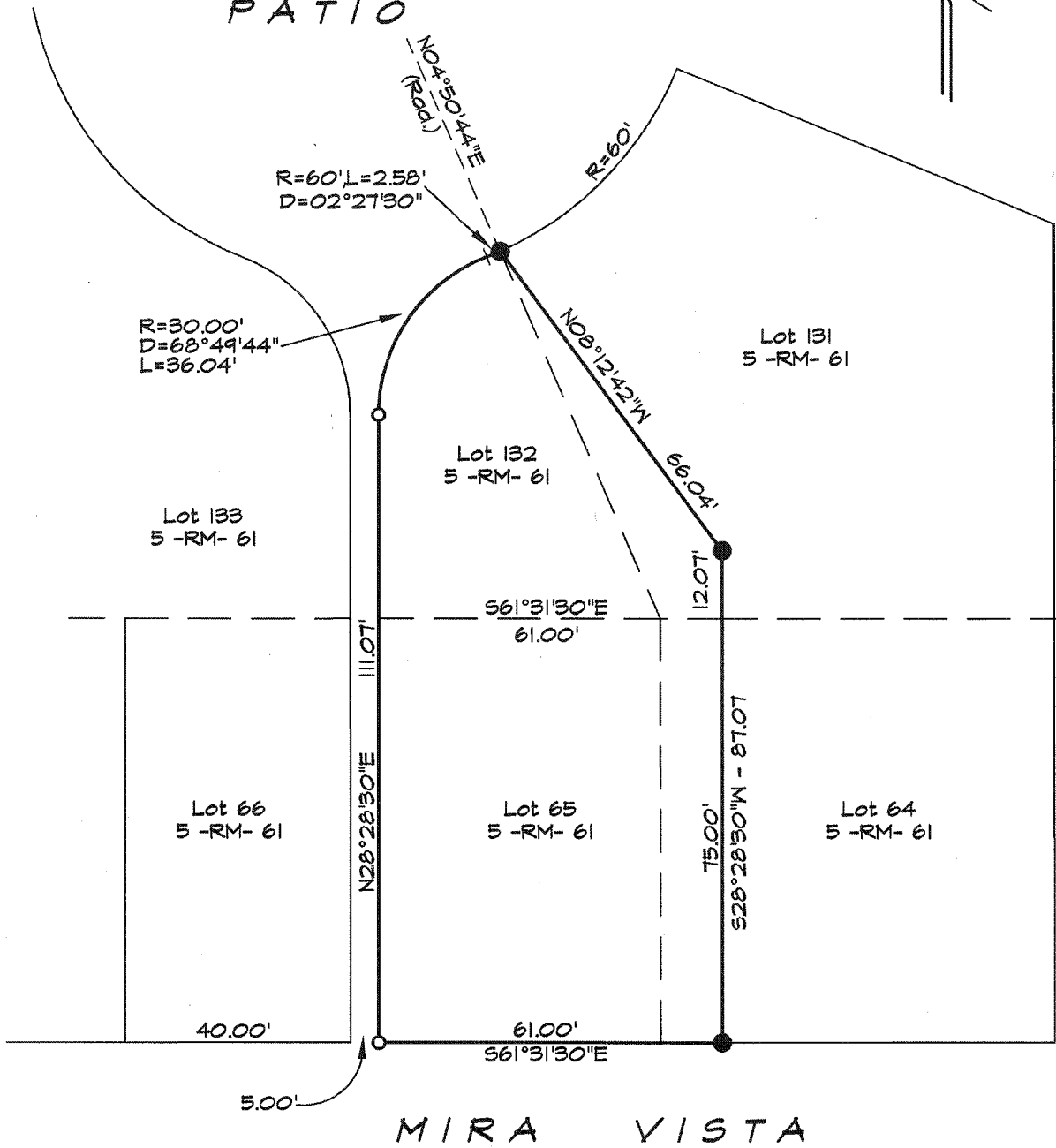


Title DEPUTY

County Surveyor's Comment _____

JOAQUIN PATIO

SCALE: 1" = 30'



LEGEND

- = Found 1/2" Iron Pipe, LS 3890, or as noted
- = Set 3/4" Iron Pipe with plastic cap "LS 5814"