

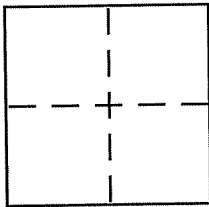
CORNER RECORD

Document Number APN 195-104-04#05

City of Stinson Beach

County of Marin, California

Brief Legal Description Lots 123 and 124, "UPTON TRACT" 5 MAPS 61, August 11, 1931



CORNER TYPE

Government Corner Control
Meander Property
Rancho Other
Date of Survey Nov. 10, 2004

COORDINATES (Optional)

N. _____
E. _____
Zone _____ NAD27 NAD83
NAD83 Epoch _____
Elev. _____
Vert. Datum: NGVD29 NAVD88
Meas. Units: Metric Imperial

Corner - Left as found Found and tagged Established Reestablished Rebuilt

Identification and type of corner found: Evidence used to identify or procedure used to establish or reestablish the corner:

Found 2" dia. iron pipes at locations shown on page 2 per map of "UPTON TRACT" filed August 11, 1931 in map book 5 at page 61, Marin County Records.

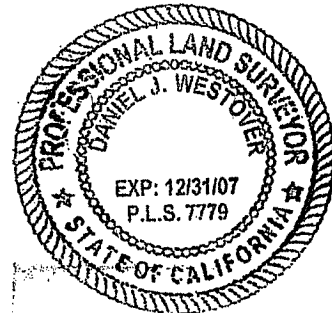
A description of the physical condition of the monument as found and as set or reset:

Set 3/8" dia. rebars with caps marked "PLS 7779" or nail with brass tag marked "PLS 7779" at locations shown on page 2.

SURVEYOR'S STATEMENT

This Corner Record was prepared by me or under my direction in conformance with the Land Surveyor's Act on Oct. 28 2006

Signed Daniel J. Westover P.L.S or R.C.E. No. 7779



COUNTY SURVEYOR'S STATEMENT

This Corner Record was received NOVEMBER 14, 2006

and examined and filed APRIL 5, 2007

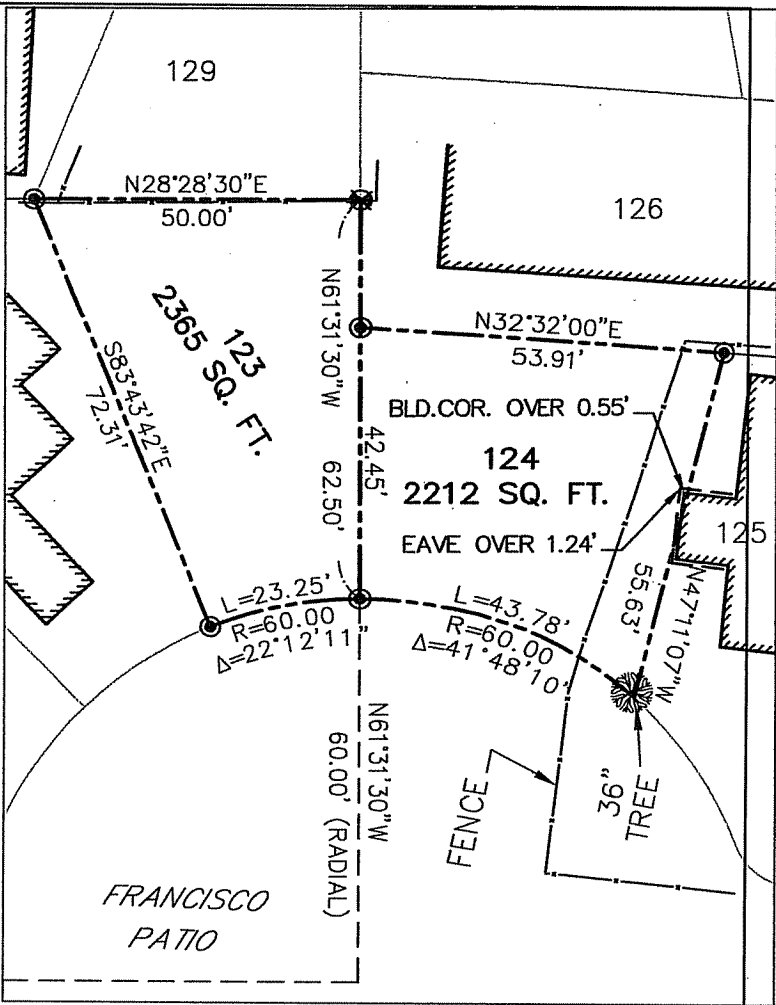
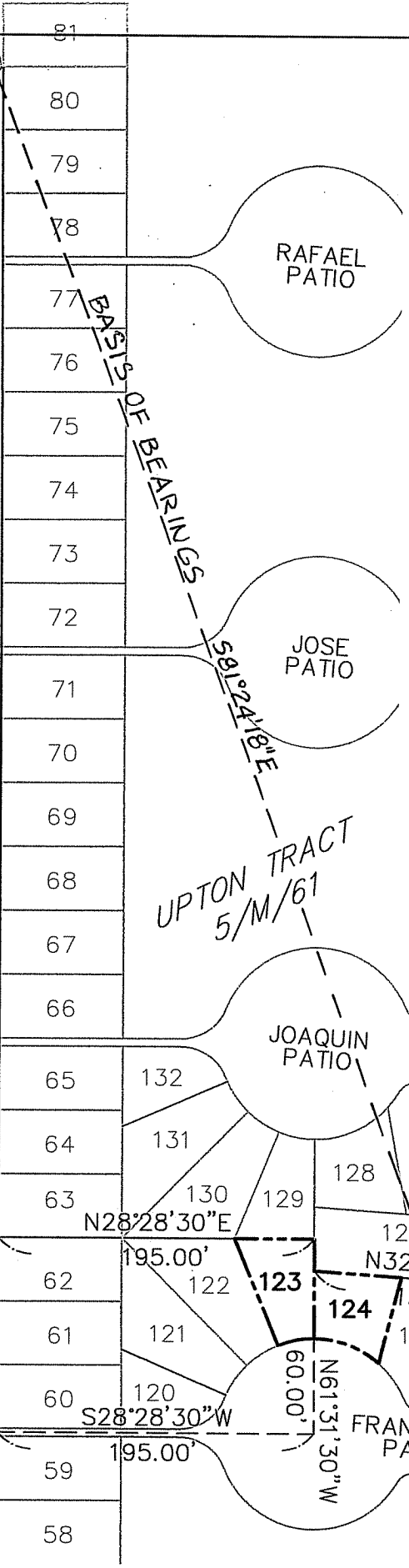
Signed _____ P.L.S or R.C.E. No. 7128

Title COUNTY SURVEYOR



County Surveyor's Comment _____

MIRA VISTA
 N 61°31'30" W 735.00'
 50'



LOT DETAIL
 SCALE: 1" = 30'

LEGEND

- FOUND 2" IRON PIPE PER 5/M/61
- ⊙ SET 5/8" REBAR WITH CAP "PLS 7779"
- ⊛ SET NAIL AND TAG "PLS 7779 IN FENCE."

