

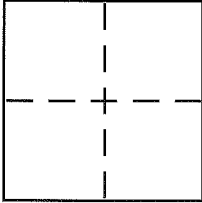
CORNER RECORD

Document Number APN 195-102-07

City of STINSON BEACH

County of MARIN, California

Brief Legal Description LOTS 66 & 133 UPTON TRACT (5RM61)



CORNER TYPE

Government Corner Control
Meander Property
Rancho Other
Date of Survey 10/10/2013

COORDINATES (Optional)

N. _____
E. _____
Zone _____ NAD27 NAD83
NAD83 Epoch _____
Elev. _____
Vert. Datum: NGVD29 NAVD88
Meas. Units: Metric Imperial

Corner - Left as found Found and tagged Established Reestablished Rebuilt

Identification and type of corner found: Evidence used to identify or procedure used to establish or reestablish the corner:

ORIGINAL MONUMENTS & ESTABLISHED CORNERS

SEE PAGE 2

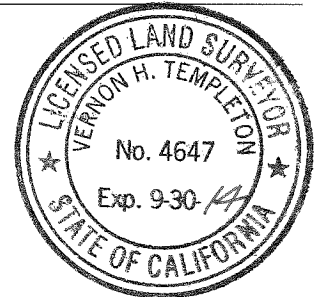
A description of the physical condition of the monument as found and as set or reset: _____

SEE PAGE 2

SURVEYOR'S STATEMENT

This Corner Record was prepared by me or under my direction in conformance with the Land Surveyor's Act on 10/11/2013

Signed Vernon H. Templeton P.L.S or R.C.E. No. 4647



COUNTY SURVEYOR'S STATEMENT

This Corner Record was received OCTOBER 25, 2013

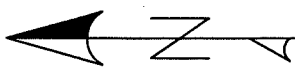
and examined and filed DECEMBER 20, 2013

Signed Richard G. Simonitch P.L.S or R.C.E. No. 7821

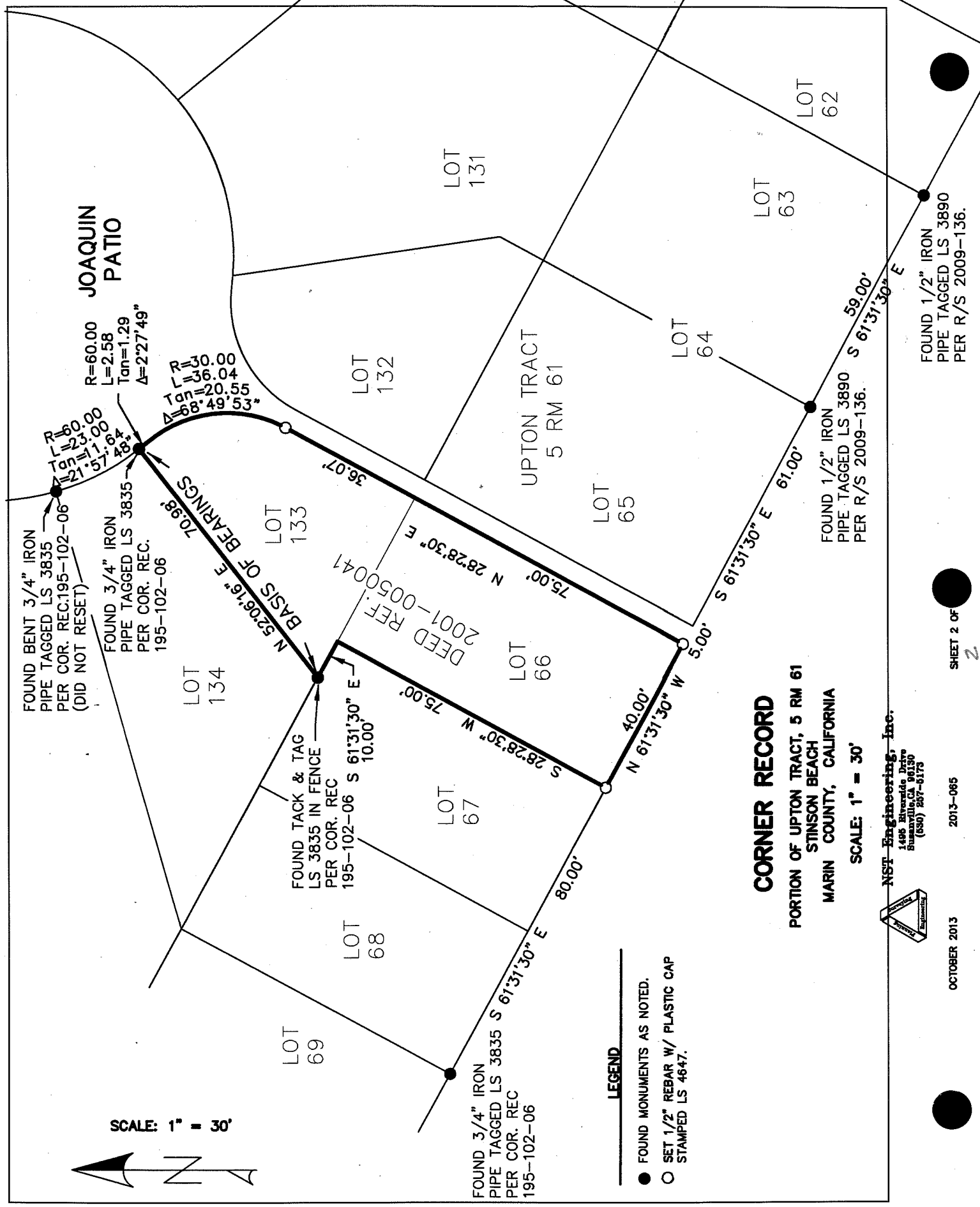
Title DEPUTY CO SURVEYOR



County Surveyor's Comment _____

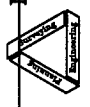


SCALE: 1" = 30'



- LEGEND**
- FOUND MONUMENTS AS NOTED.
 - SET 1/2" REBAR W/ PLASTIC CAP STAMPED LS 4647.

CORNER RECORD
 PORTION OF UPTON TRACT, 5 RM 61
 STINSON BEACH
 MARIN COUNTY, CALIFORNIA
 SCALE: 1" = 30'



NSF Engineering, Inc.
 1498 Riverside Drive
 Emeryville, CA 94630
 (510) 257-6173

OCTOBER 2013

2013-065

SHEET 2 OF 2

FOUND 1/2" IRON
 PIPE TAGGED LS 3890
 PER R/S 2009-136.

FOUND 1/2" IRON
 PIPE TAGGED LS 3890
 PER R/S 2009-136.

FOUND 3/4" IRON
 PIPE TAGGED LS 3835
 PER COR. REC
 195-102-06

FOUND TACK & TAG
 LS 3835 IN FENCE
 PER COR. REC
 195-102-06

FOUND 3/4" IRON
 PIPE TAGGED LS 3835
 PER COR. REC.
 195-102-06

FOUND BENT 3/4" IRON
 PIPE TAGGED LS 3835
 PER COR. REC. 195-102-06
 (DID NOT RESET)

JOAQUIN PATIO