

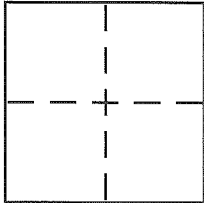
CORNER RECORD

Document Number APN 195-080-38

City of Stinson Beach

County of Marin, California

Brief Legal Description Lot 137 per 19 RM 80



CORNER TYPE

Government Corner Control
Meander Property
Rancho Other
Date of Survey _____

COORDINATES (Optional)

N. _____
E. _____
Zone _____ NAD27 NAD83
NAD83 Epoch _____
Elev. _____
Vert. Datum: NGVD29 NAVD88
Meas. Units: Metric Imperial

Corner - Left as found Found and tagged Established Reestablished Rebuilt

Identification and type of corner found: Evidence used to identify or procedure used to establish or reestablish the corner:

see sheet 2

A description of the physical condition of the monument as found and as set or reset:

see sheet 2

SURVEYOR'S STATEMENT

This Corner Record was prepared by me or under my direction in conformance with the Land Surveyor's Act on 9/16 2014

Signed [Signature] P.L.S or R.C.E. No. 6784



COUNTY SURVEYOR'S STATEMENT

This Corner Record was received 9/22/2014

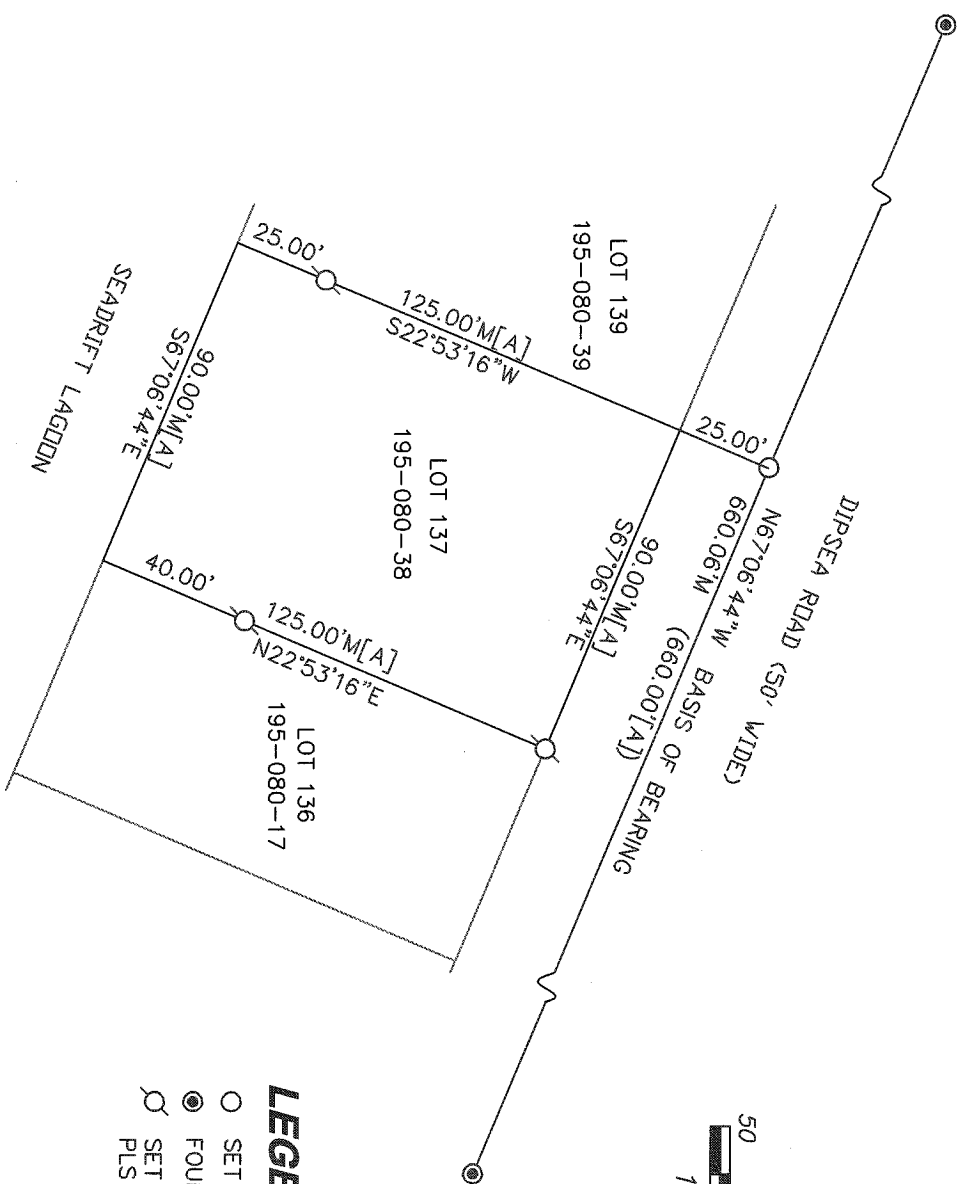
and examined and filed OCTOBER 31, 2014

Signed [Signature] P.L.S or R.C.E. No. 7821

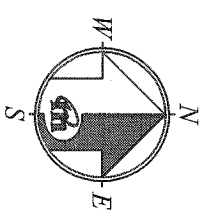
Title DEPUTY



County Surveyor's Comment _____



NOTE: RECORD=MEASURED.



REFERENCE

MAP OF RESUBDIVISION OF PORTIONS OF SEADRIFT LAGOON SUBD'S NO ONE & NO. TWO FILED FOR RECORD 80 IN VOLUME 19 OF MAPS, AT PAGE 3, MARIN COUNTY RECORDS.

LEGEND

- SET PK AND NAIL PLS 6784
- FOUND STREET MONUMENT
- SET 5/8" REBAR WITH CAP, PLS 6784

CORNER RECORD

MERIDIAN SURVEYING
ENGINEERING, INC.

2958 VAN NESS AVENUE (14176)
SAN FRANCISCO, CA 94109
(415) 440-4131 info@meridiansurvey.com

777 GRAND AVENUE, #202
SAN RAFAEL, CA 94901
(415) 456-5450