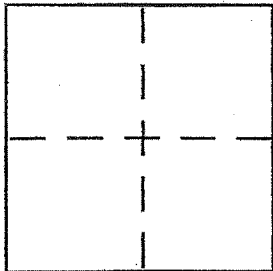


CORNER RECORD

Document Number LN. 2009-0011353

City of STINSON BEACH County of MARIN, California
Brief Legal Description LOT 87, UPTON TRACT, MARIN COUNTY CALIFORNIA, RECORDED IN BOOK 5 OF MAPS, AT PAGE 61, MARIN COUNTY RECORDS



CORNER TYPE
Government Corner Control
Meander Property
Rancho Other
Date of Survey 25 JULY 2011

COORDINATES (Optional)
N. _____
E. _____
Zone NAD27 NAD83
NAD83 Epoch _____
Elev. _____
Vert. Datum: NGVD29 NAVD88
Meas. Units: Metric Imperial

Corner - Left as found Found & tagged Established Reestablished Rebuilt

Identification and type of corner found: Evidence used to identify or procedure used to establish or reestablish corner:
FOUND 3/4" IRON PIPES WITH PLASTIC PLUG "DANSKIN PLS 4794" PER BOOK 2006 OF MAPS, AT PAGE 78, MARIN COUNTY RECORDS, AS SHOWN UPON REVERSE SIDE.

A description of the physical condition of the monument as found and as set or reset: _____
AS SHOW UPON REVERSE SIDE.

SURVEYOR'S STATEMENT

This Corner Record was prepared by me or under my direction in conformance with the Land Surveyor's Act on 25 JULY 2011.

Signed [Signature] P.L.S. No. 4794



COUNTY SURVEYOR'S STATEMENT

This Corner Record was received AUGUST 3, 2011
and examined and filed AUGUST 16, 2011

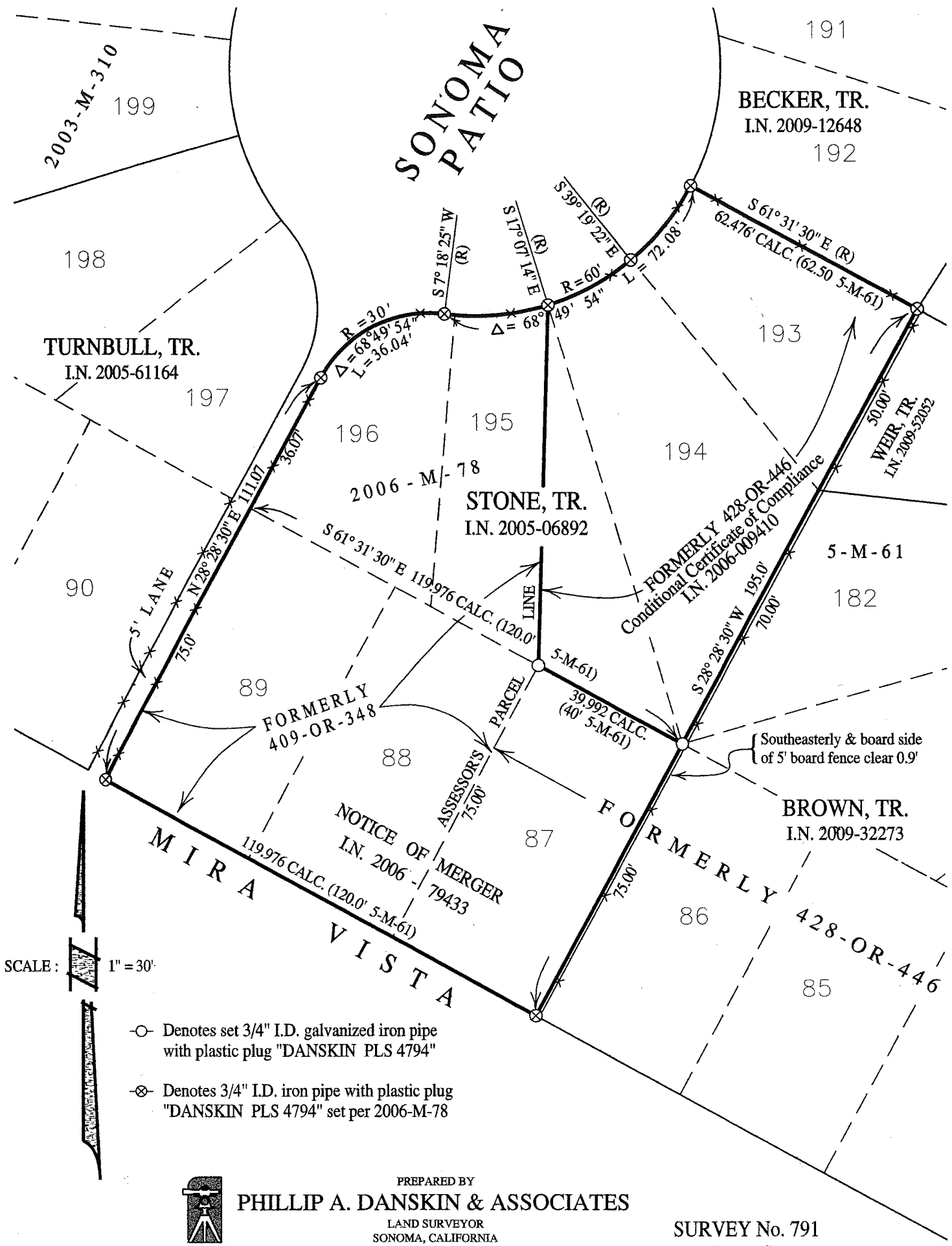
Signed [Signature] P.L.S. or R.C.E. No. 7128

Title COUNTY SURVEYOR



County Surveyor's Comment _____

SONOMA PATIO



TURNBULL, TR.
I.N. 2005-61164

STONE, TR.
I.N. 2005-06892

BECKER, TR.
I.N. 2009-12648

WEIR, TR.
I.N. 2009-52052

BROWN, TR.
I.N. 2009-32273

SCALE: 1" = 30'

- Denotes set 3/4" I.D. galvanized iron pipe with plastic plug "DANSKIN PLS 4794"
- ⊗ Denotes 3/4" I.D. iron pipe with plastic plug "DANSKIN PLS 4794" set per 2006-M-78



PREPARED BY
PHILLIP A. DANSKIN & ASSOCIATES

LAND SURVEYOR
SONOMA, CALIFORNIA
PHONE: (707) 938-2520

SURVEY No. 791
For: Susan Stone