



**JERRICO ASSOCIATES**  
 SUITE 27  
 77 MARK DRIVE  
 SAN RAFAEL, CA 94903

195-062-07

6769

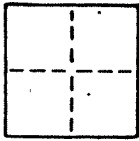
**CORNER RECORD**

1/4

COUNTY OF Marin T. \_\_\_\_\_ R. \_\_\_\_\_ MERIDIAN CALIFORNIA

CORNER TYPE: GOVT. CORNER  MEANDER  RANCHO  CONTROL  OTHER

CORNER IDENTIFICATION — DATE OF VISIT \_\_\_\_\_ 19\_\_\_\_



CORNER — LEFT AS FOUND  FOUND AND TAGGED  REESTABLISHED OBLITERATED CORNER  REBUILT

PHYSICAL DESCRIPTION OF CORNER FOUND; EVIDENCE AND METHOD USED TO IDENTIFY OR REESTABLISH

**Lots 90,91,92,197 and 198 Upton Tract, 5 R.M. 61**

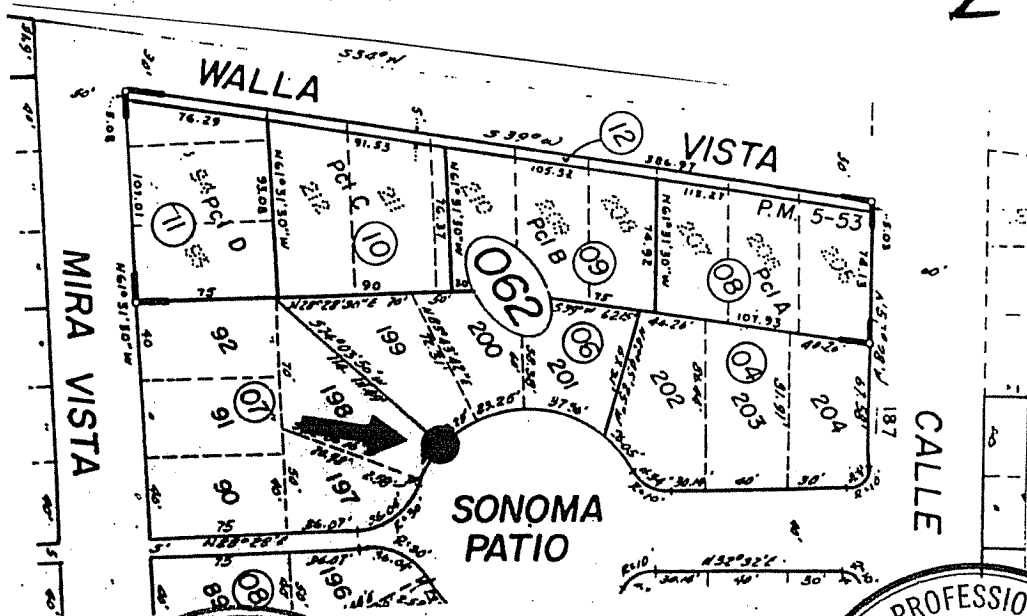
PHYSICAL DESCRIPTION OF MONUMENTS REBUILT OR PERPETUATED

Found points as shown. ● Found pipe and L.S. 2738 ■ Found hub no tag.

● Set rebar and cap L.S. 3887

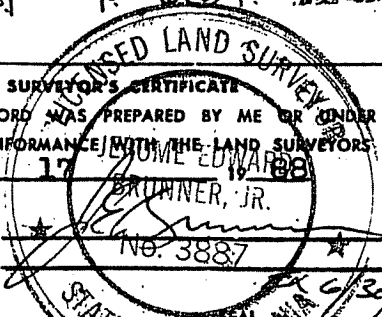
CALIFORNIA COORDINATE SYSTEM ORDER: FIRST  SECOND  THIRD   
 STATIONS USED: NGS (USC & GS)  STATE  COUNTY  OTHER  STATION \_\_\_\_\_ STATION \_\_\_\_\_  
 ZONE \_\_\_\_\_ ELEVATION \_\_\_\_\_ NORTHINGS (Y) \_\_\_\_\_ EASTINGS (X) \_\_\_\_\_

SKETCH: (Include reference tie or witness points, remarks and topo of area)



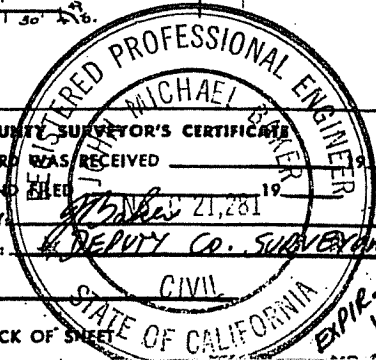
**SURVEYOR'S CERTIFICATE**  
 THIS CORNER RECORD WAS PREPARED BY ME OR UNDER MY DIRECTION IN CONFORMANCE WITH THE LAND SURVEYORS ACT ON August 17 1988

SIGNED: [Signature]  
 L.S. or R.C.E. No. No. 3887



**COUNTY SURVEYOR'S CERTIFICATE**  
 THE CORNER RECORD WAS RECEIVED \_\_\_\_\_ AND EXAMINED AND FILED \_\_\_\_\_ 19\_\_\_\_  
 BY: [Signature] 21,281  
 TITLE: DEPUTY CO. SURVEYOR

DOCUMENT No. \_\_\_\_\_  
 STATEMENT ON BACK OF SHEET





**JERRICO ASSOCIATES**  
 SUITE 27  
 77 MARK DRIVE  
 SAN RAFAEL, CA 94903

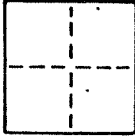
195-062-07

6769

**CORNER RECORD**

2/4

COUNTY OF Marin T. \_\_\_\_\_ R. \_\_\_\_\_ MERIDIAN \_\_\_\_\_ CALIFORNIA  
 CORNER TYPE: GOVT. CORNER  MEANDER  RANCHO  CONTROL  OTHER   
 CORNER IDENTIFICATION — DATE OF VISIT \_\_\_\_\_ 19\_\_\_\_



CORNER — LEFT AS FOUND  FOUND AND TAGGED  REESTABLISHED OBLITERATED CORNER  REBUILT

PHYSICAL DESCRIPTION OF CORNER FOUND; EVIDENCE AND METHOD USED TO IDENTIFY OR REESTABLISH

Lots 90,91,92,197 and 198 Upton Tract, 5 R.M. 61

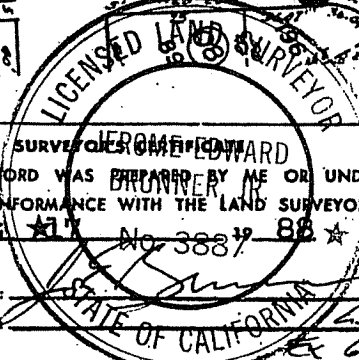
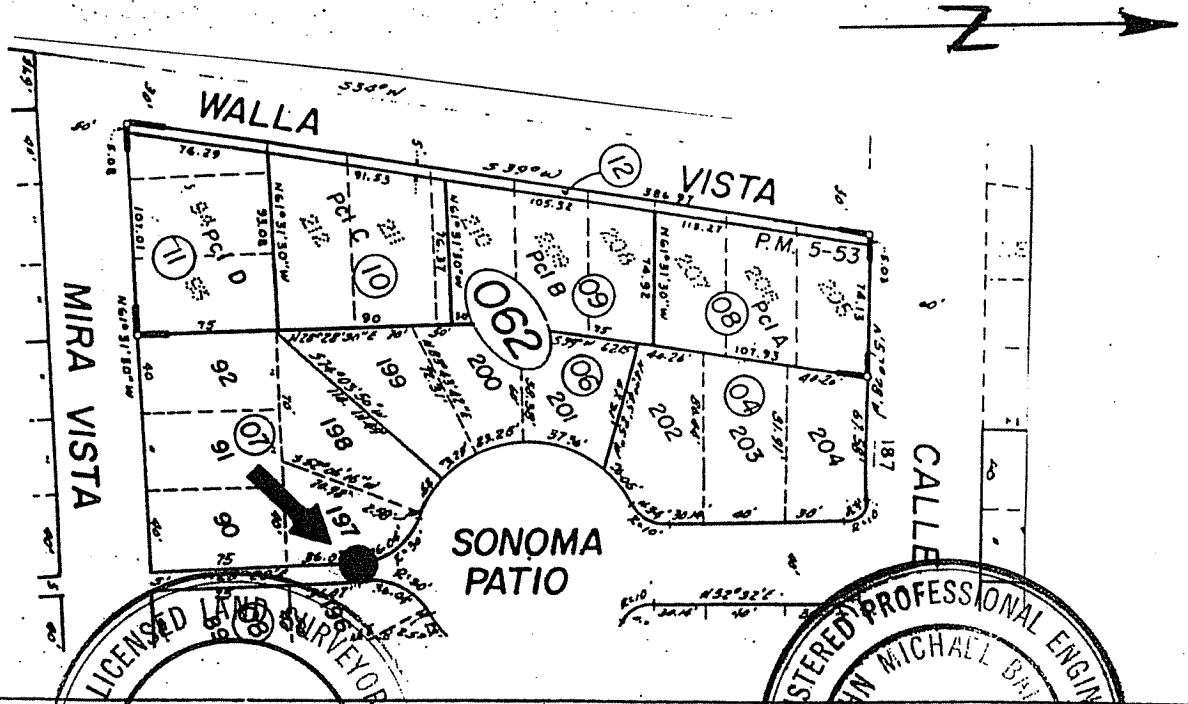
PHYSICAL DESCRIPTION OF MONUMENTS REBUILT OR PERPETUATED

Found points as shown. ● Found pipe and L.S. 2738 ■ Found hub no tag.

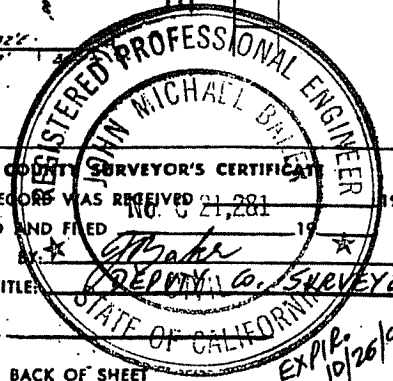
● Set rebar and cap L.S. 3887

CALIFORNIA COORDINATE SYSTEM ORDER: FIRST  SECOND  THIRD   
 STATIONS USED: NGS (USC & GS)  STATE  COUNTY  OTHER  STATION \_\_\_\_\_ STATION \_\_\_\_\_  
 ZONE \_\_\_\_\_ ELEVATION \_\_\_\_\_ NORTHINGS (Y) \_\_\_\_\_ EASTINGS (X) \_\_\_\_\_

SKETCH: (Include reference tie or witness points, remarks and topo of area)



SURVEYED BY EDWARD BRUNNER  
 THIS CORNER RECORD WAS PREPARED BY ME OR UNDER MY DIRECTION IN CONFORMANCE WITH THE LAND SURVEYORS ACT ON August 17 1988 No. 3887  
 SIGNED: \_\_\_\_\_  
 L.S. or R.C.E. No. 45387  
6/50/92



REGISTERED PROFESSIONAL ENGINEER  
 JOHN MICHAEL BAKER  
 THE CORNER RECORD WAS RECEIVED AND EXAMINED AND FILED ON NOV 21 1988  
 BY John Baker  
 TITLE: DEPUTY COUNTY SURVEYOR  
 STATE OF CALIFORNIA  
 DOCUMENT No. \_\_\_\_\_  
 STATEMENT ON BACK OF SHEET  
 EXPIRE 10/26/90



**JERRICO ASSOCIATES**  
 SUITE 27  
 77 MARK DRIVE  
 SAN RAFAEL, CA 94903

195-062-07

6769

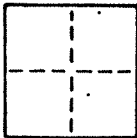
**CORNER RECORD**

3/4

COUNTY OF Marin T. \_\_\_\_\_ R. \_\_\_\_\_ MERIDIAN \_\_\_\_\_ CALIFORNIA

CORNER TYPE: GOVT. CORNER  MEANDER  RANCHO  CONTROL  OTHER

CORNER IDENTIFICATION — DATE OF VISIT \_\_\_\_\_ 19\_\_\_\_



CORNER — LEFT AS FOUND  FOUND AND TAGGED  REESTABLISHED OBLITERATED CORNER  REBUILT

PHYSICAL DESCRIPTION OF CORNER FOUND; EVIDENCE AND METHOD USED TO IDENTIFY OR REESTABLISH

**Lots 90,91,92,197 and 198 Upton Tract, 5 R.M. 61**

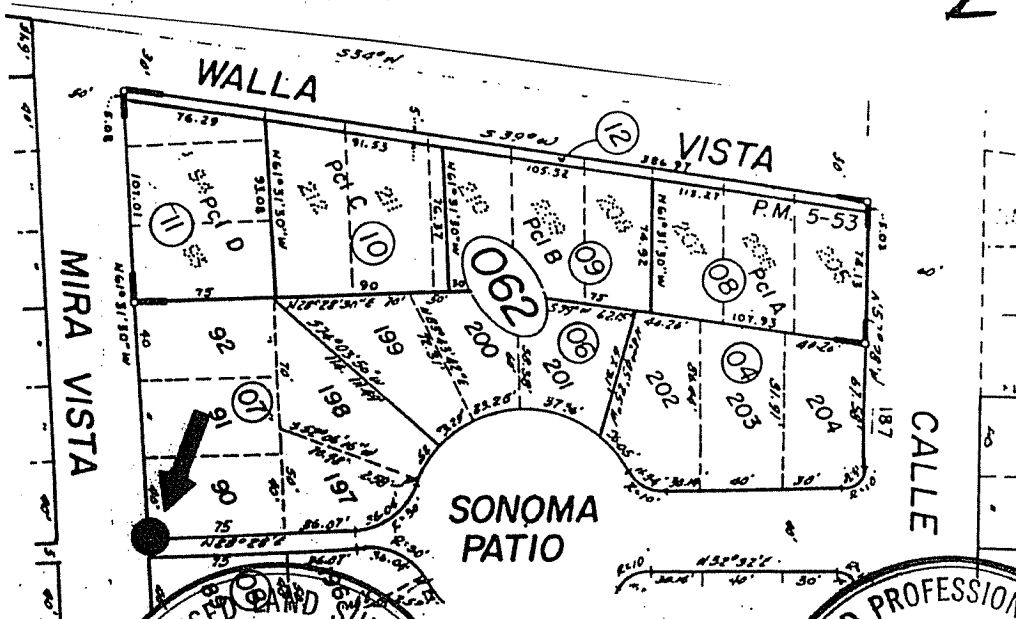
PHYSICAL DESCRIPTION OF MONUMENTS REBUILT OR PERPETUATED

**Found points as shown. • Found pipe and L.S. 2738 ■ Found hub no tag.**

● **Set rebar and cap L.S. 3887**

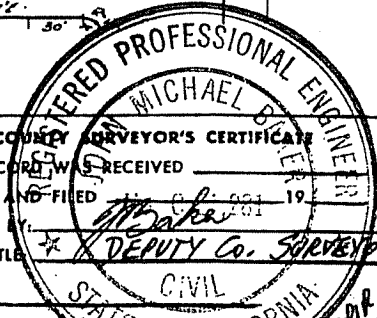
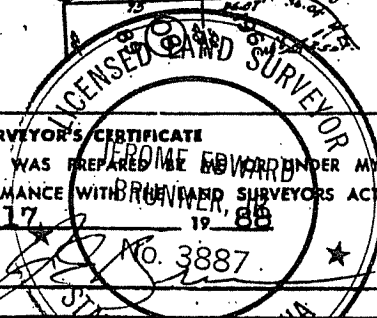
CALIFORNIA COORDINATE SYSTEM ORDER: FIRST  SECOND  THIRD   
 STATIONS USED: NGS (USC & GS)  STATE  COUNTY  OTHER  STATION \_\_\_\_\_ STATION \_\_\_\_\_  
 ZONE \_\_\_\_\_ ELEVATION \_\_\_\_\_ NORTHINGS (Y) \_\_\_\_\_ EASTINGS (X) \_\_\_\_\_

SKETCH: (Include reference tie or witness points, remarks and topo of area)



**SURVEYOR'S CERTIFICATE**  
 THIS CORNER RECORD WAS PREPARED AND FORWARDED UNDER MY DIRECTION IN CONFORMANCE WITH BRUNNER AND SURVEYORS ACT ON August 17, 1988  
 SIGNED: \_\_\_\_\_  
 L.S. or R.C.E. No. No. 3887

**COUNTY SURVEYOR'S CERTIFICATE**  
 THE CORNER RECORD WAS RECEIVED \_\_\_\_\_ AND EXAMINED AND FILED \_\_\_\_\_ 19\_\_\_\_  
 TITLE: DEPUTY Co. SURVEYOR  
 DOCUMENT No. \_\_\_\_\_  
 STATEMENT ON BACK OF SHEET





**JERRICO ASSOCIATES**  
 SUITE 27  
 77 MARK DRIVE  
 SAN RAFAEL, CA 94903

195-062-07

6769

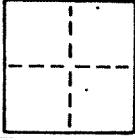
**CORNER RECORD**

4/4

COUNTY OF Marin T. \_\_\_\_\_ R. \_\_\_\_\_ MERIDIAN \_\_\_\_\_ CALIFORNIA

CORNER TYPE: GOV'T. CORNER  MEANDER  RANCHO  CONTROL  OTHER

CORNER IDENTIFICATION — DATE OF VISIT \_\_\_\_\_ 19\_\_\_\_



CORNER — LEFT AS FOUND  FOUND AND TAGGED  REESTABLISHED OBLITERATED CORNER  REBUILT

PHYSICAL DESCRIPTION OF CORNER FOUND; EVIDENCE AND METHOD USED TO IDENTIFY OR REESTABLISH

Lots 90,91,92,197 and 198 Upton Tract, 5 R.M. 61

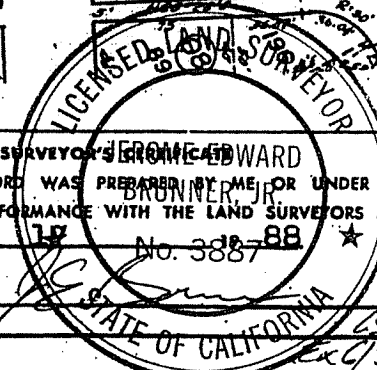
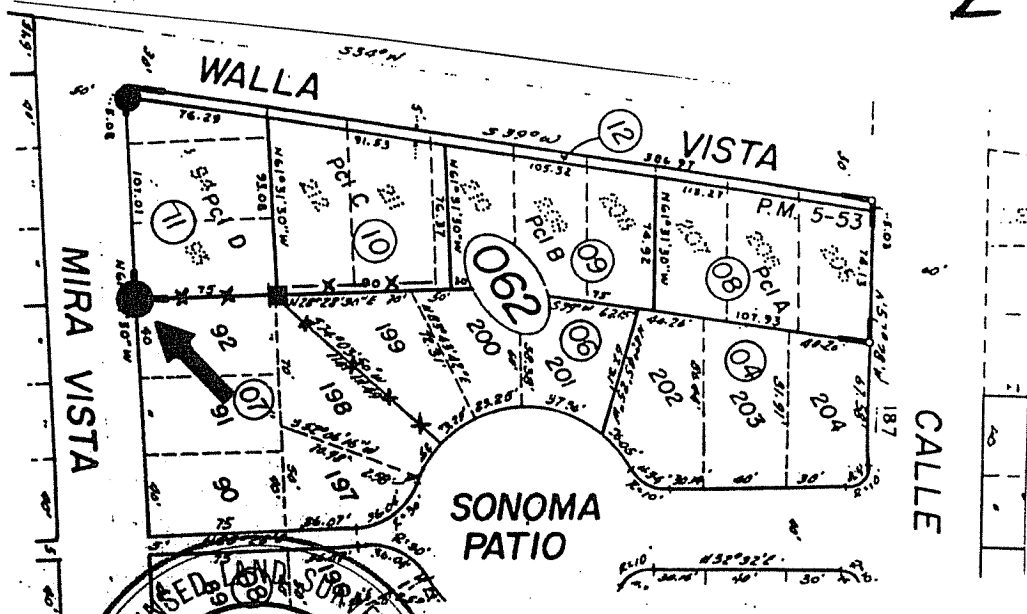
PHYSICAL DESCRIPTION OF MONUMENTS REBUILT OR PERPETUATED

Found points as shown. ● Found pipe and L.S. 2738 ■ Found hub no tag.

● Set rebar and cap L.S. 3887 under rail fence line.

CALIFORNIA COORDINATE SYSTEM ORDER: FIRST  SECOND  THIRD   
 STATIONS USED: NGS (USC & GS)  STATE  COUNTY  OTHER  STATION \_\_\_\_\_ STATION \_\_\_\_\_  
 ZONE \_\_\_\_\_ ELEVATION \_\_\_\_\_ NORTHINGS (Y) \_\_\_\_\_ EASTINGS (X) \_\_\_\_\_

SKETCH: (Include reference tie or witness points, remarks and topo of area)



THIS CORNER RECORD WAS PREPARED BY ME OR UNDER MY DIRECTION IN CONFORMANCE WITH THE LAND SURVEYORS ACT ON August 17 1988 No. 3887

SIGNED: \_\_\_\_\_  
 L.S. or R.C.E. No. 65288  
ex 6/30/92

**COUNTY SURVEYOR'S CERTIFICATE**

THE CORNER RECORD WAS RECEIVED \_\_\_\_\_ 19\_\_\_\_  
 AND EXAMINED AND FILED \_\_\_\_\_ 19\_\_\_\_  
 BY: \_\_\_\_\_  
 TITLE: \_\_\_\_\_

DOCUMENT No. \_\_\_\_\_

STATEMENT ON BACK OF SHEET