



**JERRICO ASSOCIATES**  
 SUITE 27  
 77 MARK DRIVE  
 SAN RAFAEL, CA 94903

195-062-07

6769

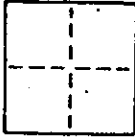
**CORNER RECORD**

1/4

COUNTY OF Marin T. \_\_\_\_\_ R. \_\_\_\_\_ MERIDIAN \_\_\_\_\_ CALIFORNIA

CORNER TYPE: GOV'T. CORNER  MEANDER  RANCHO  CONTROL  OTHER

CORNER IDENTIFICATION — DATE OF VISIT \_\_\_\_\_ 19\_\_\_\_



CORNER — LEFT AS FOUND  FOUND AND TAGGED  REESTABLISHED OBLITERATED CORNER  REBUILT

PHYSICAL DESCRIPTION OF CORNER FOUND; EVIDENCE AND METHOD USED TO IDENTIFY OR REESTABLISH

**Lots 90,91,92,197 and 198 Upton Tract, 5 R.M. 61**

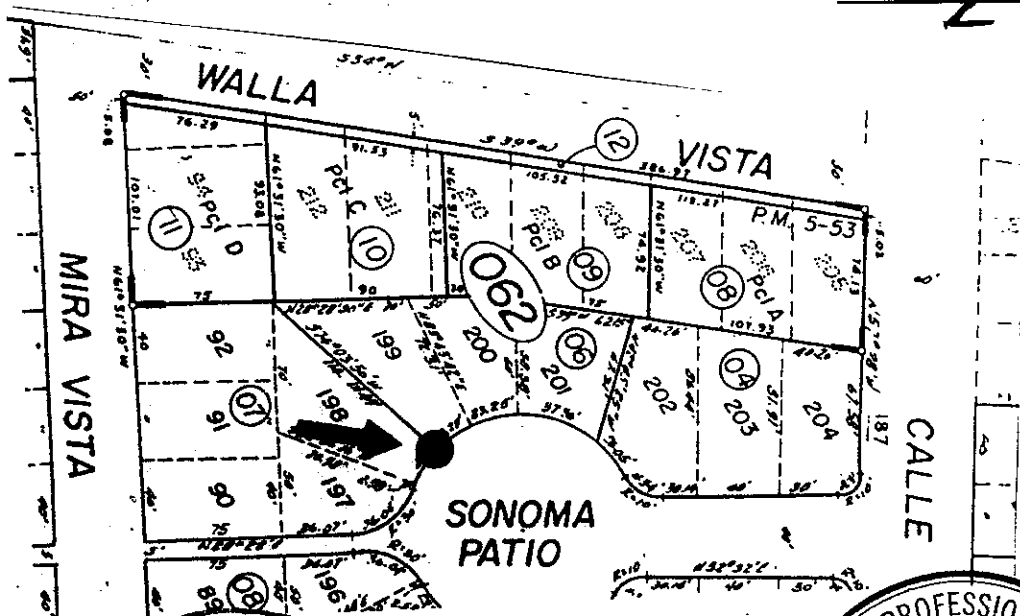
PHYSICAL DESCRIPTION OF MONUMENTS REBUILT OR PERPETUATED

Found points as shown. ● Found pipe and L.S. 2738 ■ Found hub no tag.

● Set rebar and cap L.S. 3887

CALIFORNIA COORDINATE SYSTEM ORDER: FIRST  SECOND  THIRD   
 STATIONS USED: NGS (USC & GS)  STATE  COUNTY  OTHER  STATION \_\_\_\_\_ STATION \_\_\_\_\_  
 ZONE \_\_\_\_\_ ELEVATION \_\_\_\_\_ NORTHINGS (Y) \_\_\_\_\_ EASTINGS (X) \_\_\_\_\_

SKETCH: (Include reference tie or witness points, remarks and topo of area)

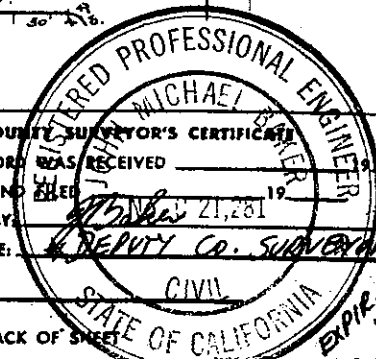
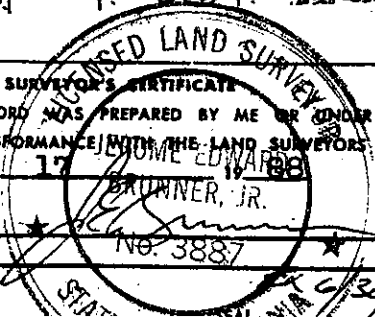


SURVEYOR'S CERTIFICATE  
 THIS CORNER RECORD WAS PREPARED BY ME OR UNDER MY DIRECTION IN CONFORMANCE WITH THE LAND SURVEYORS ACT ON August 17 1988

SIGNED: EDWARD BRUNNER, JR.  
 L.S. or R.C.E. No. No. 3887

COUNTY SURVEYOR'S CERTIFICATE  
 THE CORNER RECORD WAS RECEIVED AND EXAMINED AND FILED BY Michael 21,281 1988

TITLE: DEPUTY Co. Surveyor  
 DOCUMENT No. \_\_\_\_\_  
 STATE OF CALIFORNIA





**JERRICO ASSOCIATES**  
 SUITE 27  
 77 MARK DRIVE  
 SAN RAFAEL, CA 94903

195-062-07

6769

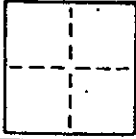
**CORNER RECORD**

2/4

COUNTY OF Marin T. \_\_\_\_\_ R. \_\_\_\_\_ MERIDIAN \_\_\_\_\_ CALIFORNIA

CORNER TYPE: GOV'T. CORNER  MEANDER  RANCHO  CONTROL  OTHER

CORNER IDENTIFICATION — DATE OF VISIT \_\_\_\_\_ 19\_\_\_\_



CORNER — LEFT AS FOUND  FOUND AND TAGGED  REESTABLISHED OBLITERATED CORNER  REBUILT

PHYSICAL DESCRIPTION OF CORNER FOUND; EVIDENCE AND METHOD USED TO IDENTIFY OR REESTABLISH

Lots 90,91,92,197 and 198 Upton Tract, 5 R.M. 61

PHYSICAL DESCRIPTION OF MONUMENTS REBUILT OR PERPETUATED

Found points as shown. ● Found pipe and L.S. 2738 ■ Found hub no tag.

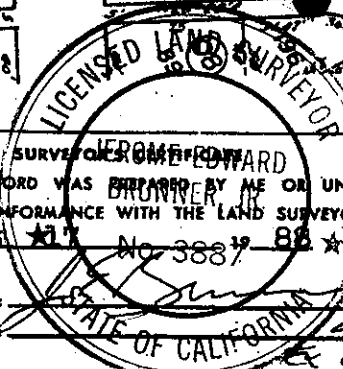
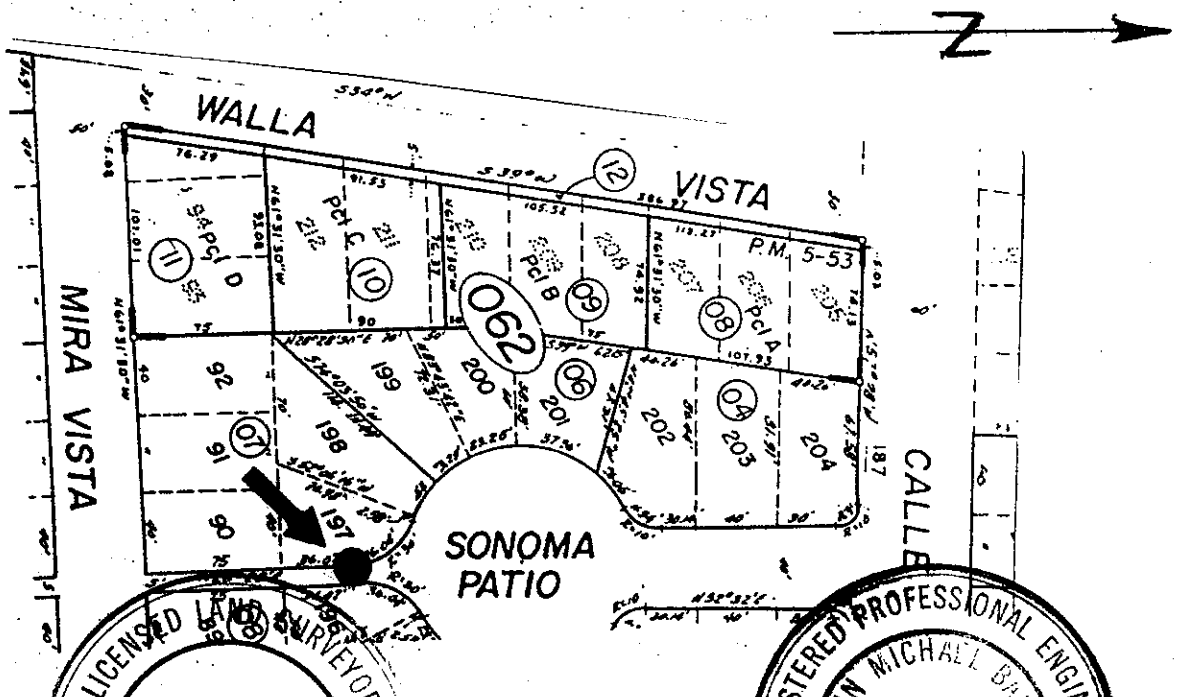
● Set rebar and cap L.S. 3887

CALIFORNIA COORDINATE SYSTEM ORDER: FIRST  SECOND  THIRD

STATIONS USED: NGS (USC & GS)  STATE  COUNTY  OTHER  STATION \_\_\_\_\_ STATION \_\_\_\_\_

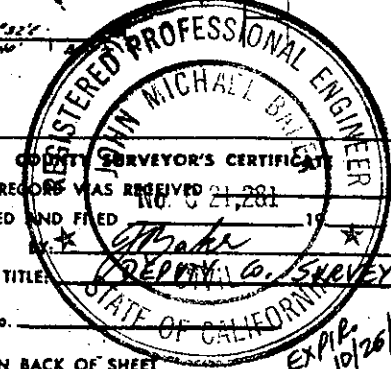
ZONE \_\_\_\_\_ ELEVATION \_\_\_\_\_ NORTHINGS (Y) \_\_\_\_\_ EASTINGS (X) \_\_\_\_\_

SKETCH: (Include reference tie or witness points, remarks and topo of area)



THIS CORNER RECORD WAS PREPARED BY ME OR UNDER MY DIRECTION IN CONFORMANCE WITH THE LAND SURVEYORS ACT ON August 11, 1988 No. 3887

SIGNED: \_\_\_\_\_ L.S. or R.C.E. No. \_\_\_\_\_



THE CORNER RECORD WAS RECEIVED AND EXAMINED AND FILED IN \_\_\_\_\_ 19\_\_\_\_

TITLE: REPTON CO. SURVEYOR DOCUMENT No. \_\_\_\_\_ STATEMENT ON BACK OF SHEET

EXPIRES 10/26/90



JERRICO ASSOCIATES  
 SUITE 27  
 77 MARK DRIVE  
 SAN RAFAEL, CA 94903

195-062-07

6769

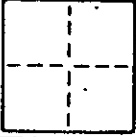
**CORNER RECORD**

3/4

COUNTY OF Marin T. \_\_\_\_\_ R. \_\_\_\_\_ MERIDIAN \_\_\_\_\_ CALIFORNIA

CORNER TYPE: GOVT. CORNER  MEANDER  RANCHO  CONTROL  OTHER

CORNER IDENTIFICATION — DATE OF VISIT \_\_\_\_\_ 19\_\_\_\_



CORNER — LEFT AS FOUND  FOUND AND TAGGED  REESTABLISHED OBLITERATED CORNER  REBUILT

PHYSICAL DESCRIPTION OF CORNER FOUND; EVIDENCE AND METHOD USED TO IDENTIFY OR REESTABLISH

Lots 90,91,92,197 and 198 Upton Tract, 5 R.M. 61

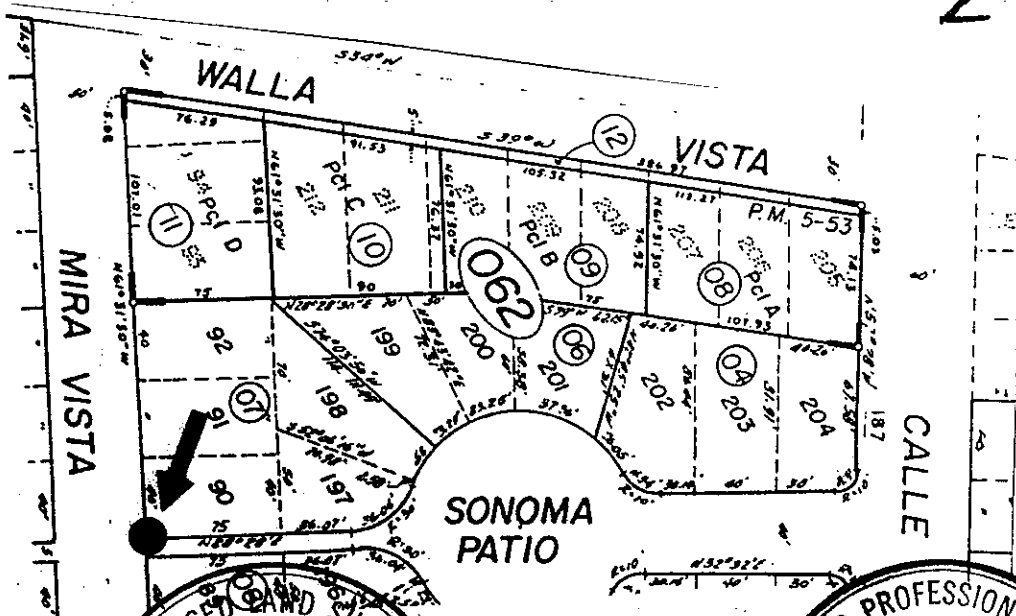
PHYSICAL DESCRIPTION OF MONUMENTS REBUILT OR PERPETUATED

Found points as shown. ● Found pipe and L.S. 2738 ■ Found hub no tag.

● Set rebar and cap L.S. 3887

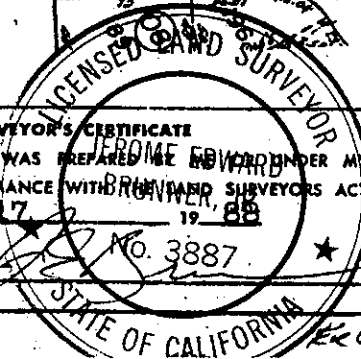
CALIFORNIA COORDINATE SYSTEM ORDER: FIRST  SECOND  THIRD   
 STATIONS USED: NGS (USC & GS)  STATE  COUNTY  OTHER  STATION \_\_\_\_\_ STATION \_\_\_\_\_  
 ZONE \_\_\_\_\_ ELEVATION \_\_\_\_\_ NORTHINGS (Y) \_\_\_\_\_ EASTINGS (X) \_\_\_\_\_

SKETCH: (Include reference tie or witness points, remarks and topo of area)



SURVEYOR'S CERTIFICATE  
 THIS CORNER RECORD WAS PREPARED BY ME OR UNDER MY  
 DIRECTION IN CONFORMANCE WITH THE SURVEYORS ACT  
 ON August 17, 1988

SIGNED: \_\_\_\_\_  
 L.S. or R.C.E. No. \_\_\_\_\_

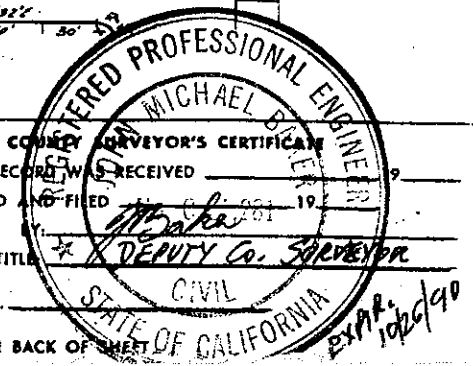


CORNER SURVEYOR'S CERTIFICATE  
 RECEIVED \_\_\_\_\_  
 AND EXAMINED AND FILED \_\_\_\_\_

TITLE: Deputy Co. Surveyor

DOCUMENT No. \_\_\_\_\_

STATEMENT ON BACK OF SHEET





JERRICO ASSOCIATES  
 SUITE 27  
 77 MARK DRIVE  
 SAN RAFAEL, CA 94903

195-062-07

6769

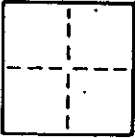
**CORNER RECORD**

4/4

COUNTY OF Marin T. \_\_\_\_\_ R. \_\_\_\_\_ MERIDIAN \_\_\_\_\_ CALIFORNIA

CORNER TYPE: GOVT. CORNER  MEANDER  RANCHO  CONTROL  OTHER

CORNER IDENTIFICATION — DATE OF VISIT \_\_\_\_\_ 19\_\_\_\_



CORNER — LEFT AS FOUND  FOUND AND TAGGED  REESTABLISHED OBLITERATED CORNER  REBUILT

PHYSICAL DESCRIPTION OF CORNER FOUND; EVIDENCE AND METHOD USED TO IDENTIFY OR REESTABLISH

Lots 90,91,92,197 and 198 Upton Tract, 5 R.M. 61

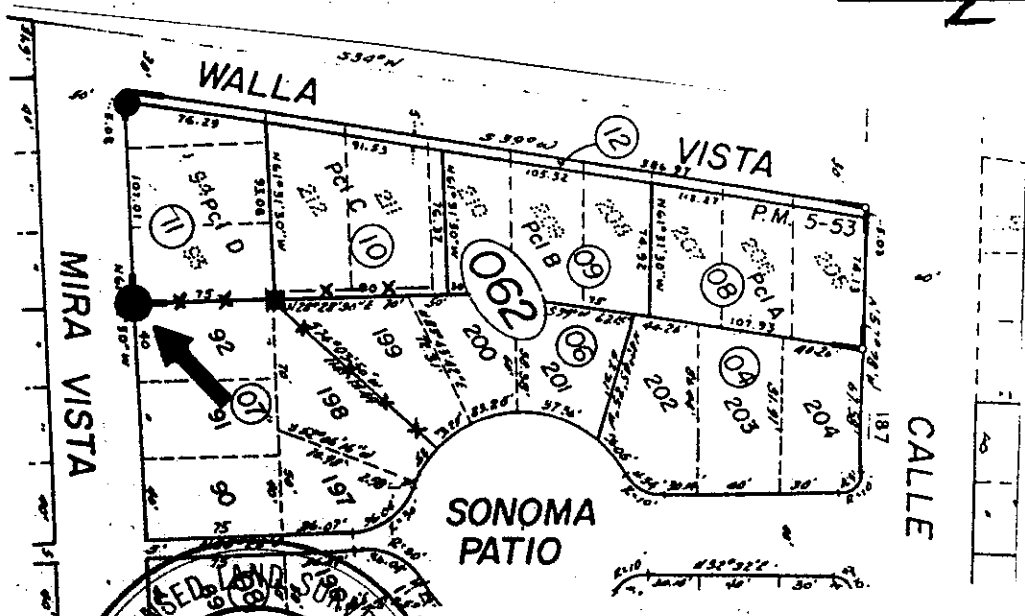
PHYSICAL DESCRIPTION OF MONUMENTS REBUILT OR PERPETUATED

Found points as shown. ● Found pipe and L.S. 2738 ■ Found hub no tag.

● Set rebar and cap L.S. 3887 under rail fence line.

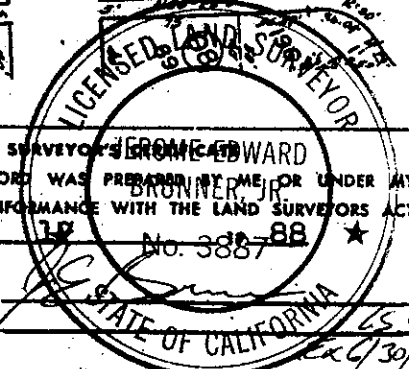
CALIFORNIA COORDINATE SYSTEM ORDER: FIRST  SECOND  THIRD   
 STATIONS USED: NGS (USC & GS)  STATE  COUNTY  OTHER  STATION \_\_\_\_\_ STATION \_\_\_\_\_  
 ZONE \_\_\_\_\_ ELEVATION \_\_\_\_\_ NORTHINGS (Y) \_\_\_\_\_ EASTINGS (X) \_\_\_\_\_

SKETCH: (Include reference tie or witness points, remarks and topo of area)



THIS CORNER RECORD WAS PREPARED BY ME OR UNDER MY DIRECTION IN CONFORMANCE WITH THE LAND SURVEYORS ACT ON August 18 No. 3887

SIGNED: \_\_\_\_\_  
 L.S. or R.C.E. No. \_\_\_\_\_



COUNTY SURVEYOR'S CERTIFICATE

THE CORNER RECORD WAS RECEIVED \_\_\_\_\_ 19\_\_\_\_  
 AND EXAMINED AND FILED \_\_\_\_\_ 19\_\_\_\_

BY: \_\_\_\_\_  
 TITLE: \_\_\_\_\_

DOCUMENT No. \_\_\_\_\_

STATEMENT ON BACK OF SHEET