

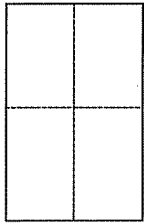
CORNER RECORD

Document Number APN 195-041-37

City of Stinson Beach

County of Marin, California

Brief Legal Description Lot 86, Seadrift Lagoon Sub'd. No. One, 10 R.M. 95



CORNER TYPE

Government Corner Control
Meaneder Property
Rancho Other
Date of Survey _____

COORDINATES (Optional)

N. _____
E. _____
Zone _____ NAD27 NAD83
NAD83 Epoch _____
Elev. _____
Vert. Datum: NGVD29 NAVD88
Meas. Units: Metric Imperial

Corner – Left as found Found and tagged Established Reestablished Rebuilt

Identification and type of corner found: Evidence used to identify or procedure used to establish or reestablish the corner:
Found standard street monuments were used to reestablish the location
of Lot 86, 10 R.M. 95.

A description of the physical condition of the monument as found and as set or reset:
Found rebar and cap, LS 6784; Set 1/2" iron pipes LS 7237 (see reverse side)

SURVEYOR'S STATEMENT

This Corner Record was prepared by me or under my direction in conformance with
the Land Surveyor's Act on APRIL 30 2012
Signed Michael E. Ford P.L.S. or R.C.E. No. 7237

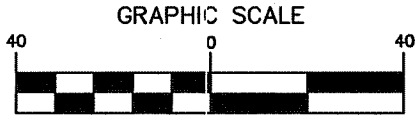


COUNTY SURVEYOR'S STATEMENT

This Corner Record was received MAY 29, 2012
and examined and filed JULY 5, 2012
Signed _____ P.L.S. or R.C.E. No. 7128
Title COUNTY SURVEYOR



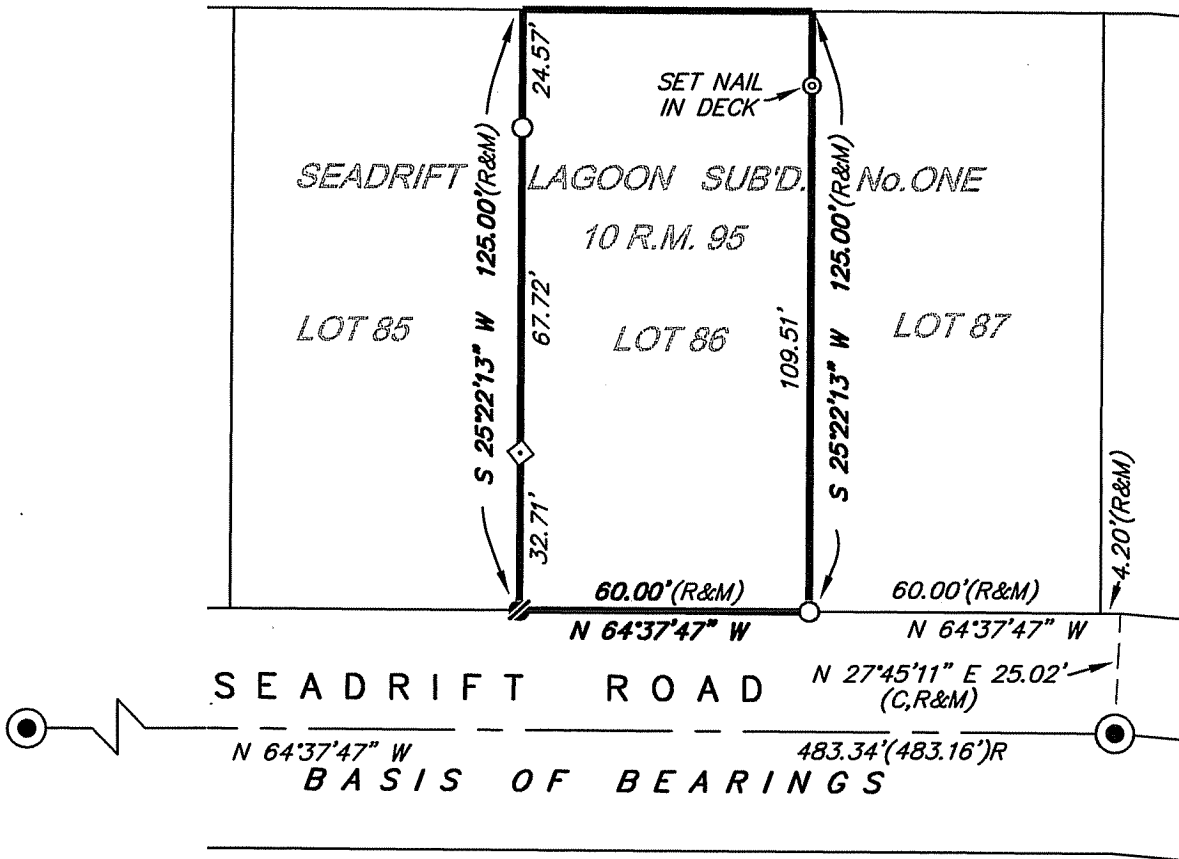
County Surveyor's Comment



(IN FEET)
1 inch = 40 ft.

LEGEND

- FOUND STANDARD STREET MONUMENT PER 10 R.M. 95
- ▨ FOUND REBAR & CAP, LS 6784, NO RECORD
- ◇ FOUND WOOD HUB AND TAC, NO RECORD
- SET 1/2" IRON PIPE TAGGED LS 7237
- R SEADRIFT LAGOON SUB'D. No. ONE, 10 R.M. 95
- M MEASURED
- C CALCULATED



BASIS OF BEARINGS

N 64°37'47" W BETWEEN FOUND CENTERLINE MONUMENTS AS SHOWN ON SEADRIFT LAGOON SUBDIVISION No. ONE FILED IN BOOK 10 OF RECORD MAPS AT PAGE 95, MARIN COUNTY RECORDS.



2300 bethards drive, suite J
santa rosa, california 95405
p 707.542.8513 - f 707.542.1825
www.michaelfordinc.com