

**CORNER RECORD**

Document Number

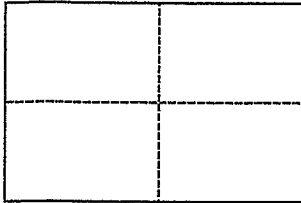
195-041-25

City of \_\_\_\_\_ County of Marin, California

Brief Legal Description Lot 74, as shown on that certain map entitled "Map of Seadrift Lagoon Subdivision No. 1", 10 Maps 95 A.P. No. 195-041-25

**CORNER TYPE**

**COORDINATES  
(Optional)**



Government Corner	___	Control	___	North	_____
Meander	___	Property	<u>X</u>	East	_____
Rancho	___	Other	___	Zone	_____ Datum _____
Date of Survey	<u>August 23, 2004</u>			Elev.	_____

Corner \_\_\_\_\_ Left as found  Found and tagged  Established  Reestablished  Rebuilt

Identification and type of corner found: Evidence used to identify or procedure used to establish or reestablish the corner:

Found monuments per Record Map filed in County of Marin on January 3, 1961 in Volume 10 of Maps at Page 95. Measured 480.09 feet between monuments. Record distance is 480.00 feet, proportioned 0.09 feet equally between all lots adjacent to said monuments. Found lines of occupation in agreement.

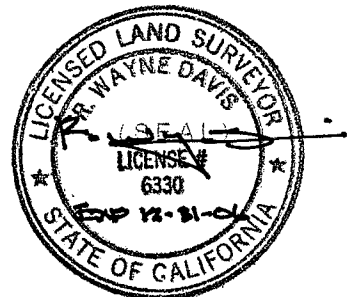
A description of the physical condition of the monument as found and as set or reset: \_\_\_\_\_

Set 3/4 inch iron pipe tagged L.S. 6330 unless otherwise noted on attached plat

**SURVEYOR'S STATEMENT**

This Corner Record was prepared by me or under my direction in conformance with the Land Surveyors' Act on \_\_\_\_\_ October 21, 2004

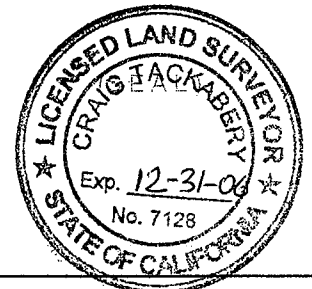
Signed \_\_\_\_\_ L.S. or R.C.E. Number \_\_\_\_\_ L.S. 6330



**COUNTY SURVEYOR'S STATEMENT**

This Corner Record was received OCTOBER 26, 2004 and examined and filed NOVEMBER 17, 2004

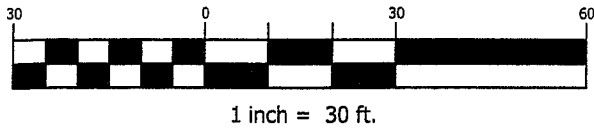
Signed \_\_\_\_\_ Title COUNTY SURVEYOR



County Surveyor's Comment \_\_\_\_\_

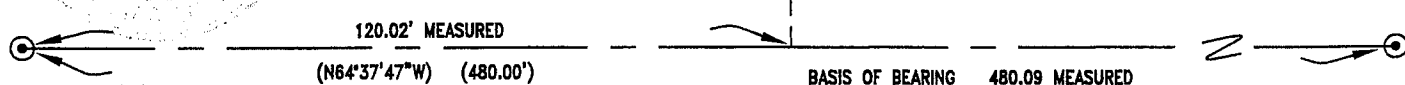
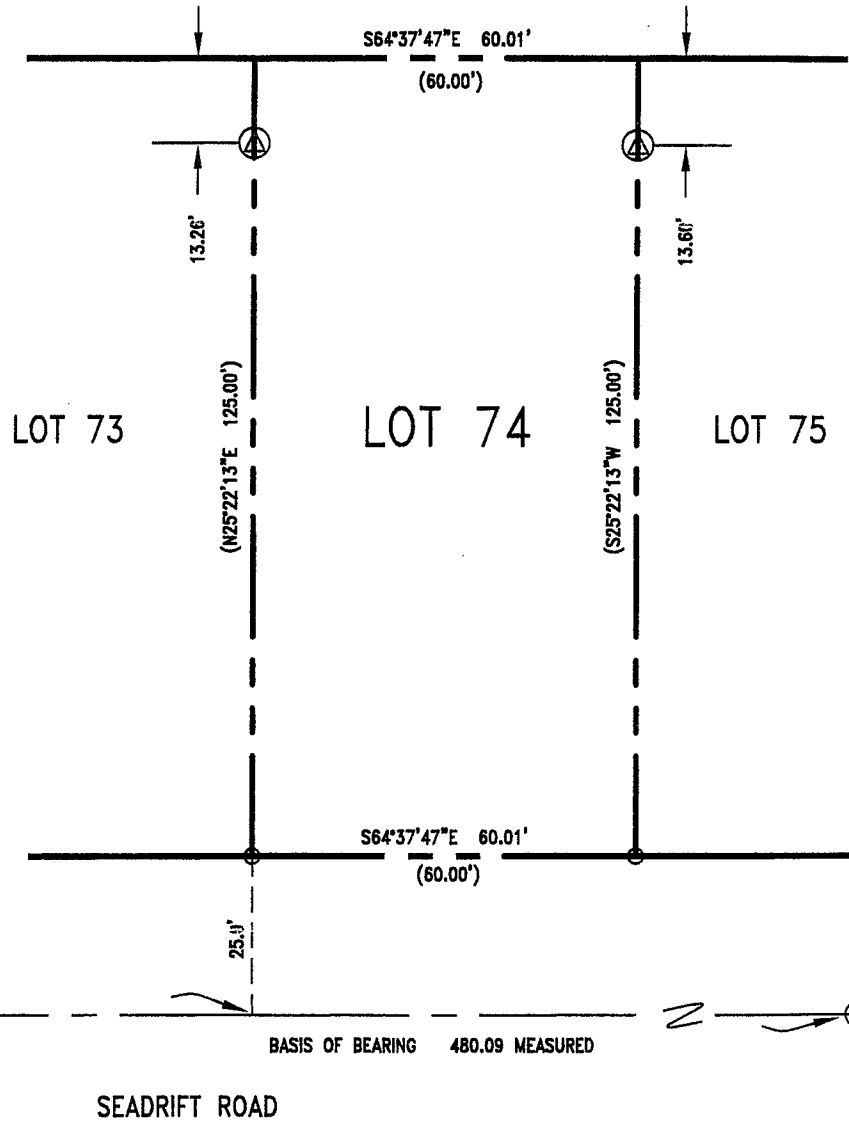


Graphic Scale (in feet)



LEGEND:

- ⊠ SET NAIL & TAG LS 6330
- SET 3/4" IRON PIPE TAGGED LS6330
- ( ) RECORD DATA
- ⊙ FOUND STANDARD MONUMENT



**R.W. DAVIS & ASSOCIATES**  
**LAND SURVEYORS**

790 DeLong Ave.  
Suite 2  
Novato CA 94945  
L.S. 6330  
© 2001

Tel. (415) 898-9099  
Fax (415) 898-2499  
Email:  
RWD@CSWST2.COM

REV.

10/21/04

SCALE: 1" = 30'

**LOT 74**

MAP OF SEADRIFT LAGOON SUBDIVISION  
NO. ONE IN THE COUNTY OF MARIN,  
IN VOLUME 10 OF MAPS AT PAGE 95

STINSON BEACH

MARIN

CALIFORNIA