

AP# 195-041-14

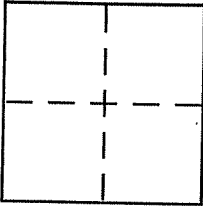
# CORNER RECORD

Document Number 2007\*071131

City of STINSON BEACH

County of MARIN, California

Brief Legal Description LOT 22, 6-RM-92



### CORNER TYPE

Government Corner  Control   
 Meander  Property   
 Rancho  Other   
 Date of Survey \_\_\_\_\_

### COORDINATES (Optional)

N. \_\_\_\_\_  
 E. \_\_\_\_\_  
 Zone \_\_\_\_\_ NAD27  NAD83   
 NAD83 Epoch \_\_\_\_\_  
 Elev. \_\_\_\_\_  
 Vert. Datum: NGVD29  NAVD88   
 Meas. Units: Metric  Imperial

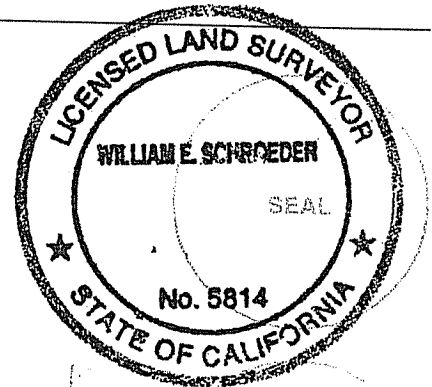
Corner - Left as found  Found and tagged  Established  Reestablished  Rebuilt

Identification and type of corner found: Evidence used to identify or procedure used to establish or reestablish the corner:  
SEE PAGE 2

A description of the physical condition of the monument as found and as set or reset:  
SEE PAGE 2

### SURVEYOR'S STATEMENT

This Corner Record was prepared by me or under my direction in conformance with the Land Surveyors Act on 2/26/10  
 Signed William Schroeder P.L.S or R.C.E. No. 5814

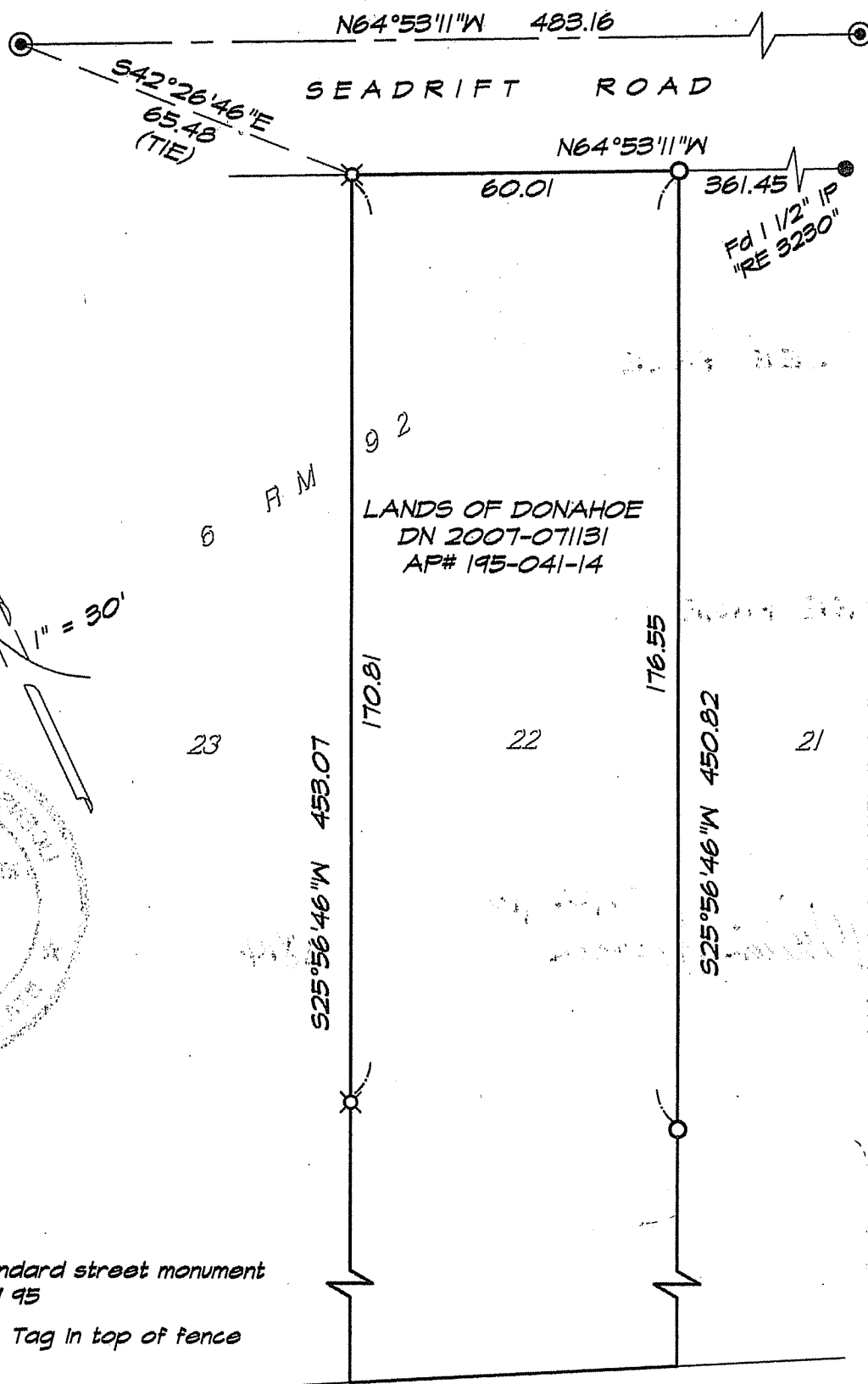


### COUNTY SURVEYOR'S STATEMENT

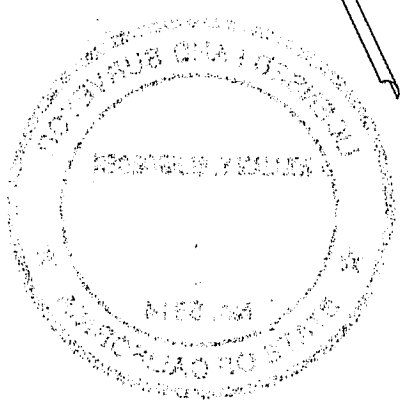
This Corner Record was received MARCH 1, 2010  
 and examined and filed APRIL 6, 2010  
 Signed [Signature] P.L.S or R.C.E. No. 7128  
 Title COUNTY SURVEYOR



County Surveyor's Comment \_\_\_\_\_



SCALE 1" = 30'



**LEGEND**

- ⊙ = Found standard street monument  
Per 10 RM 95
- ⊗ = Set Nail & Tag in top of fence
- = Set 3/4" Iron Pipe with plastic cap  
"LS 5814"