

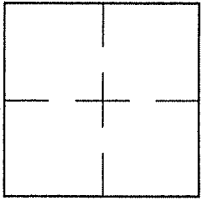
CORNER RECORD

Document Number A.P.195-041-04

City of STINSON BEACH

County of MARIN, California

Brief Legal Description LOT 17 PER 6 R.M. 92



CORNER TYPE

COORDINATES (Optional)

Government Corner  Control   
 Meander  Property   
 Rancho  Other   
 Date of Survey 8/22/07

N. \_\_\_\_\_  
 E. \_\_\_\_\_  
 Zone \_\_\_\_\_ NAD27  NAD83   
 NAD83 Epoch \_\_\_\_\_  
 Elev. \_\_\_\_\_  
 Vert. Datum: NGVD29  NAVD88   
 Meas. Units: Metric  Imperial

Corner- Left as found  Found and tagged  Established  Reestablished  Rebuilt

Identification and type of corner found: Evidence used to identify or procedure used to establish or reestablish the corner:

ESTABLISHED THE WESTERLY PROPERTY LINE OF LOT 17 PER 6 R.M. 92 USING FOUND STREET MONUMENTS  
PER 10 R.M. 95 FOR THE BASIS OF BEARING AND HOLDING FOUND 2" PIPE/TAG RE 3230 PER 6 R.M. 92  
FOR LOCATION AND AS SHOWN ON SHEET 2.

A description of the physical condition of the monument as found and as set or reset:

FOUND HUB/TAG R.E. 3230 AT  
THE NORTHERNLY CORNER OF LOT 17. RESET WITH A 3/4" PIPE AND PLUG AND USED FOUND TAG RE 3230.

SURVEYOR'S STATEMENT

This Corner Record was prepared by me or under my direction in conformance with

the Land Surveyor's Act on AUGUST 22 2007

Signed Lawrence P. Doyle P.L.S. or R.C.E. No. P.L.S. 4694



COUNTY SURVEYOR'S STATEMENT

This Corner Record was received AUGUST 27, 2007

and examined and filed SEPTEMBER 12, 2007

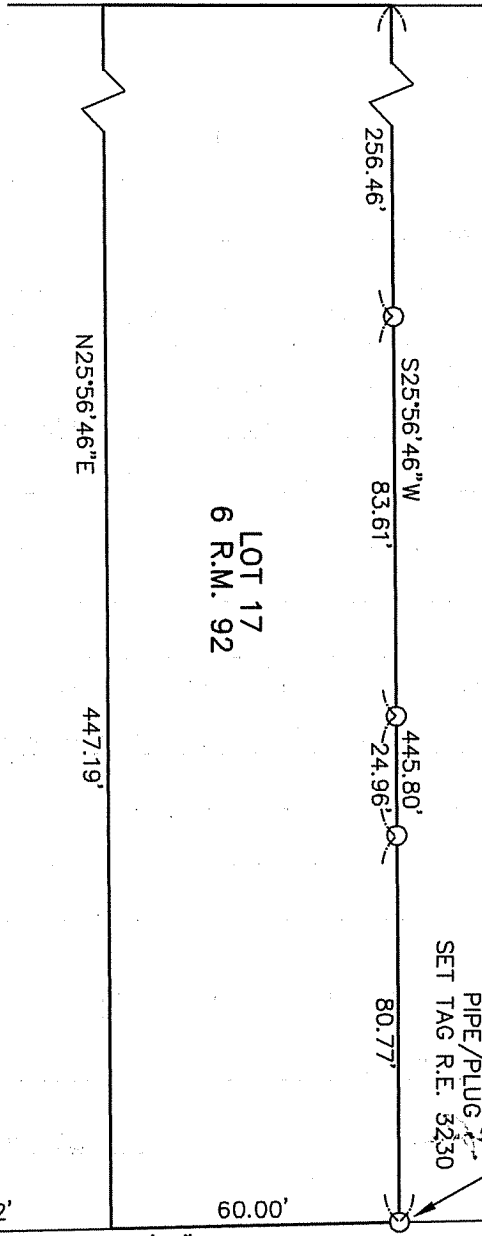
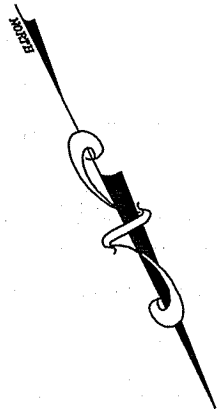
Signed [Signature] P.L.S. or R.C.E. No. 7128

Title COUNTY SURVEYOR

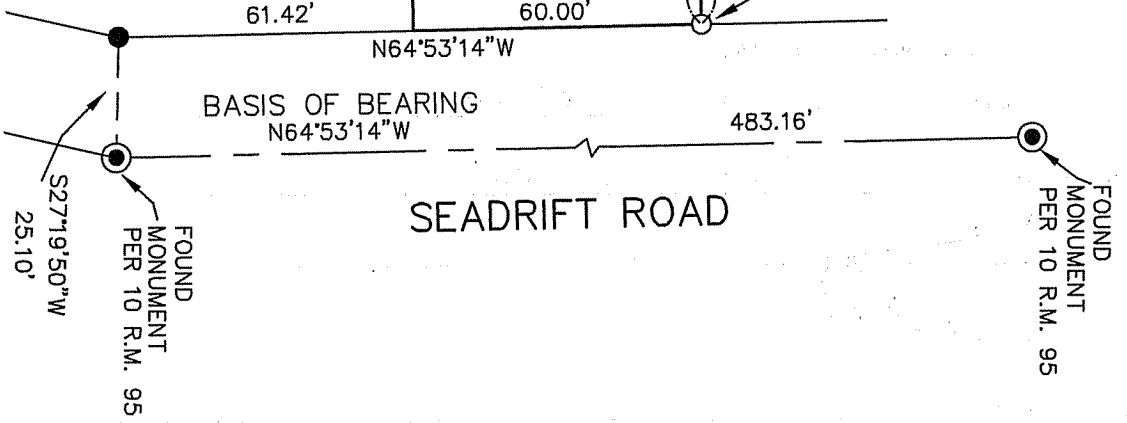
County Surveyor's Comment \_\_\_\_\_



PACIFIC OCEAN

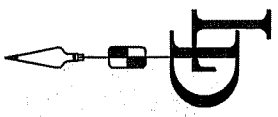


FOUND HUB/TAG  
R.E. 3230  
RESET WITH 3/4\"/>  
PIPE/PLUG  
SET TAG R.E. 3230



LEGEND

- STREET MONUMENT PER 10 R.M. 95
- FOUND 2" PIPE/TAG R.E. 3230 PER 6 R.M. 92
- SET 3/4" PIPE/PLUG L.S. 4694



|  |               |   |              |
|--|---------------|---|--------------|
| CORNER RECORD<br>LOT 17<br>6 R.M. 92<br>MARIN COUNTY |               | CALIFORNIA  |              |
| SCALE: 1" = 40'                                      | DATE: 8/22/07 | LAWRENCE P. DOYLE<br>LAND SURVEYOR/CIVIL ENGINEER<br>P.O. BOX 1609<br>MILL VALLEY CA 94942 (415-388-9585) |              |
| STINSON BEACH  |               | DRAWN BY:   | SHEET 2 OF 2 |
|  |               | DRAWING NO.   | 942-01       |