

# CORNER RECORD

Agency Index

DPW # 19-027

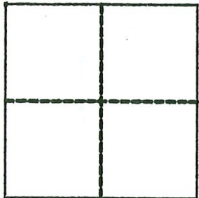
Document Number

195-031-29B

City of Stinson Beach

County of Marin, California

Brief Legal Description Being Lot 59, per "Map of Seadrift Lagoon Sub'd No. One" filed in  
Volume 10 of Maps at Page 95, Marin County Records



### CORNER TYPE

Government Corner  Control  
Meander  Property  
Rancho  Other

### COORDINATES (Optional)

N. \_\_\_\_\_ E. \_\_\_\_\_  
 Elevation \_\_\_\_\_  
 Units Metric  U.S. Survey Foot   
 Horizontal Datum \_\_\_\_\_  
Zone \_\_\_\_\_ Epoch Date \_\_\_\_\_  
Vertical Datum \_\_\_\_\_

Date of Survey February 28, 2019

Complies with Public Resources Code §§8801-8819

Complies with Public Resources Code §§8890-8902

PLS Act Ref:  8765(d)  8771  8773  Other:

Corner/Monument:  Left as found  Established  Rebuilt  Pre-Construction  
 Found and tagged  Reestablished  Referenced  Post-Construction

Narrative of corner identified and monument as found, set, reset, replaced, or removed:

See sheet #2 for description (s):

### SURVEYOR'S STATEMENT

This Corner Record was prepared by me or under my direction in conformance with the Professional Land Surveyors' Act on April 24, 2019

Signed [Signature] P.L.S. or R.C.E. No. 6649



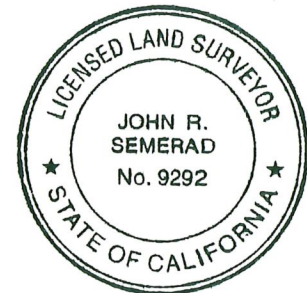
### COUNTY SURVEYOR'S STATEMENT

This Corner Record was received April 29, 2019

and examined and filed May 23, 2019

Signed [Signature] P.L.S. or R.C.E. No. 9292

Title DEPUTY C.S.

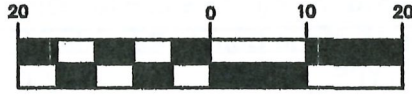


County Surveyor's Comment \_\_\_\_\_  
\_\_\_\_\_  
\_\_\_\_\_

All distances shown are in feet and decimals thereof

# LEGEND

## GRAPHIC SCALE



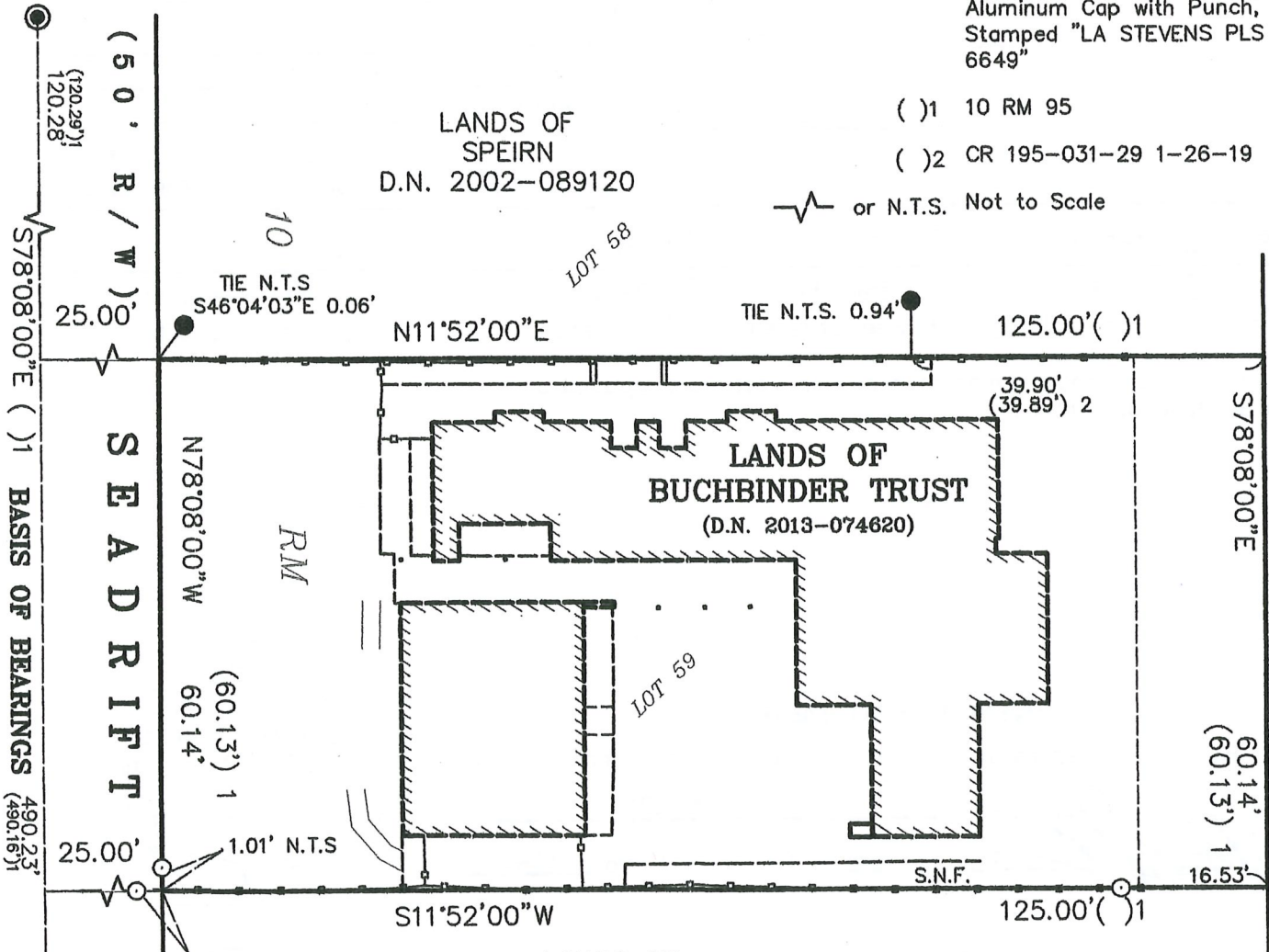
( IN FEET )

- Found 2" Brass Disc in Concrete Hand Hole Stamped, "RCE 18221 M-8"
- Set 5/8" Rebar & 1 1/2" Aluminum Cap with Punch, Stamped "LA STEVENS PLS 6649"
- Found 5/8" Rebar & 1 1/2" Aluminum Cap with Punch, Stamped "LA STEVENS PLS 6649"

( 1 ) 10 RM 95

( )2 CR 195-031-29 1-26-19

or N.T.S. Not to Scale



## Corner Record Lands of Buchbinder Trust

(Lot 59, 10 MAPS 95)

Stinson Beach Marin County California  
Scale: 1" = 20' January, 2016

**L.A. Stevens & Associates, Inc.**

Professional Land Surveyors \* (415) 382-7713  
7 Commercial Blvd., Suite 1 \* Novato, CA 94949

Lawrence A. Stevens, PLS 6649