

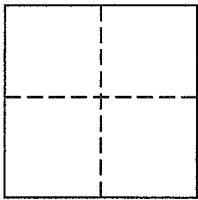
**Lands of Buchbinder  
Job #: 151692**

**CORNER RECORD**

Document Number 195-031-29

Town of Stinson Beach in County of Marin, California

Brief Legal Description: Being Lot 59, per "Map of Seadrift Lagoon Sub'd No. One" filed in Volume 10 of Maps, at Page 95, Marin County Records.



**CORNER TYPE**

**COORDINATES (Optional)**

Government Corner  Control   
Meander  Property   
Rancho  Other

N \_\_\_\_\_  
E \_\_\_\_\_  
Zone \_\_\_\_\_ NAD27  NAD83   
NAD 83 Epoch \_\_\_\_\_  
Elev. \_\_\_\_\_  
Vert. Datum: NGVD29  NAVD88   
Meas. Units: Metric  Imperial

Date of Survey September 16, 2015

**Corner -** Left as found  Found and tagged  Established  Reestablished  Rebuilt

Identification and type of corner found: Evidence used to identify or procedure used to establish or reestablish the corner:  
See Page 2 of 2 for information

A description of the physical condition of the monument as found and as set or reset:  
See Page 2 of 2 for information

**SURVEYOR'S STATEMENT**

This Corner Record was prepared by me or under my direction in conformance with  
The Land Surveyor's Act on January 6, 2016.

Signed [Signature] P.L.S. 6649



**COUNTY SURVEYOR'S STATEMENT**

This Corner Record was received NOVEMBER 30, 2015

and examined and filed JANUARY 26, 2016

Signed [Signature] P.L.S. or R.C.E. No. 7821

Title County Surveyor

County Surveyors' Comment \_\_\_\_\_



All distances shown are in feet and decimals thereof

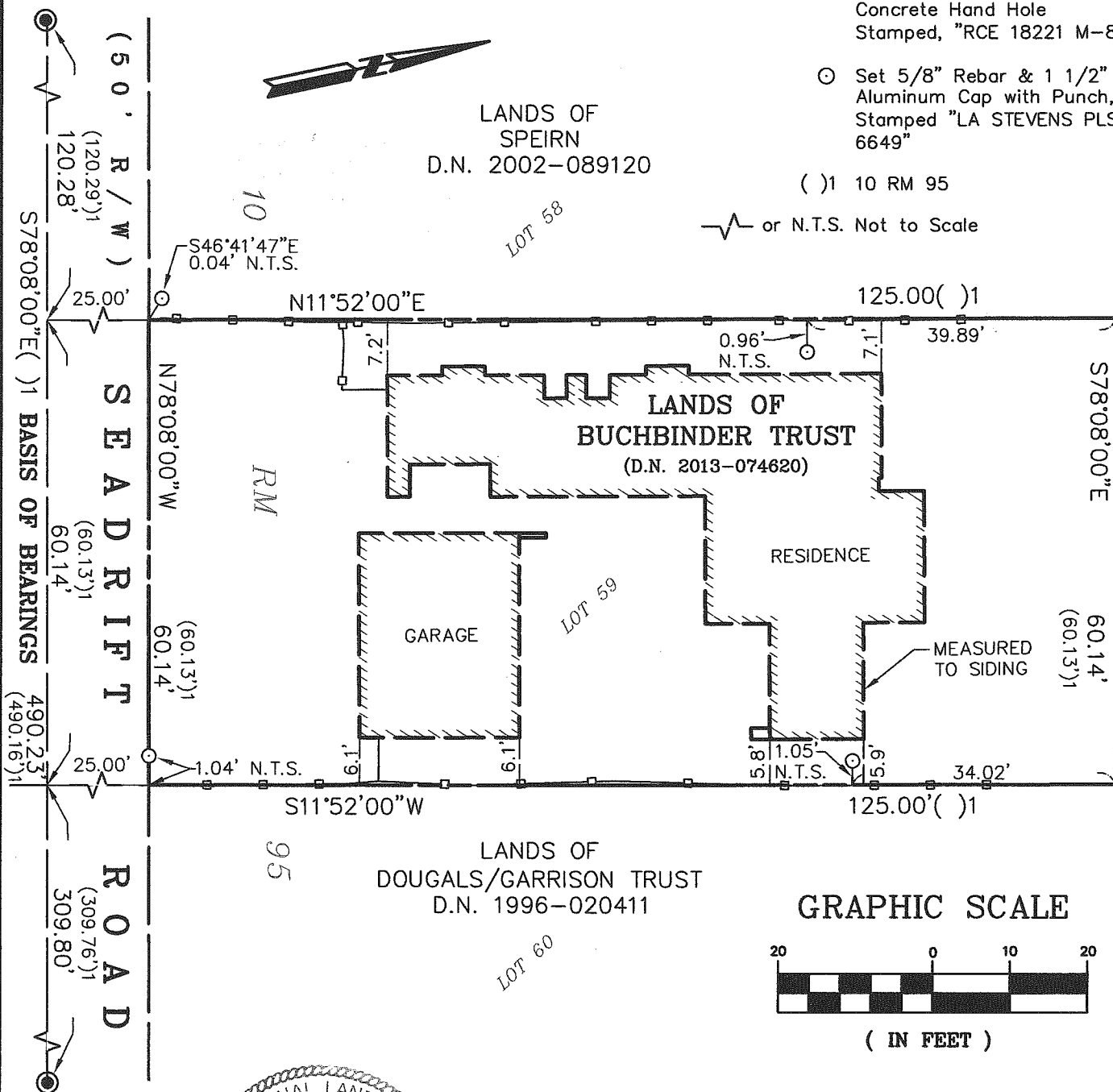
# LEGEND

● Found 2" Brass Disc in Concrete Hand Hole Stamped, "RCE 18221 M-8"

○ Set 5/8" Rebar & 1 1/2" Aluminum Cap with Punch, Stamped "LA STEVENS PLS 6649"

( ) 1 10 RM 95

or N.T.S. Not to Scale



## Corner Record Lands of Buchbinder Trust

(Lot 59, 10 MAPS 95)

Stinson Beach Marin County California  
Scale: 1" = 20' January, 2016

L.A. Stevens & Associates, Inc.

Professional Land Surveyors \* (415) 382-7713  
7 Commercial Blvd., Suite 1 \* Novato, CA 94949

Lawrence A. Stevens, PLS 6649

Copyright © Lawrence A. Stevens 2015

Job # 15-1692

Page 2 Of 2