

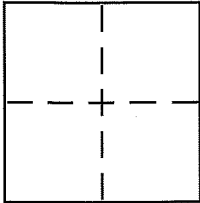
CORNER RECORD

Document Number APN 195-031-14,15

City of STINSON BEACH

County of MARIN, California

Brief Legal Description LOTS 35+36, MAP OF SEADRIFT SUBD. NO. ONE



CORNER TYPE

Government Corner Control
Meander Property
Rancho Other
Date of Survey 2/6/2013

COORDINATES (Optional)

N. _____
E. _____
Zone _____ NAD27 NAD83
NAD83 Epoch _____
Elev. _____
Vert. Datum: NGVD29 NAVD88
Meas. Units: Metric Imperial

Corner - Left as found Found and tagged Established Reestablished Rebuilt

Identification and type of corner found: Evidence used to identify or procedure used to establish or reestablish the corner:

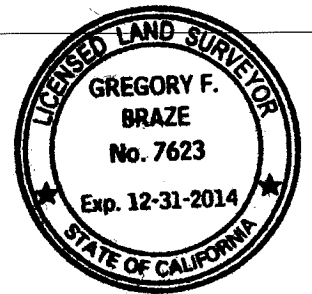
FOUND CENTERLINE MONUMENTS ON SEADRIFT ROAD PER
MAP OF SEADRIFT LAGOON SUBDIVISION NO. ONE, 10 RM 95,
AND SPIKE AT ANGLE POINTS & NORTHEAST CORNER OF
LOT 37. HELD RECORD FOR LOTS 35+36 PER 6 MAPS 92.

A description of the physical condition of the monument as found and as set or reset: SET 3/4" IRON PIPE
W/PLASTIC CAP & TACK "LS 7623" AT NORTHEAST CORNER AND
ON WEST LINE OF LOT 35. SET NAIL & BRASS TAG "LS 7623"
AT NORTH WEST CORNER & ON THE EAST LINE OF LOT 35.

SURVEYOR'S STATEMENT

This Corner Record was prepared by me or under my direction in conformance with the Land Surveyor's Act on 5-13-2013

Signed Gregory F. Braze P.L.S or R.C.E. No. 7623



COUNTY SURVEYOR'S STATEMENT

This Corner Record was received 5-14-2013

and examined and filed 5-14-2013

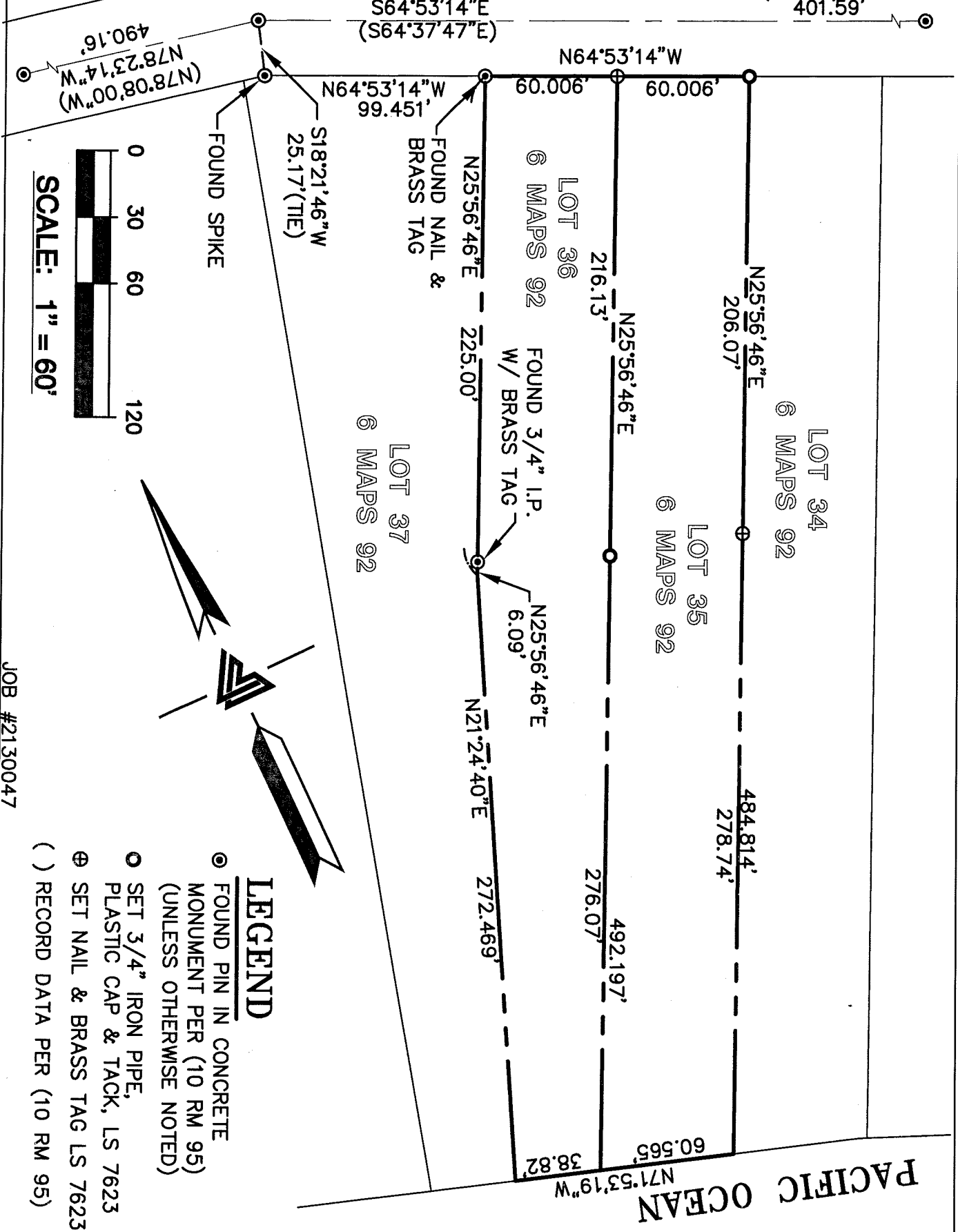
Signed Richard G. Simonitch P.L.S or R.C.E. No. 7821

Title DEPUTY CO. SURVEYOR



County Surveyor's Comment _____

SEADRIFT ROAD (50')



JOB #2130047