

# CORNER RECORD

Document Number A.P.# 195-031-10

City of STINSON BEACH

County of MARIN, California

Brief Legal Description LOT 40 6 R.M. 92

### CORNER TYPE

Government Corner  Control   
Meander  Property   
Rancho  Other   
Date of Survey 03/05/02

### COORDINATES (Optional)

N. \_\_\_\_\_  
E. \_\_\_\_\_  
Zone \_\_\_\_\_ NAD27  NAD83   
NAD83 Epoch \_\_\_\_\_  
Elev \_\_\_\_\_  
Vert. Datum: NGVD29  NAVD88   
Meas. Units: Metric  Imperial

Corner- Left as found  Found and tagged  Established  Reestablished  Rebuilt

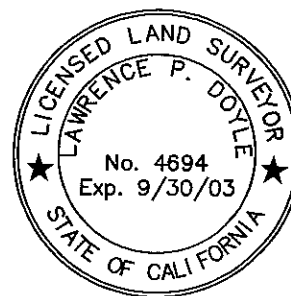
Identification and type of corner found: Evidence used to identify or procedure used to establish or reestablish the corner:  
REESTABLISHED CORNERS FROM MONUMENTS ON 10 R.M. 95

A description of the physical condition of the monument as found and as set or reset: SEE SHEET 2.

### SURVEYOR'S STATEMENT

This Corner Record was prepared by me or under my direction in conformance with  
the Land Surveyor's Act on APRIL 1 2002

Signed Lawrence P. Doyle P.L.S. or R.C.E. No. P.L.S. 4694



### COUNTY SURVEYOR'S STATEMENT

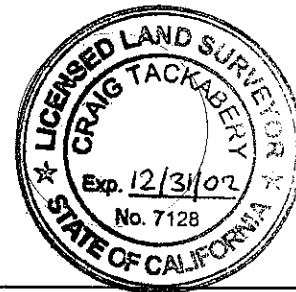
This Corner Record was received APRIL 17, 2002

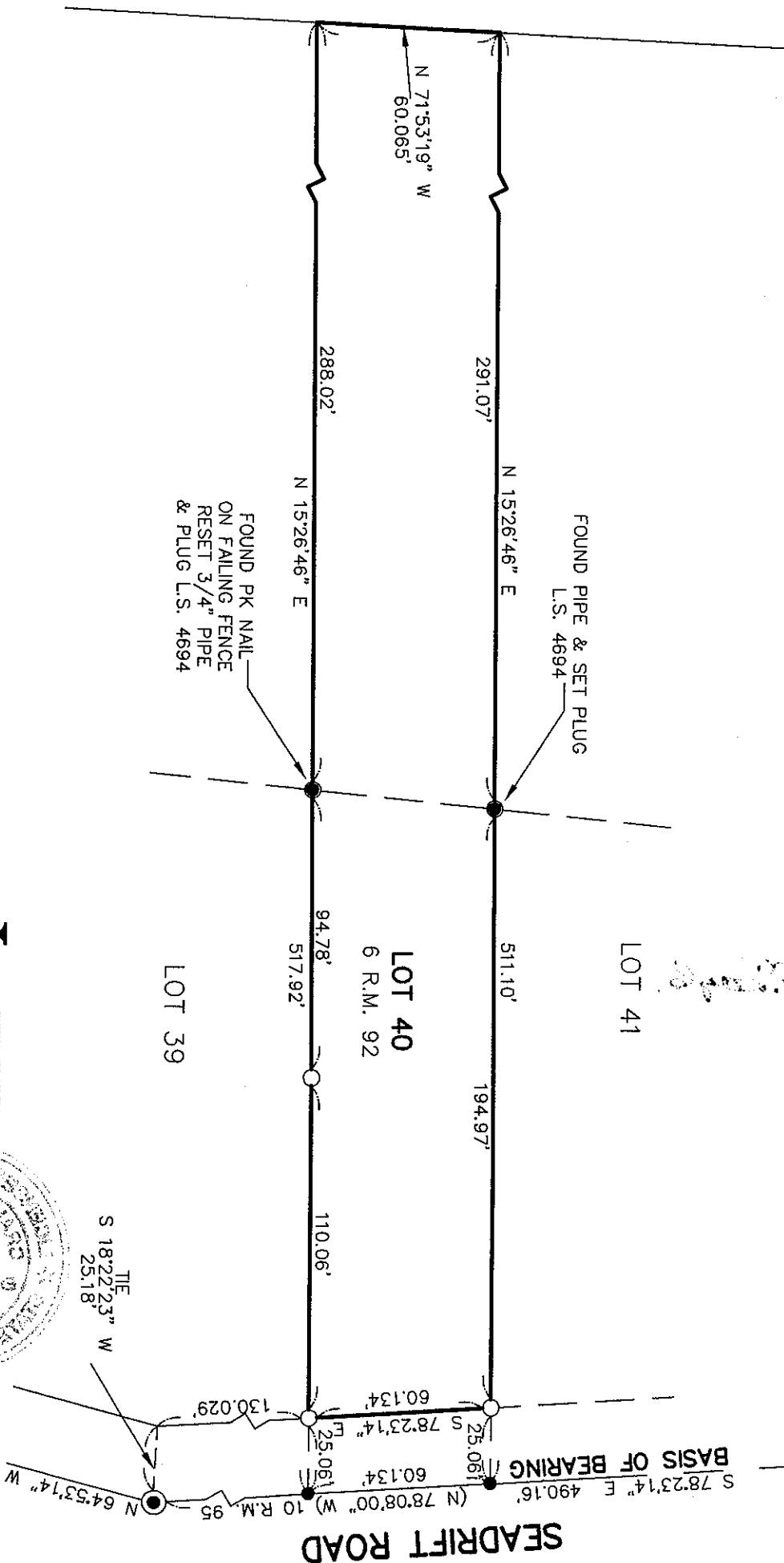
and examined and filed APRIL 17, 2002

Signed Craig Tackabery P.L.S. or R.C.E. No. 7128

Title DEPUTY

County Surveyor's Comment \_\_\_\_\_





**LEGEND**

- FOUND STANDARD STREET MONUMENT
- SET 3/4" PIPE & PLUG L.S. 4694
- FOUND PK NAIL (UNLESS NOTED)

**BASIS OF BEARING**

BEARING OF S 78°23'14" E  
BETWEEN FOUND STREET MONUMENTS  
10 R.M. 95



STINSON BEACH MARIN COUNTY CALIFORNIA	
<b>CORNER RECORD</b>	
<b>LOT 40 6 R.M. 92</b>	
SCALE: 1" = 50'	DRAWN BY:
DATE: 3/5/02	SHEET 2 OF 2
LAND SURVEYOR/CIVIL ENGINEER <b>LAWRENCE P. DOYLE</b> P.O. BOX 1609 MILL VALLEY CA 94942 (415-388-9585)	
DRAWING NO. 960-01	

**SEADRIFT ROAD**

**BASIS OF BEARING**

