

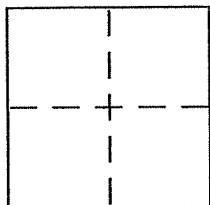
# CORNER RECORD

Document Number I.N. 1995-06492

City of Vicinity Bolinas

County of MARIN, California

Brief Legal Description Most northerly corner Lot 52, Book 1 of Maps, Page 19; Marin County Record (Granda Vista Tract)



### CORNER TYPE

Government Corner  Control   
 Meander  Property   
 Rancho  Other   
 Date of Survey \_\_\_\_\_

### COORDINATES (Optional)

N. \_\_\_\_\_  
 E. \_\_\_\_\_  
 Zone \_\_\_\_\_ NAD27  NAD83   
 NAD83 Epoch \_\_\_\_\_  
 Elev. \_\_\_\_\_  
 Vert. Datum: NGVD29  NAVD88   
 Meas. Units: Metric  Imperial

Corner - Left as found  Found and tagged  Established  Reestablished  Rebuilt

Identification and type of corner found: Evidence used to identify or procedure used to establish or reestablish the corner:

AS SHOWN UPON REVERSE SIDE

A description of the physical condition of the monument as found and as set or reset:

AS SHOWN UPON REVERSE SIDE

### SURVEYOR'S STATEMENT

This Corner Record was prepared by me or under my direction in conformance with the Land Surveyor's Act on 11 June 2009

Signed [Signature] P.L.S or R.C.E. No. PLS 4794



### COUNTY SURVEYOR'S STATEMENT

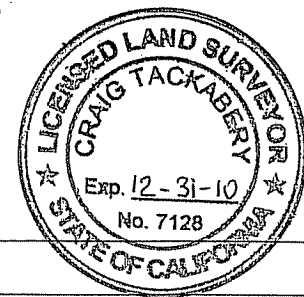
This Corner Record was received JUNE 15, 2009

and examined and filed AUGUST 12, 2009

Signed [Signature] P.L.S or R.C.E. No. 7128

Title COUNTY SURVEYOR

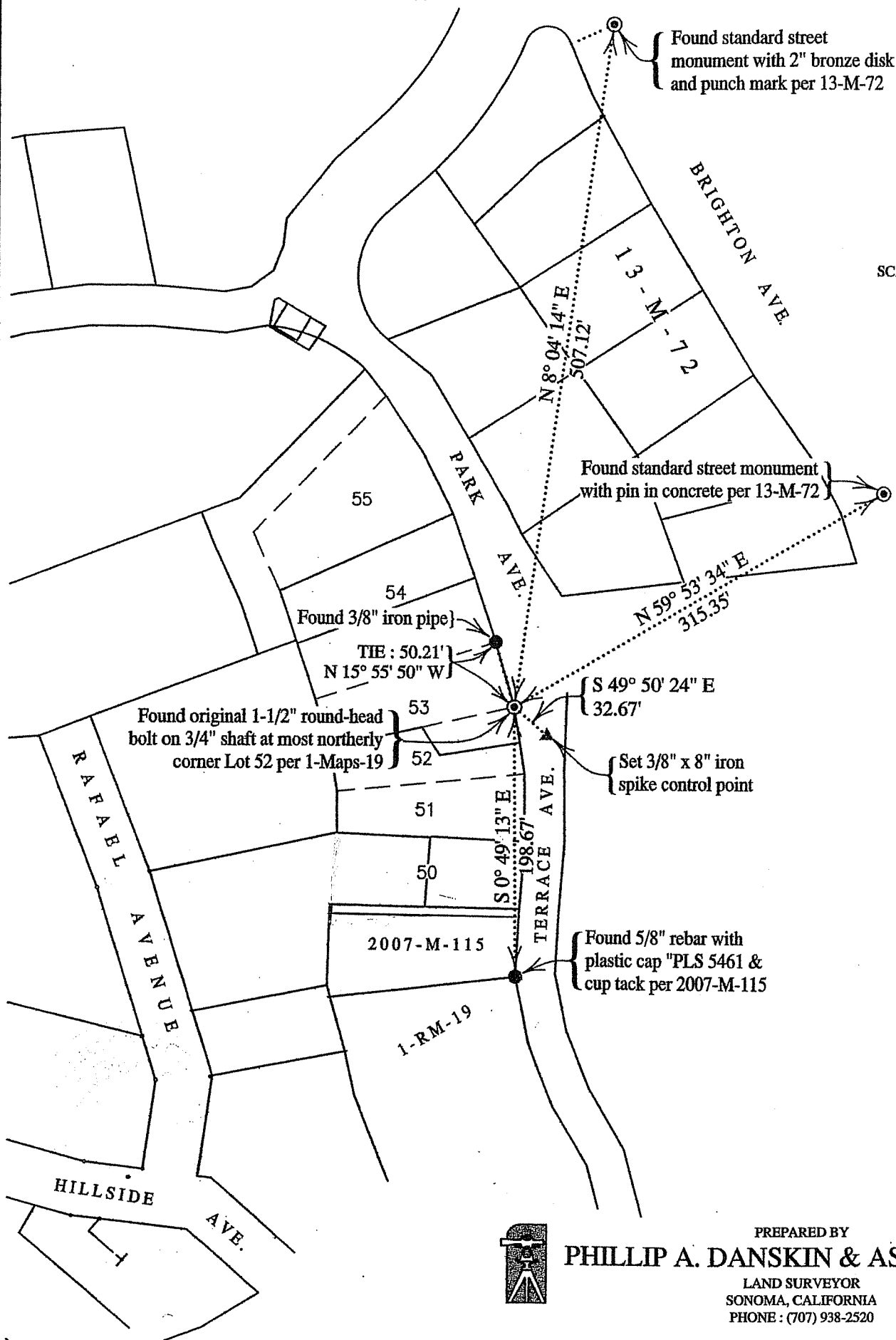
County Surveyor's Comment \_\_\_\_\_



0 100 200 300 400 500

SCALE: 1" = 100'

SCALE: 1" = 100'



PREPARED BY  
**PHILLIP A. DANSKIN & ASSOCIATES**

LAND SURVEYOR  
 SONOMA, CALIFORNIA  
 PHONE: (707) 938-2520