

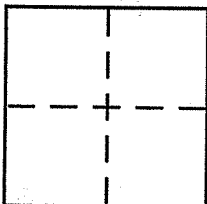
CORNER RECORD

Document Number 2003-44260

City of Bolinas

County of Marin, California

Brief Legal Description Lots 4, 7, 8 13-RM-72 "Sharon Park"



CORNER TYPE

- Government Corner Control
- Meander Property
- Rancho Other
- Date of Survey _____

COORDINATES (Optional)

N. _____
 E. _____
 Zone _____ NAD27 NAD83
 NAD83 Epoch _____
 Elev. _____
 Vert. Datum: NGVD29 NAVD88
 Meas. Units: Metric Imperial

Corner - Left as found Found and tagged Established Reestablished Rebuilt

Identification and type of corner found: Evidence used to identify or procedure used to establish or reestablish the corner:

Found monuments as shown on 13-RM-72 and 11-05-49, see page 2.

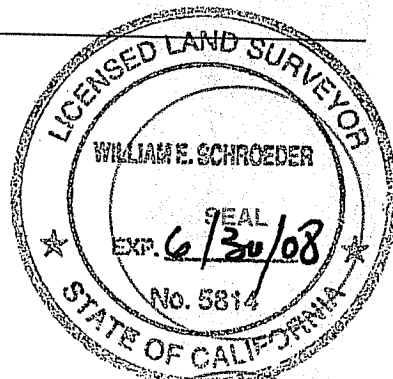
A description of the physical condition of the monument as found and as set or reset:

Set 3/4" iron pipes with plastic cap "CS 5814", see page 2.

SURVEYOR'S STATEMENT

This Corner Record was prepared by me, or under my direction in conformance with the Land Surveyor's Act on 9/19/07

Signed [Signature] P.L.S or R.C.E. No. 5814



COUNTY SURVEYOR'S STATEMENT

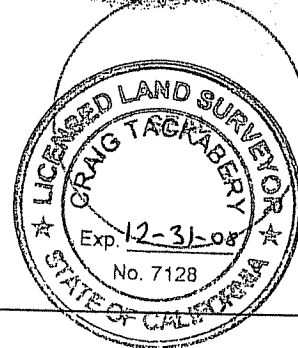
This Corner Record was received SEPTEMBER 25, 2007

and examined and filed NOVEMBER 26, 2007

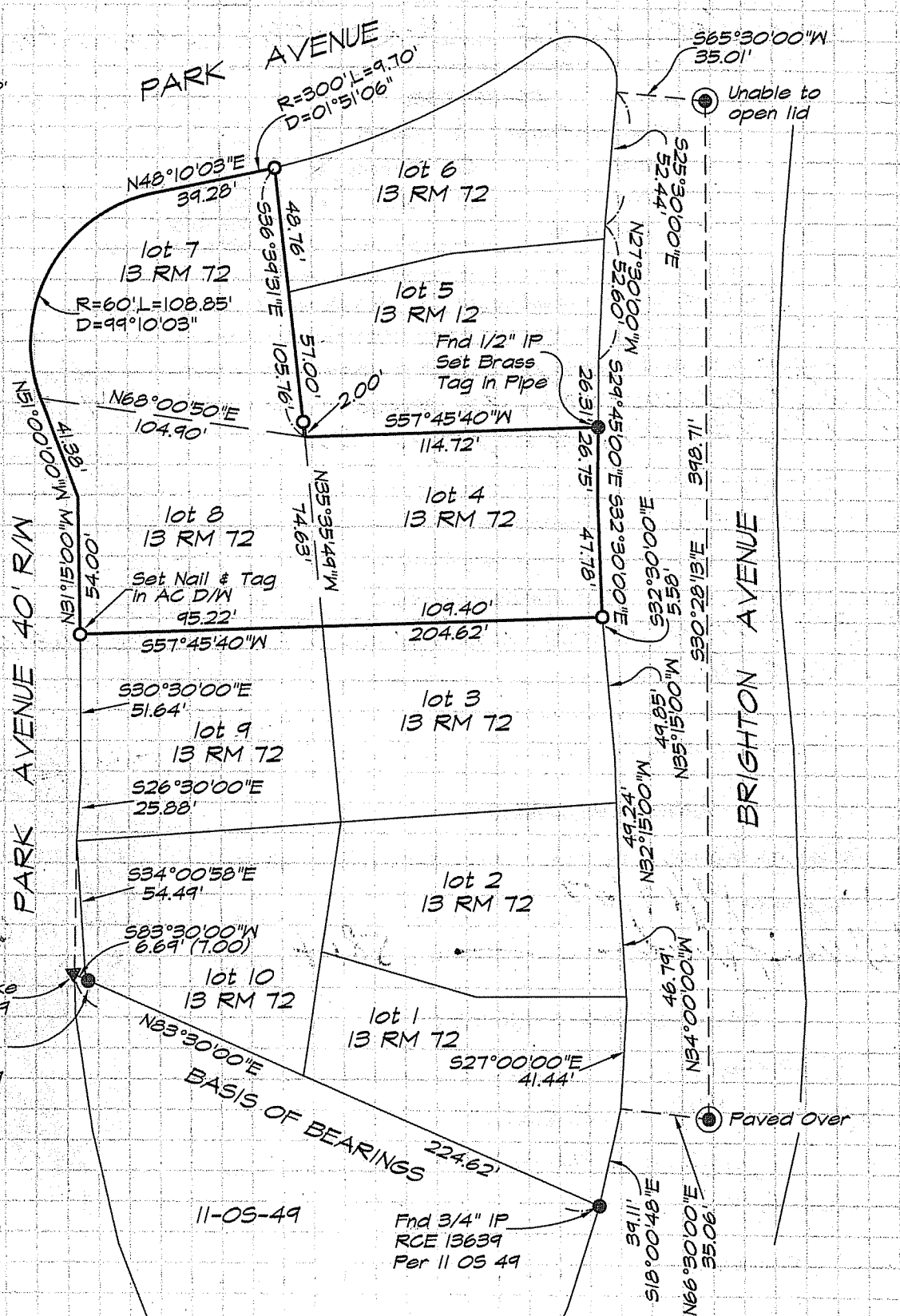
Signed [Signature] P.L.S or R.C.E. No. 7128

Title COUNTY SURVEYOR

County Surveyor's Comment _____



SCALE 1" = 60'



LEGEND

- ⊙ = Found Standard Street Monument
- = Found monument as shown.
- = Set 3/4" Iron Pipe with plastic cap "LS 5814", unless otherwise noted

NOTE:
Standard street monuments exist but are unaccessible. Their positions conform with other found points per 11-05-49.

S-1623