

CORNER RECORD

COUNTY OF Marin T. _____ R. _____ MERIDIAN CALIFORNIA

CORNER TYPE: GOVT. CORNER MEANDER RANCHO CONTROL OTHER

CORNER IDENTIFICATION — DATE OF VISIT July 7 1992



Street monument on Brighton Avenue, Bolinas as shown on 11 Surveys 49 and 13 Maps 72 AP sheet 193-10

CORNER — LEFT AS FOUND FOUND AND TAGGED REESTABLISHED OBLITERATED CORNER RESULT

PHYSICAL DESCRIPTION OF CORNER FOUND; EVIDENCE AND METHOD USED TO IDENTIFY OR REESTABLISH

Northerly monument of a pair was destroyed by sewer work. To reset, used found iron pipes on northerly line of Bolinas Park for basis of bearing. Held bearing and distance between monuments per 11 0.5.49

PHYSICAL DESCRIPTION OF MONUMENTS RESULT OR PERPETUATED

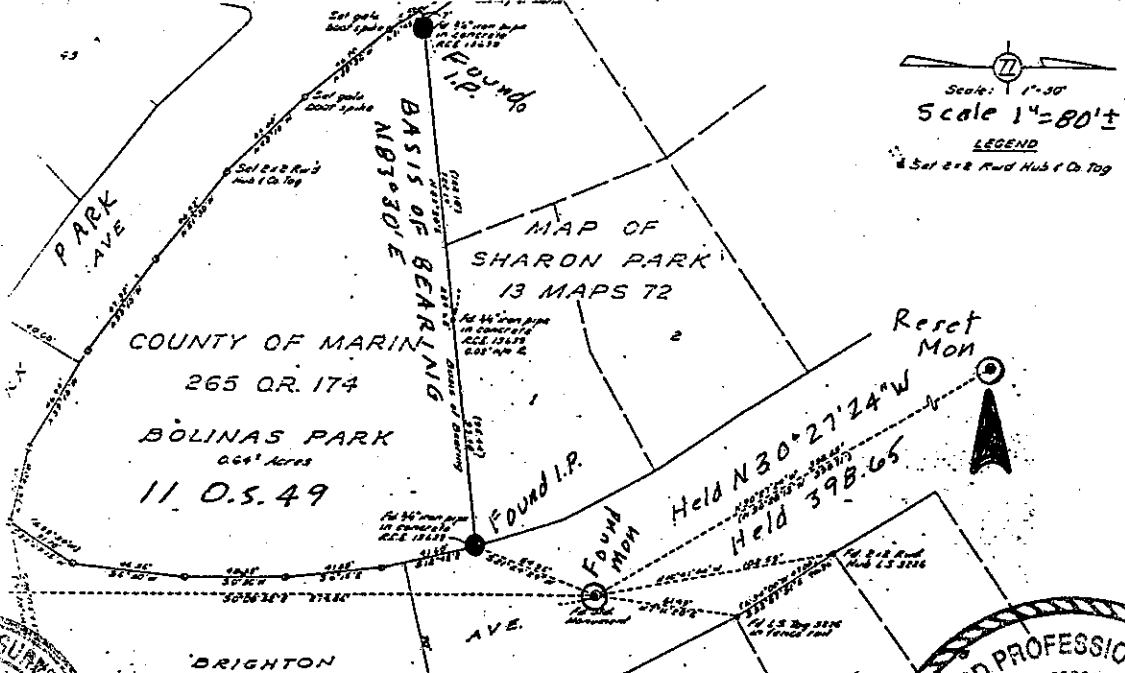
Reset standard street monument in cast iron ring and cover

CALIFORNIA COORDINATE SYSTEM ORDER: FIRST SECOND THIRD CCS not used

STATIONS USED: NGS (USC & GS) STATE COUNTY OTHER STATION _____ STATION _____

ZONE _____ ELEVATION _____ NORTHINGS (Y) _____ EASTINGS (X) _____

SKETCH: (Include reference tie or witness points, remarks and topo of area)



SURVEYOR'S CERTIFICATE
 No. 3288 THIS CORNER RECORD WAS PREPARED BY ME OR UNDER MY
 EXP. DIRECTION IN CONFORMANCE WITH THE LAND SURVEYORS ACT
 ON July 7 1992
 SIGNED: Donald G. Thomas
 L.S. or R.C.E. No.: 3288

COUNTY SURVEYOR'S CERTIFICATE
 THE CORNER RECORD WAS RECEIVED 7/6
 AND EXAMINED AND FOUND CORRECT 7/6
 BY: Barrell DeJum
 TITLE: Exp. 3-21-99
 DOCUMENT No. _____
 STATEMENT ON BACK OF SHEET: YES NO

