

CORNER RECORD

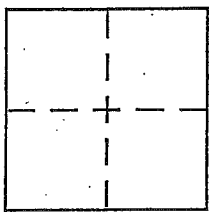
193-082-14

Document Number 194-08-14

City of Bolinas

County of Marin, California

Brief Legal Description Control monuments @ Wharf Road in Bolinas



CORNER TYPE

- Government Corner Control
- Meander Property
- Rancho Other
- Date of Survey _____

COORDINATES (Optional)

N. _____
 E. _____
 Zone _____ NAD27 NAD83
 NAD83 Epoch _____
 Elev. _____
 Vert. Datum: NGVD29 NAVD88
 Meas. Units: Metric Imperial

Corner - Left as found Found and tagged Established Reestablished Rebuilt

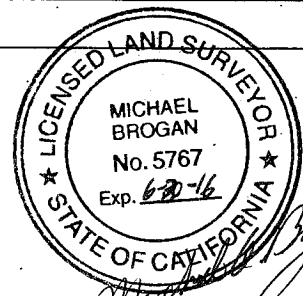
Identification and type of corner found: Evidence used to identify or procedure used to establish or reestablish the corner:
Found Railroad Spike Per the Record of Survey as shown (over)
2005 in 195

A description of the physical condition of the monument as found and as set or reset:
Rebuilt Railroad Spikes after Pavement Reconstruction
as Standard County monuments

SURVEYOR'S STATEMENT

This Corner Record was prepared by me or under my direction in conformance with the Land Surveyor's Act on April 27, 2015

Signed Michael G. Brogan P.L.S. or R.C.E. No. LS 5767



COUNTY SURVEYOR'S STATEMENT

This Corner Record was received APRIL 27, 2015

and examined and filed APRIL 27, 2015

Signed Richard G. Simonitch P.L.S. or R.C.E. No. 7821

Title DEPUTY



County Surveyor's Comment _____

RAILROAD SPIKE REPLACED WITH
 COUNTY STANDARD MONUMENT

2005 RS 195

WHARF ROAD

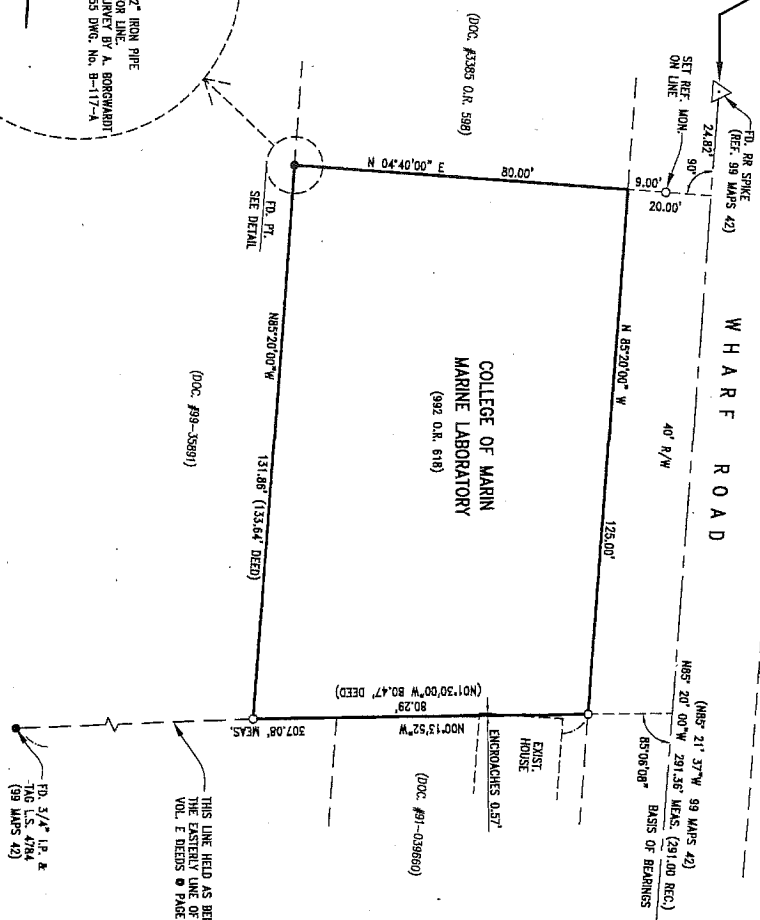
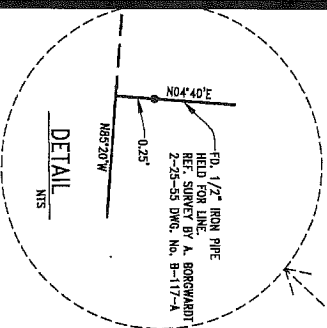
COLLEGE OF MARIN
 MARINE LABORATORY

FORMER LOCATION OF RAILROAD SPIKE
 BEARING N33° 54' 25" E 0.12'
 FROM THE PUNCH MARK IN THE
 CENTER OF THE MONUMENT

DETAIL



RAILROAD SPIKE REPLACED WITH
 COUNTY STANDARD MONUMENT



THIS LINE HELD AS BEING
 THE EASTERLY LINE OF
 VOL. E DEEDS PAGE 490
 (99 MAPS 42)

LEGEND:

- SET 3/4" IRON PIPE AND TAG L.S. 3303
- FOUND POINT AS DESCRIBED

BASIS OF BEARING

THE BASIS OF BEARING FOR THIS MAP IS TAKEN AS N85°20'00" W BETWEEN
 THE FOUND RR SPIKES AT THE CENTER OF WHARF ROAD AS SHOWN HEREON.
 DISTANCES ARE EXPRESSED IN FEET AND DECIMALS THEREOF.

SURVEYOR'S STATEMENT

THIS MAP CORRECTLY REPRESENTS A SURVEY MADE BY ME, OR UNDER MY DIRECTION, IN
 CONFORMANCE WITH THE REQUIREMENTS OF THE PROFESSIONAL LAND SURVEYOR'S ACT, AT THE
 REQUEST OF BOULINAS, CALIFORNIA.

IN WITNESS WHEREOF,
 I, **John G. Stuber**,
 Lic. Exp. Date: 6-30-08



RECORD OF SURVEY
COLLEGE OF MARIN
MARINE LABORATORY
 BOOK 992 O.R. PAGE 618
 MARIN COUNTY CALIFORNIA
 APRIL 4, 2005

CSW
CSW/STUBER-STROEH
ENGINEERING GROUP, INC.
 CONSULTING ENGINEERS
 790 DeLong Ave., Novato, CA 94945-3246
 (415) 892-4763 FAX (415) 892-4502

COUNTY SURVEYOR'S STATEMENT

THIS MAP HAS BEEN EXAMINED IN ACCORDANCE WITH SECTION 8786 OF THE PROFESSIONAL LAND
 SURVEYOR'S ACT,
 THIS 21ST DAY OF JULY, 2005.



COUNTY RECORDER'S STATEMENT

FILED THIS 25TH DAY OF JULY, 2005 AT 10:02 A.M. IN BOOK 2005 OF
 MAPS AT PAGE 185, AT THE REQUEST OF THE COUNTY OF MARIN DEPARTMENT OF PUBLIC WORKS
 SERIAL NO. 2005-00552547-EE \$7.00

County Recorder
 [Signature]
 BY DEPUTY COUNTY RECORDER