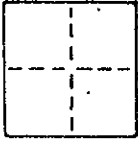


### CORNER RECORD

COUNTY OF Marin T. \_\_\_\_\_ R. \_\_\_\_\_ MERIDIAN \_\_\_\_\_ CALIFORNIA

CORNER TYPE: GOVT. CORNER  MEANDER  RANCHO  CONTROL  OTHER

CORNER IDENTIFICATION — DATE OF VISIT \_\_\_\_\_ 19\_\_



CORNER — LEFT AS FOUND  FOUND AND TAGGED  REESTABLISHED ORBLITERATED CORNER  REBUILT

**PHYSICAL DESCRIPTION OF CORNER FOUND; EVIDENCE AND METHOD USED TO IDENTIFY OR REESTABLISH**

Found the remains of a 2"X2" hub at the southerly terminus of the course "N 62° 18' W 291.14' per Book 6 of Parcel Maps at Page 5, Marin County Records, accepted as the set 2"X2" hub and tag "LS 2654" per said map. Set a 3/4 inch iron pipe with plastic plug embossed "LS 3775" to perpetuate said found point.

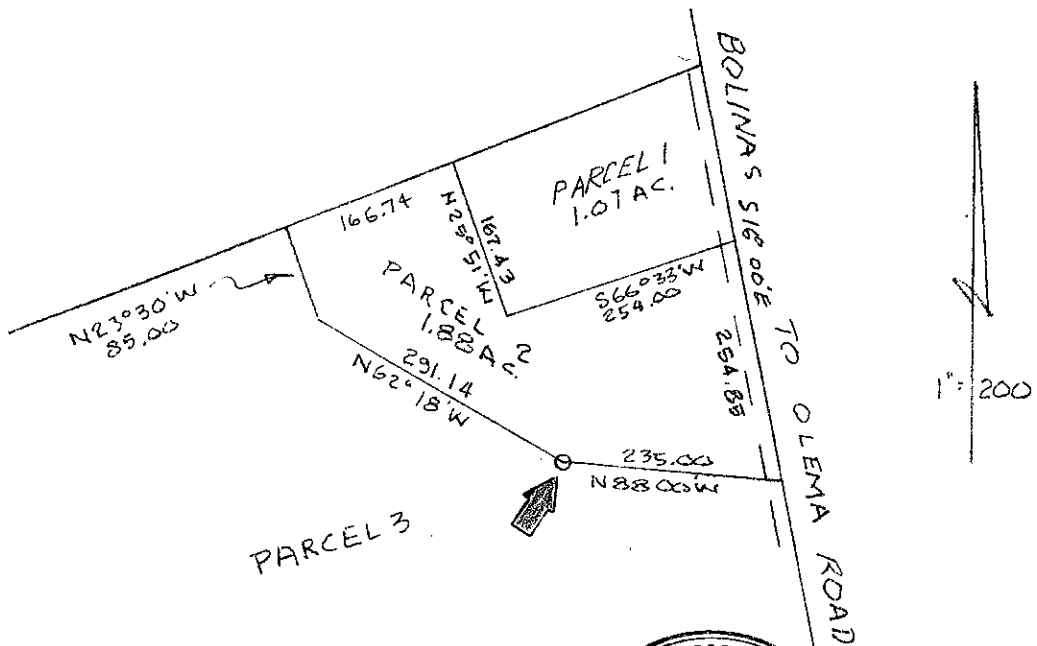
**PHYSICAL DESCRIPTION OF MONUMENTS REBUILT OR PERPETUATED**

As shown.

AP 193-020-31&35  
Murch J-1529

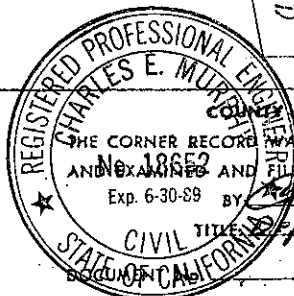
CALIFORNIA COORDINATE SYSTEM ORDER: FIRST  SECOND  THIRD   
STATIONS USED: NGS (USC & GS)  STATE  COUNTY  OTHER  STATION \_\_\_\_\_ STATION \_\_\_\_\_  
ZONE \_\_\_\_\_ ELEVATION \_\_\_\_\_ NORTHINGS (Y) \_\_\_\_\_ EASTINGS (X) \_\_\_\_\_

SKETCH: (Include reference tie or witness points, remarks and topo of area)



SURVEYOR'S CERTIFICATE  
THIS CORNER RECORD WAS PREPARED BY ME UNDER MY DIRECTION IN CONFORMANCE WITH THE SURVEYORS ACT ON 18 December 1986

SIGNED: \_\_\_\_\_  
L.S. or R.C.E. No. \_\_\_\_\_



COUNTY SURVEYOR'S CERTIFICATE  
THE CORNER RECORD WAS RECEIVED 12-29 1986  
AND EXAMINED AND FILED 1-13 1987  
Exp. 6-30-89 BY \_\_\_\_\_  
CIVIL TITLE \_\_\_\_\_  
Deputy County Surveyor

STATEMENT ON BACK OF SHEET

YES  NO