

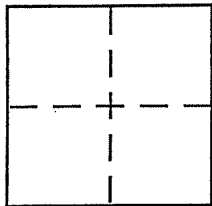
**CORNER RECORD**

Document Number APN 192-261-04

City of BOLINAS

County of MARIN, California

Brief Legal Description LOTS 142-154 5 RM 44, APN 192-261-04



**CORNER TYPE**

Government Corner  Control   
Meander  Property   
Rancho  Other   
Date of Survey \_\_\_\_\_

**COORDINATES (Optional)**

N. \_\_\_\_\_  
E. \_\_\_\_\_  
Zone \_\_\_\_\_ NAD27  NAD83   
NAD83 Epoch \_\_\_\_\_  
Elev. \_\_\_\_\_  
Vert. Datum: NGVD29  NAVD88   
Meas. Units: Metric  Imperial

Corner - Left as found  Found and tagged  Established  Reestablished  Rebuilt

Identification and type of corner found: Evidence used to identify or procedure used to establish or reestablish the corner:

Southerly Corners of APN 192-261-04, SW'LY CORNER OF APN 193-171-05, and RR SPIKE as shown were lost in reconstruction of Ocean Parkway / overlook for Slide Repair. Corners were shown on 2010 Maps 47 and 23 05 71, RR SPIKE per 10 05 81

A description of the physical condition of the monument as found and as set or reset:

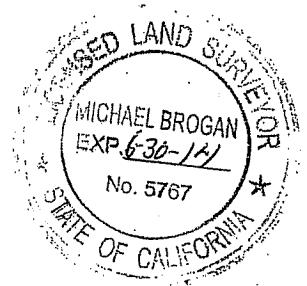
RR Spike was replaced as shown on back sketch

Corners were referenced by offsets as shown on back

**SURVEYOR'S STATEMENT**

This Corner Record was prepared by me or under my direction in conformance with the Land Surveyor's Act on February 7 2012

Signed Michael C. Brogan P.L.S or R.C.E. No. LS 5767



**COUNTY SURVEYOR'S STATEMENT**

This Corner Record was received FEBRUARY 7, 2012

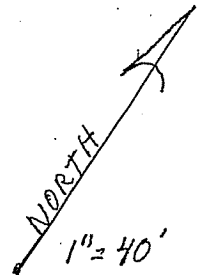
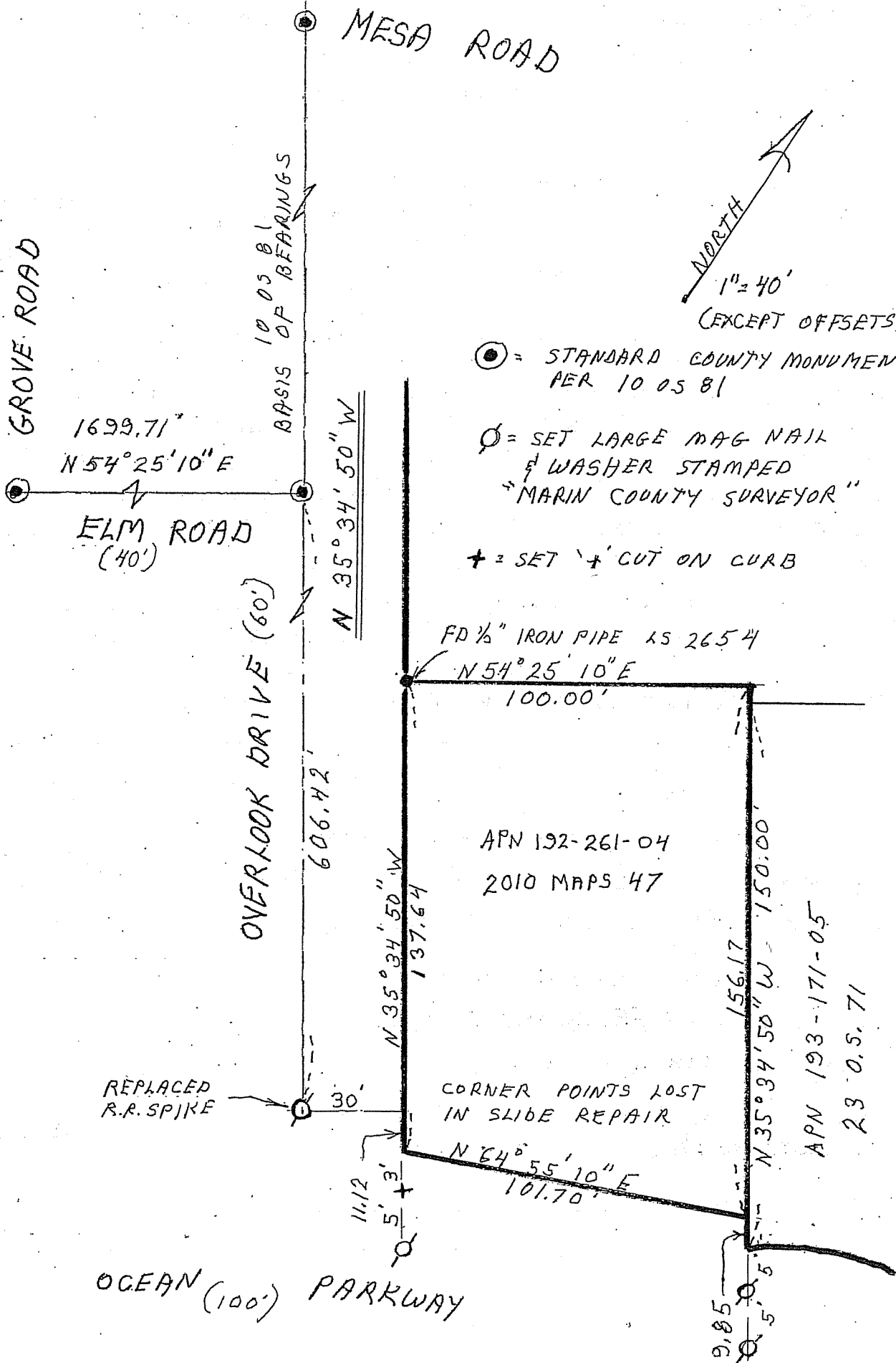
and examined and filed MARCH 6, 2012

Signed \_\_\_\_\_ P.L.S or R.C.E. No. 7128

Title COUNTY SURVEYOR



County Surveyor's Comment \_\_\_\_\_



1" = 40'  
(EXCEPT OFFSETS)

- ⊙ = STANDARD COUNTY MONUMENT PER 10 05 81
- ⊕ = SET LARGE MAG NAIL & WASHER STAMPED "MARIN COUNTY SURVEYOR"
- + = SET '+' CUT ON CURB