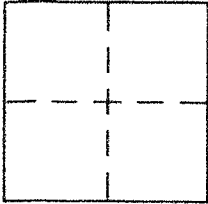


CORNER RECORD

Document Number APN 192-201-21
County of MARIN, California

City of Bolinas

Brief Legal Description lots 1301 thru 1304, 5 R.M. 44 // APN 192-201-21



CORNER TYPE

Government Corner Control
Meander Property
Rancho Other
Date of Survey _____

COORDINATES (Optional)

N. _____
E. _____
Zone _____ NAD27 NAD83
NAD83 Epoch _____
Elev. _____
Vert. Datum: NGVD29 NAVD88
Meas. Units: Metric Imperial

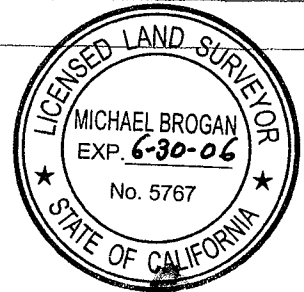
Corner - Left as found Found and tagged Established Reestablished Rebuilt

Identification and type of corner found: Evidence used to identify or procedure used to establish or reestablish the corner:
Survey based on County Record-of-Survey - 10 o.s. 81
See Back

A description of the physical condition of the monument as found and as set or reset:
See Back

SURVEYOR'S STATEMENT

This Corner Record was prepared by me or under my direction in conformance with the Land Surveyor's Act on April 19 2005
Signed Michael A. Brogan P.L.S or R.C.E. No. LS 5767

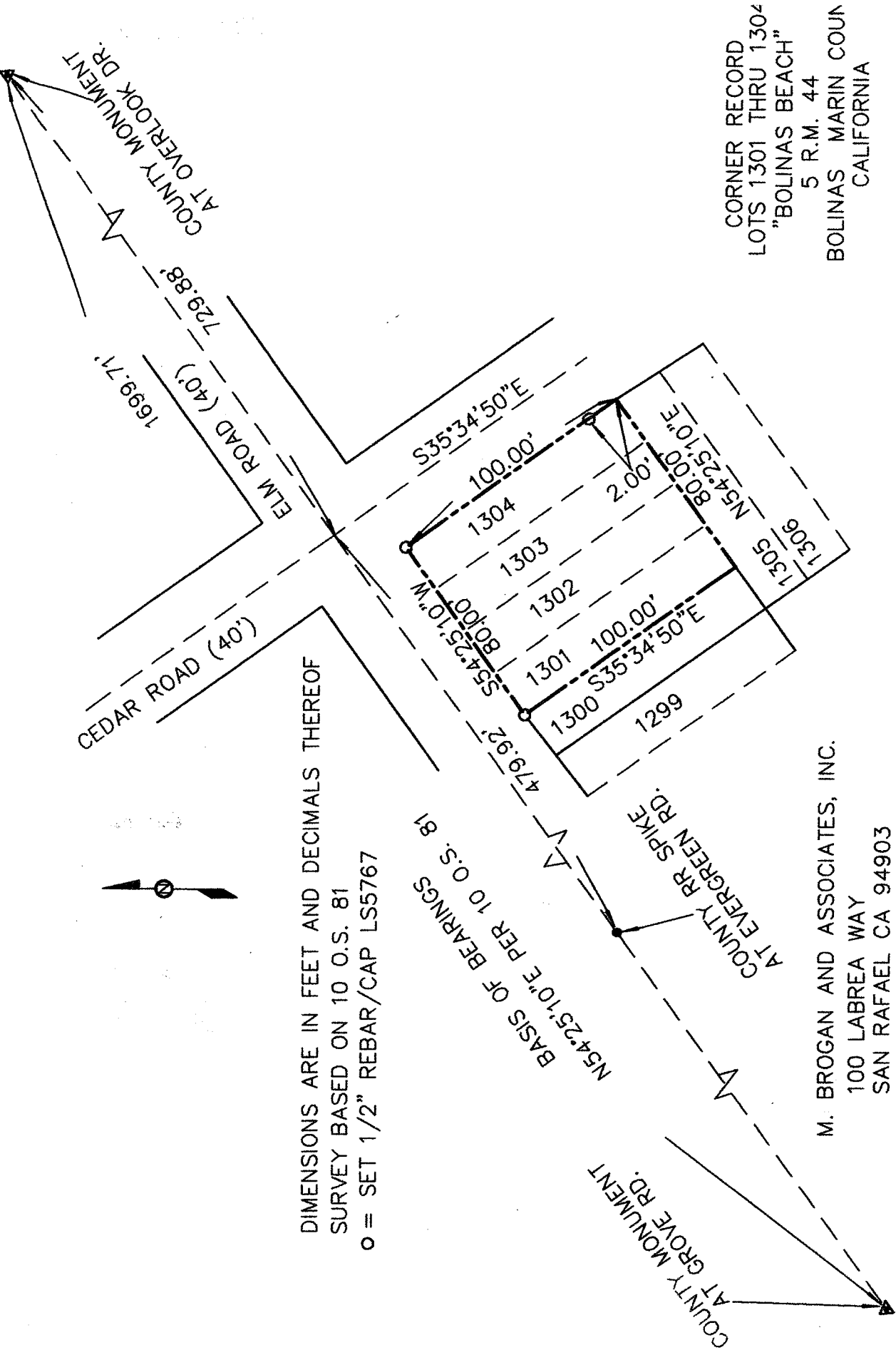


COUNTY SURVEYOR'S STATEMENT

This Corner Record was received 4-21-2005
and examined and filed 6-29-2005
Signed _____ P.L.S or R.C.E. No. 7128
Title COUNTY SURVEYOR



County Surveyor's Comment _____



DIMENSIONS ARE IN FEET AND DECIMALS THEREOF
 SURVEY BASED ON 10 O.S. 81
 o = SET 1/2" REBAR/CAP LS5767

BASIS OF BEARINGS
 N54°25'10"E PER 10 O.S. 81

CORNER RECORD
 LOTS 1301 THRU 1304
 "BOLINAS BEACH"
 5 R.M. 44
 BOLINAS MARIN COUN
 CALIFORNIA

M. BROGAN AND ASSOCIATES, INC.
 100 LABREA WAY
 SAN RAFAEL CA 94903
 JOB NO. 5645 APRIL 2005
 NOT TO SCALE
 APN 192-201-21