



JERRICO ASSOCIATES

7570

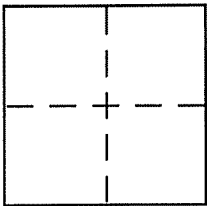
SUITE 27
77 MARK DRIVE
SAN RAFAEL, CA 94903

Document Number 192-162-21

CORNER RECORD

/City of/ Bolinas Mesa County of Marin, California

Brief Legal Description Ptn. Lot 1582 Bolinas Beach 5 RM 44



CORNER TYPE

Government Corner Control
Meander Property
Rancho Other
Date of Survey May 11, 2006

COORDINATES (Optional)

N. _____
E. _____
Zone _____ NAD27 NAD83
NAD83 Epoch _____
Elev. _____
Vert. Datum: NGVD29 NAVD88
Meas. Units: Metric Imperial

Corner - Left as found Found and tagged Established Reestablished Rebuilt

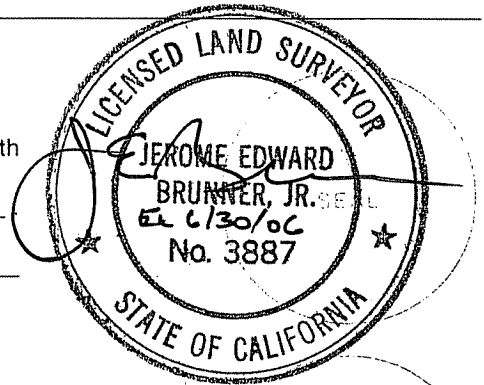
Identification and type of corner found: Evidence used to identify or procedure used to establish or reestablish the corner:
Centerline points on Elm Road by Marin County DPW
as in 10 OS 81

A description of the physical condition of the monument as found and as set or reset: _____
See back of page.... set rebar and cap LS 3887

SURVEYOR'S STATEMENT

This Corner Record was prepared by me or under my direction in conformance with the Land Surveyor's Act on May 11, 2006

Signed [Signature] P.L.S or R.C.E. No. LS 3887



COUNTY SURVEYOR'S STATEMENT

This Corner Record was received MAY 26, 2006

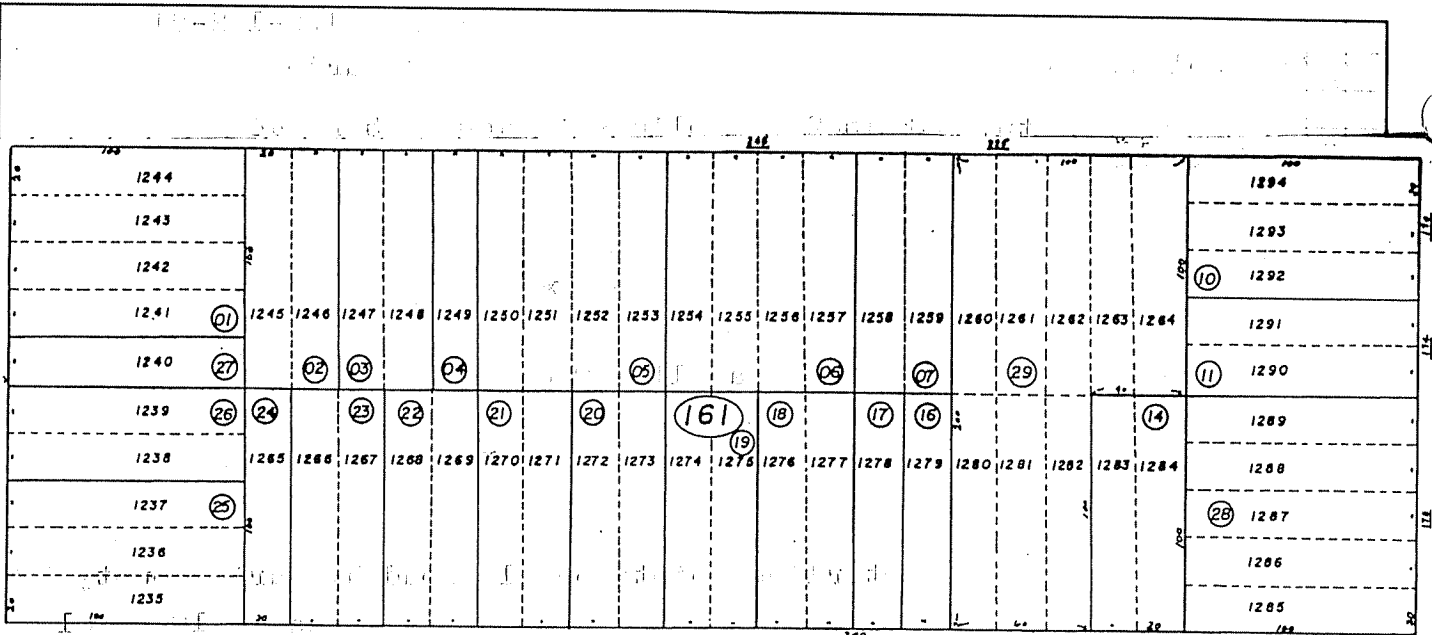
and examined and filed JUNE 8, 2006

Signed [Signature] P.L.S or R.C.E. No. 7128

Title COUNTY SURVEYOR

County Surveyor's Comment _____

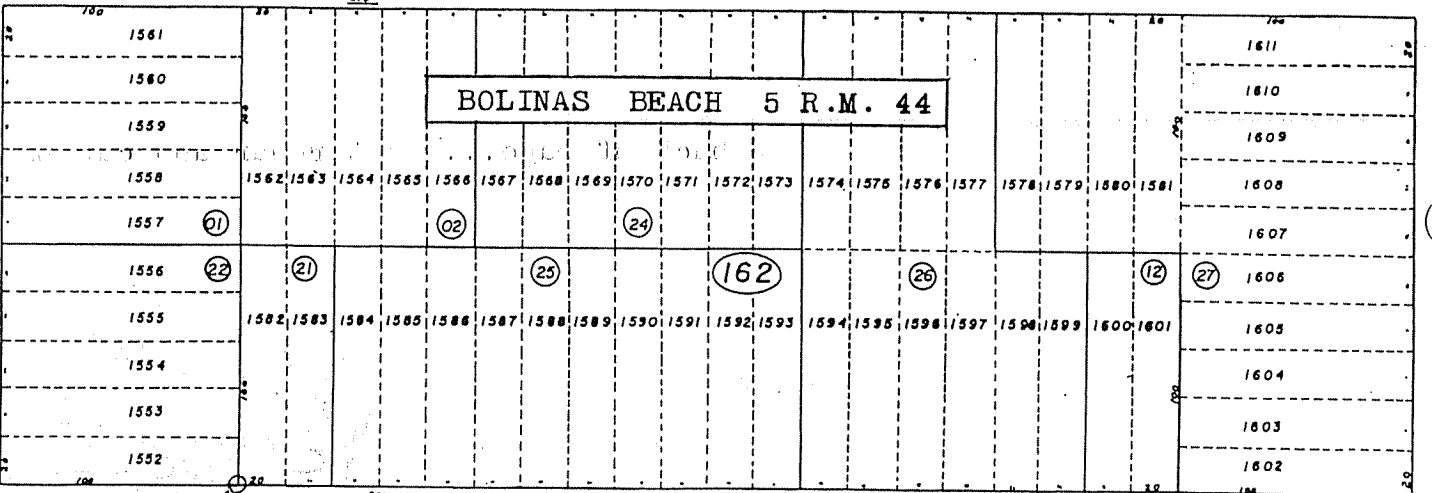




DOGWOOD ROAD

ROAD

M.S.P. 25/02
ROAD



BOLINAS BEACH 5 R.M. 44

ALDER

O.O.S. 81
ELM

EVERGREEN S 35° 34' 50" E ROAD

Fd. Hr

Set rebar & cap LS 3887

Set spike nail

519.89

Spike

as in
10 OS 81

GROVE ROAD

Fd. Std. County Mon.

S 54° 25' 10" W
489.92