



JERRICO ASSOCIATES
 SUITE 27
 77 MARK DRIVE
 SAN RAFAEL, CA 94903

192-162-05, 16 6677

CORNER RECORD

1/3

COUNTY OF Marin T. _____ R. _____ MERIDIAN _____ CALIFORNIA

CORNER TYPE: GOVT. CORNER MEANDER RANCHO CONTROL OTHER

CORNER IDENTIFICATION — DATE OF VISIT _____ 19__



CORNER — LEFT AS FOUND FOUND AND TAGGED REESTABLISHED OBLITERATED CORNER REBUILT

PHYSICAL DESCRIPTION OF CORNER FOUND; EVIDENCE AND METHOD USED TO IDENTIFY OR REESTABLISH

Survey monumentation derived from County points on Elm Rd. and Grove Rd., going Northerly on Elm. (10 O.S. 81)

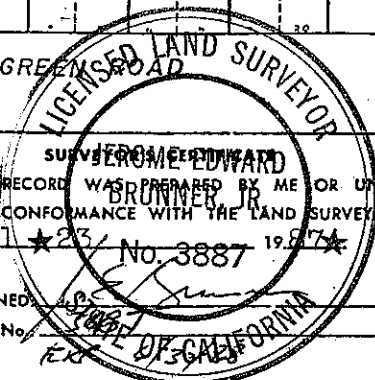
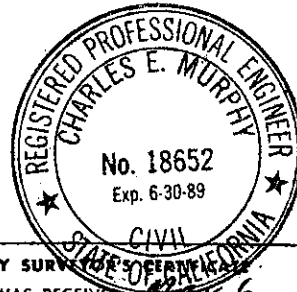
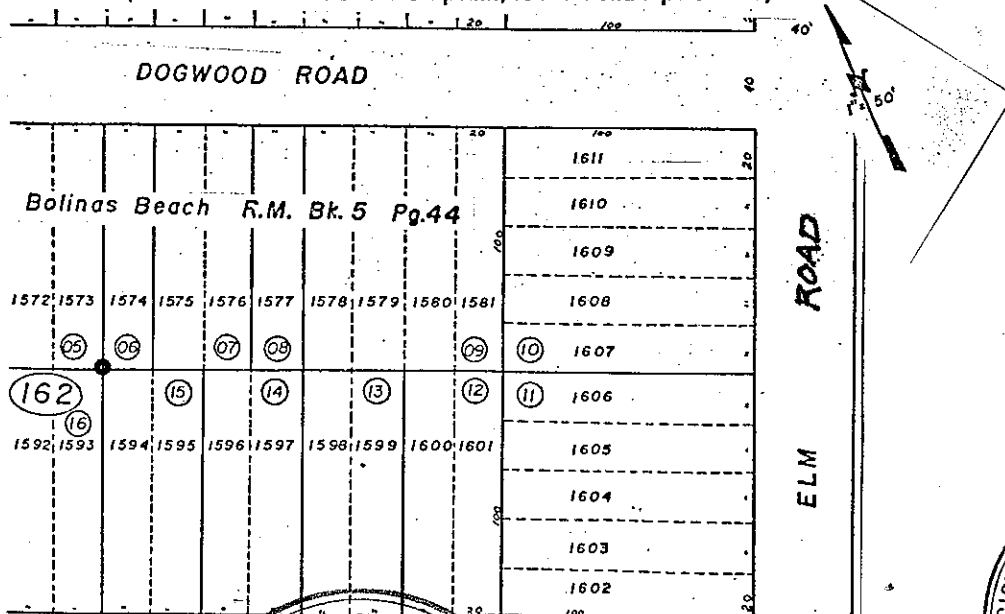
Bolinas Beach 5 R.M. 44

PHYSICAL DESCRIPTION OF MONUMENTS REBUILT OR PERPETUATED

• Set rebar and cap L.S. 3887

CALIFORNIA COORDINATE SYSTEM ORDER: FIRST SECOND THIRD
 STATIONS USED: NGS (USC & GS) STATE COUNTY OTHER STATION _____ STATION _____
 ZONE _____ ELEVATION _____ NORTHINGS (Y) _____ EASTINGS (X) _____

SKETCH: (Include reference tie or witness points, remarks and topo of area)



THIS CORNER RECORD WAS PREPARED BY ME OR UNDER MY DIRECTION IN CONFORMANCE WITH THE LAND SURVEYORS ACT ON April 23 1987 No. 3887

SIGNED _____
 L.S. or R.C.S. No. _____

COUNTY SURVEYOR'S RECEIPT
 THE CORNER RECORD WAS RECEIVED May 6 1987
 AND EXAMINED AND FILED May 12 1987
 BY Charles E. Murphy
 TITLE: Deputy County Surveyor

DOCUMENT No. _____
 STATEMENT ON BACK OF SHEET No _____



JERRICO ASSOCIATES
 SUITE 27
 77 MARK DRIVE
 SAN RAFAEL, CA 94903

192-162-05, 16 6677

CORNER RECORD

2/3

COUNTY OF Marin T. _____ R. _____ MERIDIAN _____ CALIFORNIA
 CORNER TYPE: GOV'T. CORNER MEANDER RANCHO CONTROL OTHER
 CORNER IDENTIFICATION — DATE OF VISIT _____ 19____



CORNER — LEFT AS FOUND FOUND AND TAGGED REESTABLISHED OBLITERATED CORNER REBUILT

PHYSICAL DESCRIPTION OF CORNER FOUND; EVIDENCE AND METHOD USED TO IDENTIFY OR REESTABLISH

Survey monumentation derived from County points on Elm Rd.
 and Grove Rd., going Northerly on Elm.
 (10 O.S. 81)

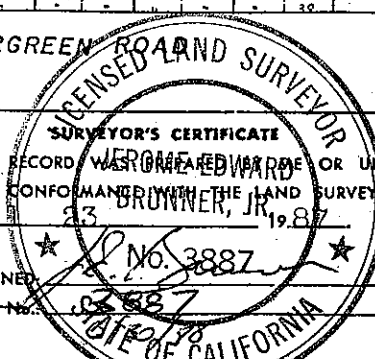
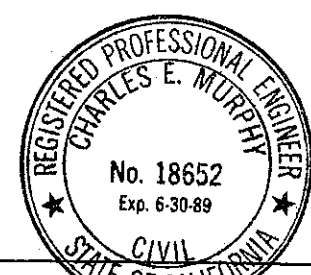
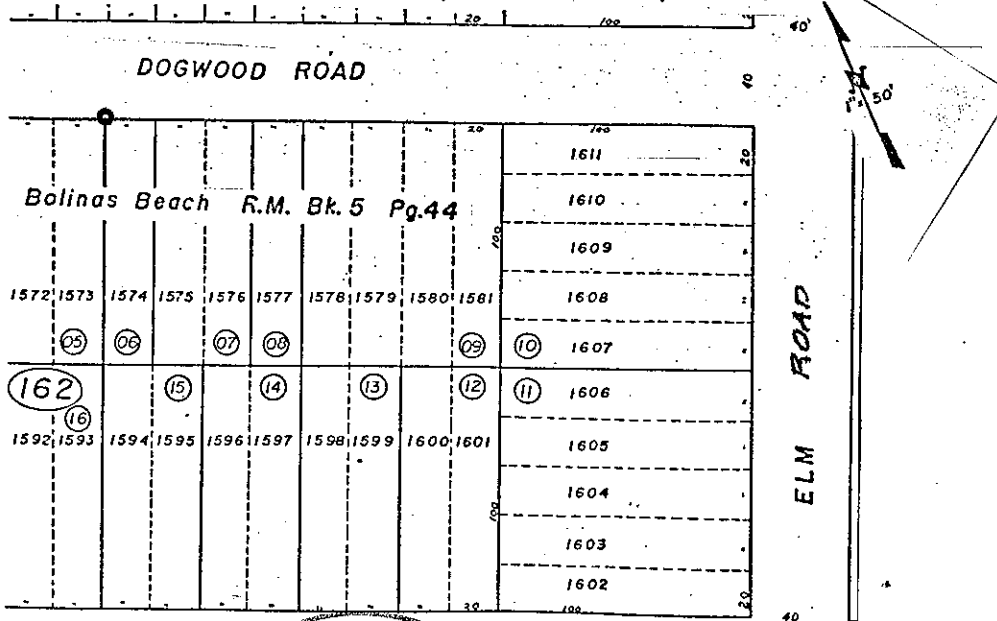
Bolinas Beach 5 R.M. 44

PHYSICAL DESCRIPTION OF MONUMENTS REBUILT OR PERPETUATED

○ Set rebar and cap L.S. 3887

CALIFORNIA COORDINATE SYSTEM ORDER: FIRST SECOND THIRD
 STATIONS USED: NGS (USC & GS) STATE COUNTY OTHER STATION _____ STATION _____
 ZONE _____ ELEVATION _____ NORTHINGS (Y) _____ EASTINGS (X) _____

SKETCH: (Include reference tie or witness points, remarks and topo of area)



THIS CORNER RECORD WAS RECORDED OR UNDER MY DIRECTION IN CONFORMANCE WITH THE LAND SURVEYORS ACT ON April 23 1987

SIGNED [Signature] No. 3887
 L.S. or R.C.E. No. 3887

COUNTY SURVEYOR'S CERTIFICATE
 THE CORNER RECORD WAS RECEIVED May 6 1987
 AND EXAMINED AND FILED May 12 1987
 BY Charles E. Murphy
 TITLE: Deputy County Surveyor

DOCUMENT No. _____

STATEMENT ON BACK OF SHEET N 0



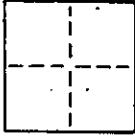
JERRICO ASSOCIATES
 SUITE 27
 77 MARK DRIVE
 SAN RAFAEL, CA 94903

192-162-05, 16 6677

CORNER RECORD

3/3

COUNTY OF Marin T. _____ R. _____ MERIDIAN CALIFORNIA
 CORNER TYPE: GOVT. CORNER MEANDER RANCHO CONTROL OTHER
 CORNER IDENTIFICATION — DATE OF VISIT _____ 19____



CORNER — LEFT AS FOUND FOUND AND TAGGED REESTABLISHED OBLITERATED CORNER REBUILT

PHYSICAL DESCRIPTION OF CORNER FOUND; EVIDENCE AND METHOD USED TO IDENTIFY OR REESTABLISH

Survey monumentation derived from County points on Elm Rd. and Grove Rd., going Northerly on Elm to Overlook Drive. (10 O.S. 81)

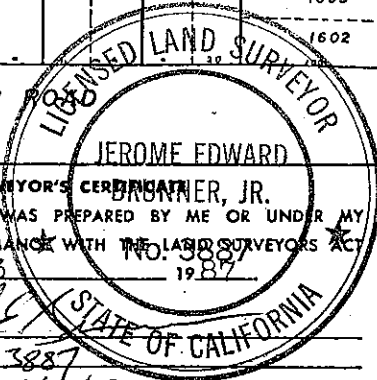
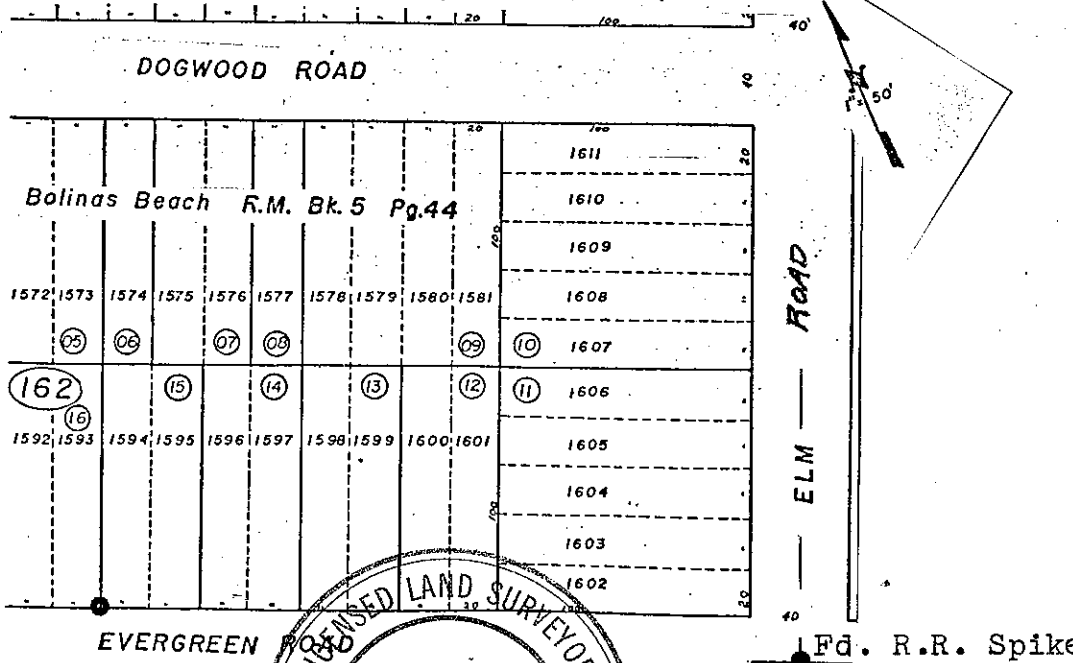
Bolinas Beach 5 R.M. 44

PHYSICAL DESCRIPTION OF MONUMENTS REBUILT OR PERPETUATED

● Set rebar and cap L.S. 3887

CALIFORNIA COORDINATE SYSTEM ORDER: FIRST SECOND THIRD
 STATIONS USED: NGS (USC & GS) STATE COUNTY OTHER STATION _____ STATION _____
 ZONE _____ ELEVATION _____ NORTHINGS (Y) _____ EASTINGS (X) _____

SKETCH: (Include reference tie or witness points, remarks and topo of area)



SURVEYOR'S CERTIFICATE
 THIS CORNER RECORD WAS PREPARED BY ME OR UNDER MY DIRECTION IN CONFORMANCE WITH THE LAND SURVEYORS ACT ON April 23 1987

SIGNED: _____
 L.S. or R.C.E. No.: 3887
6/3/88

COUNTY SURVEYOR'S CERTIFICATE
 THE CORNER RECORD WAS RECEIVED May 6 1987 AND EXAMINED AND FILED May 12 1987 BY Charles E. Murphy TITLE: Deputy County Surveyor

DOCUMENT No. _____
 STATEMENT ON BACK OF SHEET NO