

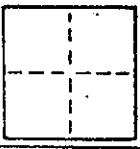
**CORNER RECORD**

1/2

COUNTY OF Marin T. \_\_\_\_\_ R. \_\_\_\_\_ MERIDIAN \_\_\_\_\_ CALIFORNIA

CORNER TYPE: GOVT. CORNER  MEANDER  RANCHO  CONTROL  OTHER

CORNER IDENTIFICATION — DATE OF VISIT \_\_\_\_\_ 19\_\_\_\_



192-151-14

CORNER — LEFT AS FOUND  FOUND AND TAGGED  REESTABLISHED OBLITERATED CORNER  REBUILT

PHYSICAL DESCRIPTION OF CORNER FOUND; EVIDENCE AND METHOD USED TO IDENTIFY OR REESTABLISH

Found County monuments on Elm Road per. 10 O.S. 81

Map of Bolinas Beach 5 R.M. 44 Line of Lot 2009/2010

PHYSICAL DESCRIPTION OF MONUMENTS REBUILT OR PERPETUATED

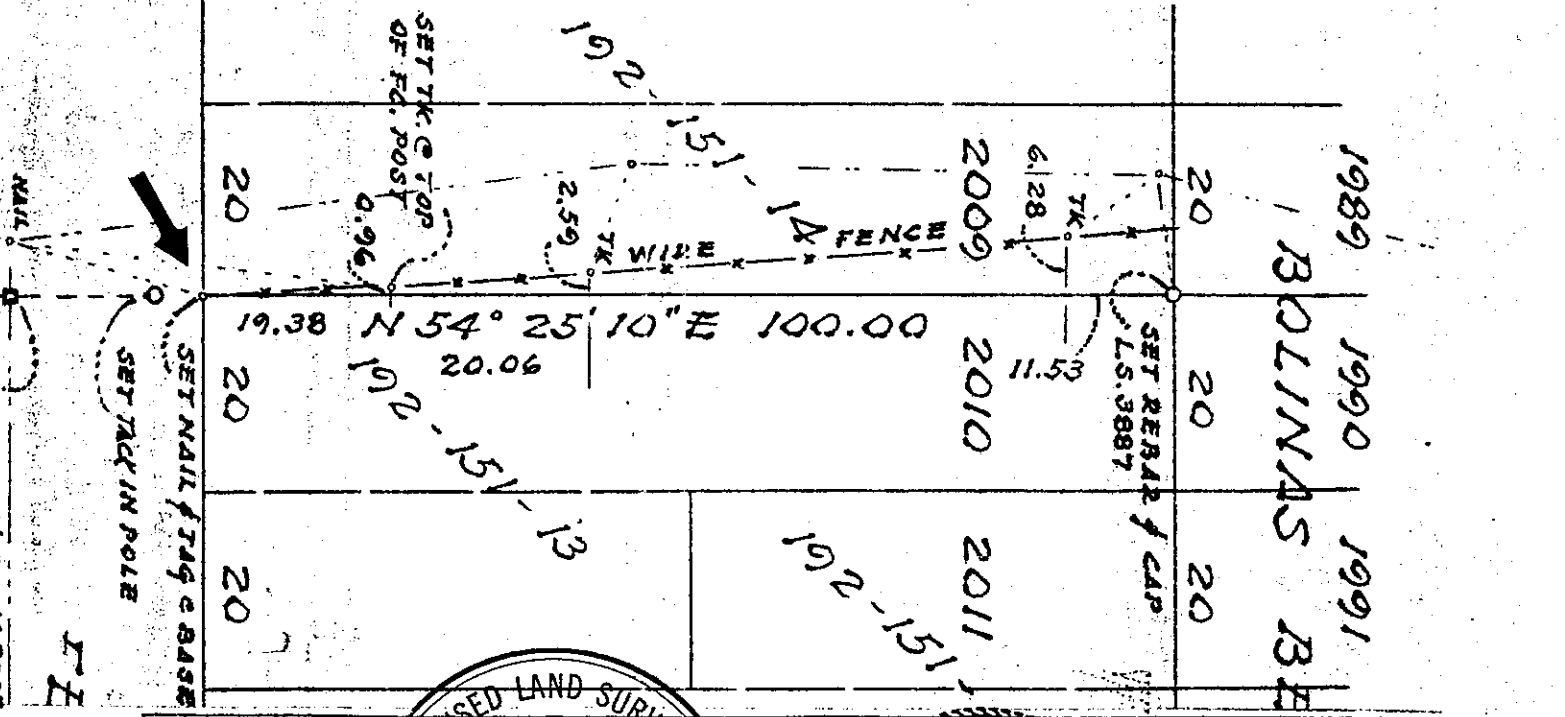
Set nail and tag L.S. 3887 at base of fence in conc. footing.

CALIFORNIA COORDINATE SYSTEM ORDER: FIRST  SECOND  THIRD

STATIONS USED: NGS (USC & GS)  STATE  COUNTY  OTHER  STATION \_\_\_\_\_ STATION \_\_\_\_\_

ZONE \_\_\_\_\_ ELEVATION \_\_\_\_\_ HORTHINGS (Y) \_\_\_\_\_ EASTINGS (X) \_\_\_\_\_

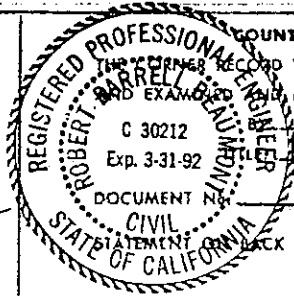
SKETCH: (Include reference tie or witness points, remarks and topo of area)



**SURVEYOR'S CERTIFICATE**  
 THIS CORNER RECORD WAS PREPARED BY ME OR UNDER MY DIRECTION IN CONFORMANCE WITH THE SURVEYORS ACT ON May 18 1989  
 SIGNED: EROME EDWARDS BRUNNER, JR.  
 L.S. or R.C.E. No. L.S. 3887



**COUNTY SURVEYOR'S CERTIFICATE**  
 THIS CORNER RECORD WAS RECEIVED 5/23 1989  
 AND EXAMINED AND FILED 5/21 1989  
 REGISTERED PROFESSIONAL ENGINEER  
 ROBERT BARRETT  
 C 30212  
 Exp. 3-31-92  
 DOCUMENT NO. \_\_\_\_\_  
 CIVIL STATEMENT OF WORK OF SHEET \_\_\_\_\_



YES  NO

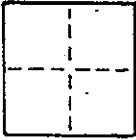
**CORNER RECORD**

2/2

COUNTY OF Marin T. \_\_\_\_\_ R. \_\_\_\_\_ MERIDIAN \_\_\_\_\_ CALIFORNIA

CORNER TYPE: GOVT. CORNER  MEANDER  RANCHO  CONTROL  OTHER

CORNER IDENTIFICATION — DATE OF VISIT \_\_\_\_\_ 19\_\_\_\_



192-151-14

CORNER — LEFT AS FOUND  FOUND AND TAGGED  REESTABLISHED OBLITERATED CORNER  REBUILT

PHYSICAL DESCRIPTION OF CORNER FOUND, EVIDENCE AND METHOD USED TO IDENTIFY OR REESTABLISH

Found County monuments on Elm Road per. 10 O.S. 81

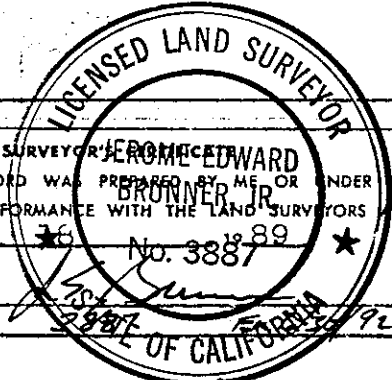
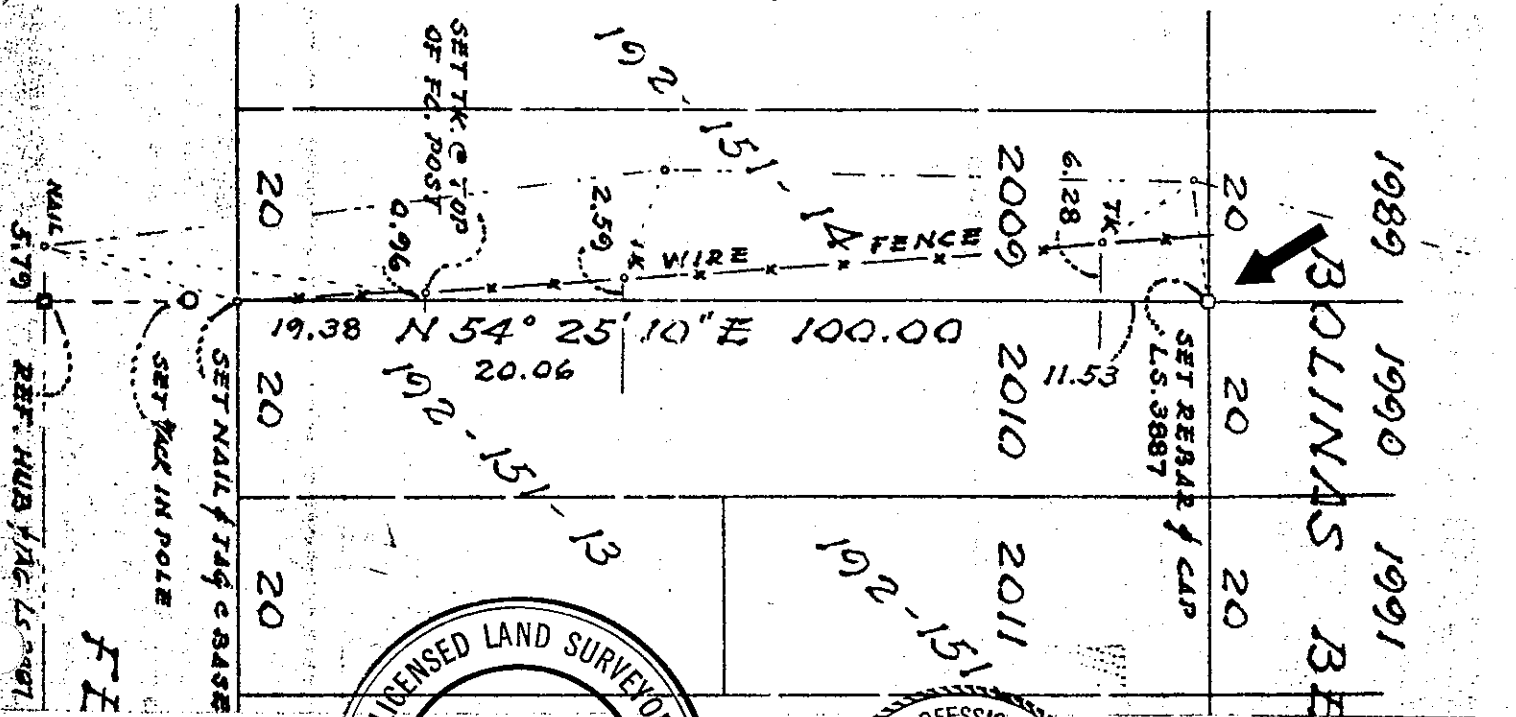
Map of Bolinas Beach 5 R.M. 44 Line of Lot 2009/2010

PHYSICAL DESCRIPTION OF MONUMENTS REBUILT OR PERPETUATED

Set rebar and cap L.S. 3887

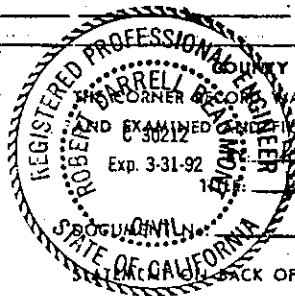
CALIFORNIA COORDINATE SYSTEM ORDER: FIRST  SECOND  THIRD   
 STATIONS USED: NGS (USC & GS)  STATE  COUNTY  OTHER  STATION \_\_\_\_\_  
 ZONE \_\_\_\_\_ ELEVATION \_\_\_\_\_ NORTHINGS (Y) \_\_\_\_\_ EASTINGS (X) \_\_\_\_\_

SKETCH: (Include reference tie or witness points, remarks and topo of area)



SURVEYOR'S CERTIFICATE  
 THIS CORNER RECORD WAS PREPARED BY ME OR UNDER MY DIRECTION IN CONFORMANCE WITH THE LAND SURVEYORS ACT ON MAY 26 1989 No. 3887

SIGNED: \_\_\_\_\_  
 L.S. or R.C.E. No.: \_\_\_\_\_



REGISTERED PROFESSIONAL ENGINEER'S CERTIFICATE  
 THIS CORNER RECORD WAS RECEIVED 5/23 1989  
 AND EXAMINED AND APPROVED S/W 1989  
 Exp. 3-31-92

BACK OF SHEET YES  NO