



JERRICO ASSOCIATES

SUITE 27
77 MARK DRIVE
SAN RAFAEL, CA 94903

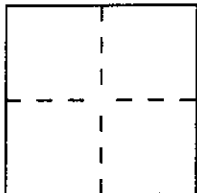
7313

CORNER RECORD

Document Number 192-111-26, 05

City of Bolinas Mesa County of Marin, California

Brief Legal Description N'ly line of lot 1823 and lot 1843
Map of Bolinas Beach 5 RM 44



CORNER TYPE

Government Corner Control
Meander Property
Rancho Other
Date of Survey July 22, 1998

COORDINATES (Optional)

N. _____
E. _____
Zone _____ Datum _____
Elev. _____

Corner — Left as found Found and tagged Established Reestablished Rebuilt

Identification and type of corner found: Evidence used to identify or procedure used to establish or reestablish the corner:

Monumentation from centerline of Elm Road by
County of Marin per 10 OS 81

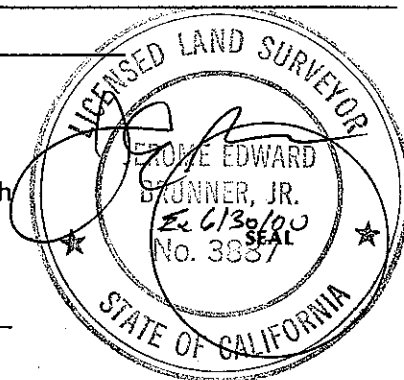
A description of the physical condition of the monument as found and as set or reset:

- (A) Set #5 rebar and cap LS 3887. (B) Set nail and tag LS 3887 in limb of 6" acacia. (C) Set #5 rebar and cap LS 3887.
- (D) Set #5 rebar and cap LS 3887.

SURVEYOR'S STATEMENT

This Corner Record was prepared by me or under my direction in conformance with the Land Surveyors' Act on July 22 1998.

Signed [Signature] L.S. or R.C.E. Number LS 3887



COUNTY SURVEYOR'S STATEMENT

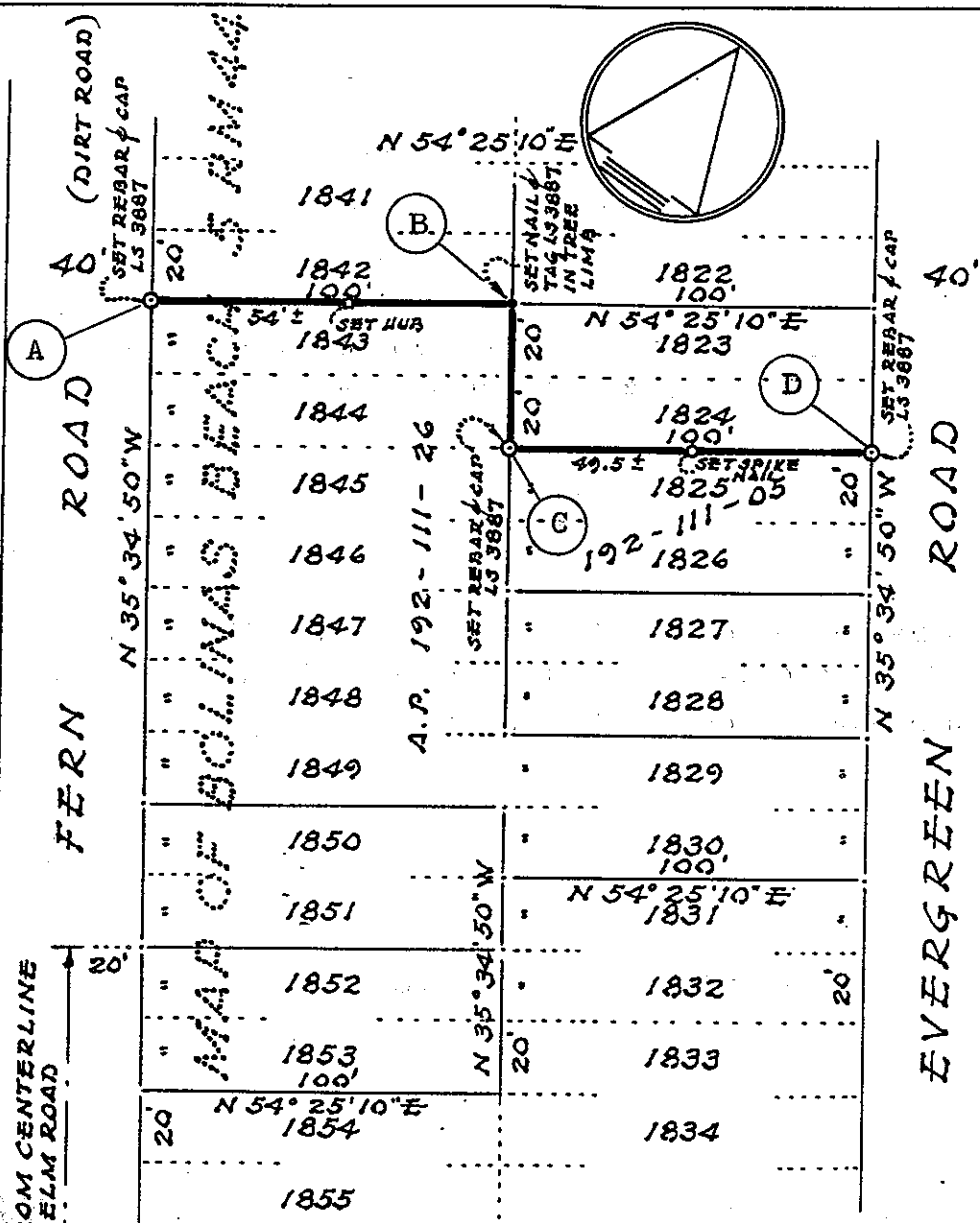
This Corner Record was received AUGUST 4 1998 and examined and filed AUGUST 5 1998.

Signed [Signature] Title DEPUTY



County Surveyor's Comment _____

COUNTY MONUMENTATION ON E OF ELM per 10 O.S. 81



SURVEY NORTHERLY LINE
 A.P. 192-111-26 & 05
 BOLINAS CALIFORNIA

JULY 1998

JERRICO ASSOCIATES 77 MARK DR. SAN RAFAEL, CA.

S-7313