

CORNER RECORD

Document Number APN 192-071-01,02,15 & 16

City of BOLINAS County of Marin California.

Brief Legal Description: LOTS 1749-1758, 1779-1783, & 1759-1763; MAP OF BOLINAS BEACH RM BK 5 P 44 Mm. Co Rcds.

CORNER TYPE:

Government Corner Control
 Meander Property
 Rancho Other
 Date of Survey _____

COORDINATES

[Optional]
 N > _____
 E > _____
 Zone _____ Datum _____
 Elev > _____

CORNER:----- Left as found Found & Tagged Established Reestablished Rebuilt

Identification & Type of Corner Found: Evidence used to identify or procedure used to establish or reestablish the corner:

FOUND MONUMENTS AS SHOWN ON REVERSE

A description of the physical condition of the monument as found and as set or reset:

SET 5/8" REBAR & CAP, RCE# 18200, AT LOCATIONS SHOWN ON REVERSE.

SURVEYOR'S STATEMENT

The corner record was prepared by me or under my direction in conformance with the Land Surveyors' Act on NOV 2000

Signed : Douglas J. Matteson LS or RCE # 18200



COUNTY SURVEYORS STATEMENT

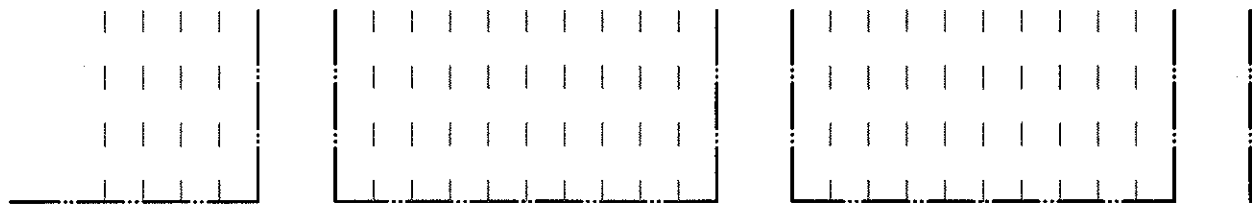
This corner record was received: JULY 12, 2001

and filed JULY 13 2001

Signed _____ Title: DEPUTY

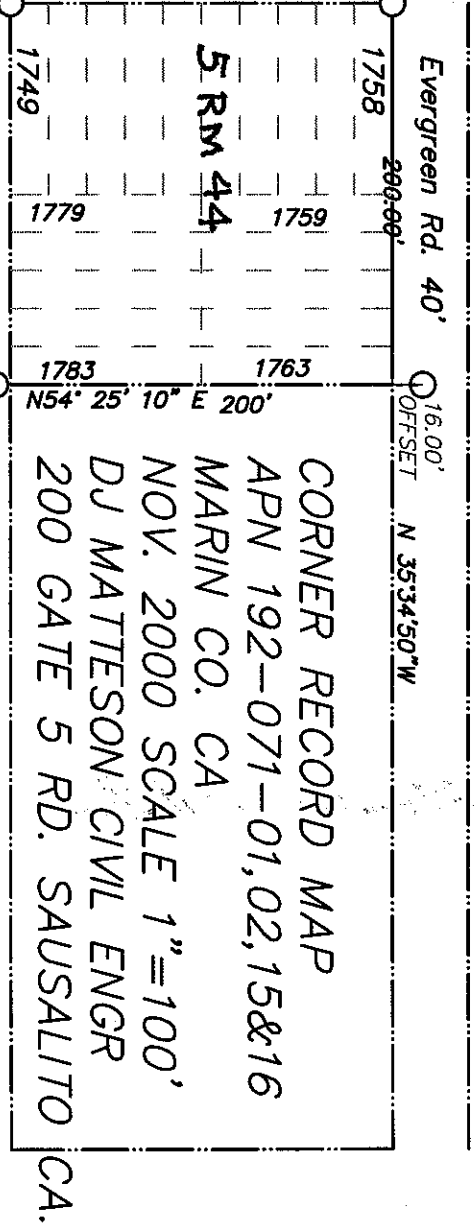


COUNTY SURVEYOR'S COMMENT



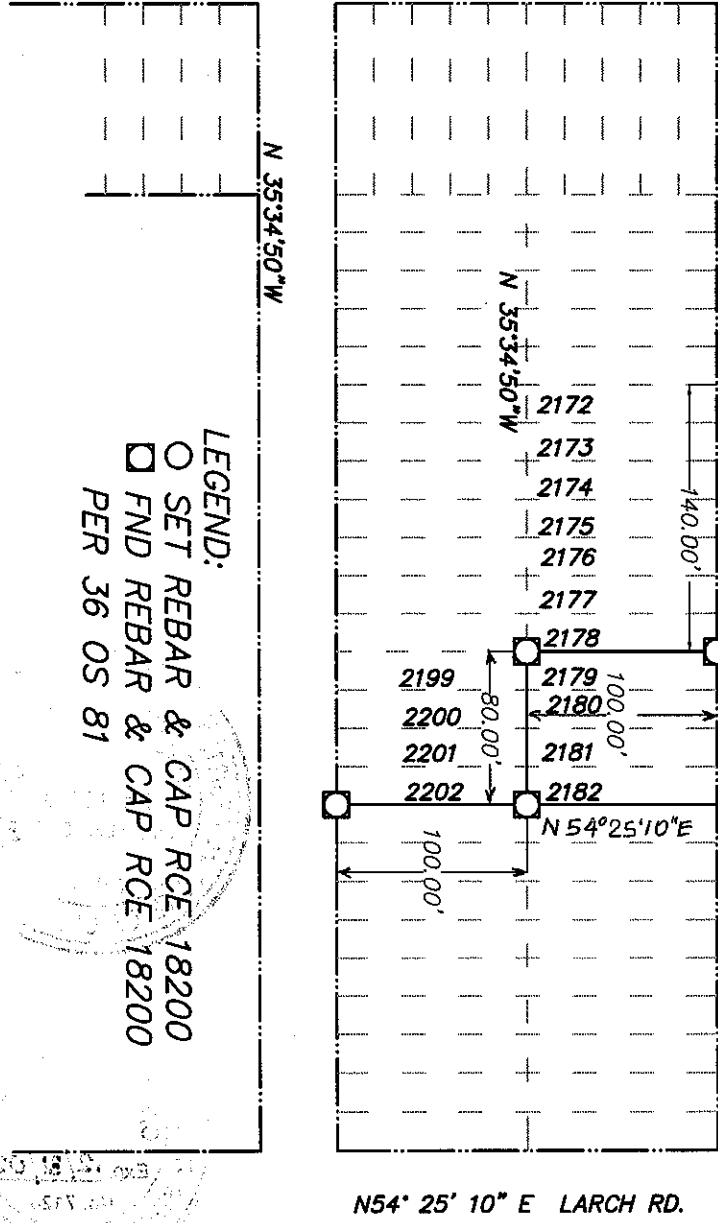
Poplar Rd. 40'

N54° 25' 10" E 200'



5 RM 44

CORNER RECORD MAP
 APN 192-071-01,02,15&16
 MARIN CO. CA
 NOV. 2000 SCALE 1"=100'
 DJ MATTESON CIVIL ENGR
 200 GATE 5 RD. SAUSALITO CA.



N54° 25' 10" E LARCH RD.

LEGEND:
 ○ SET REBAR & CAP RCE 18200
 ◻ FND REBAR & CAP RCE 18200
 PER 36 OS 81

