

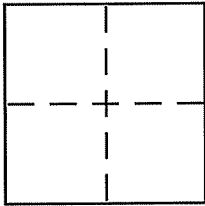
CORNER RECORD

Document Number APN 191-241-21 & 28

City of BOLINAS

County of MARIN, California

Brief Legal Description LOTS 4458 to 4460 AND 4420 to 4423, SRM 44



CORNER TYPE

Government Corner Control
Meander Property
Rancho Other
Date of Survey SEPT 2011

COORDINATES (Optional)

N. _____
E. _____
Zone _____ NAD27 NAD83
NAD83 Epoch _____
Elev. _____
Vert. Datum: NGVD29 NAVD88
Meas. Units: Metric Imperial

Corner - Left as found Found and tagged Established Reestablished Rebuilt

Identification and type of corner found: Evidence used to identify or procedure used to establish or reestablish the corner:

SEE PAGE 2. FOUND ORIGINAL IRON PIPE @ NYMPH RD, HELD.
FOUND 3"x3" CONC MON @ KALE RD, HELD FOR LINE.

A description of the physical condition of the monument as found and as set or reset: _____

SEE PAGE 2.

SURVEYOR'S STATEMENT

This Corner Record was prepared by me or under my direction in conformance with the Land Surveyor's Act on SEPTEMBER 12 2011

Signed [Signature] P.L.S or R.G.E. No. 7950



COUNTY SURVEYOR'S STATEMENT

This Corner Record was received SEPTEMBER 16, 2011

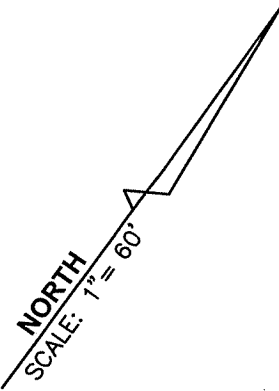
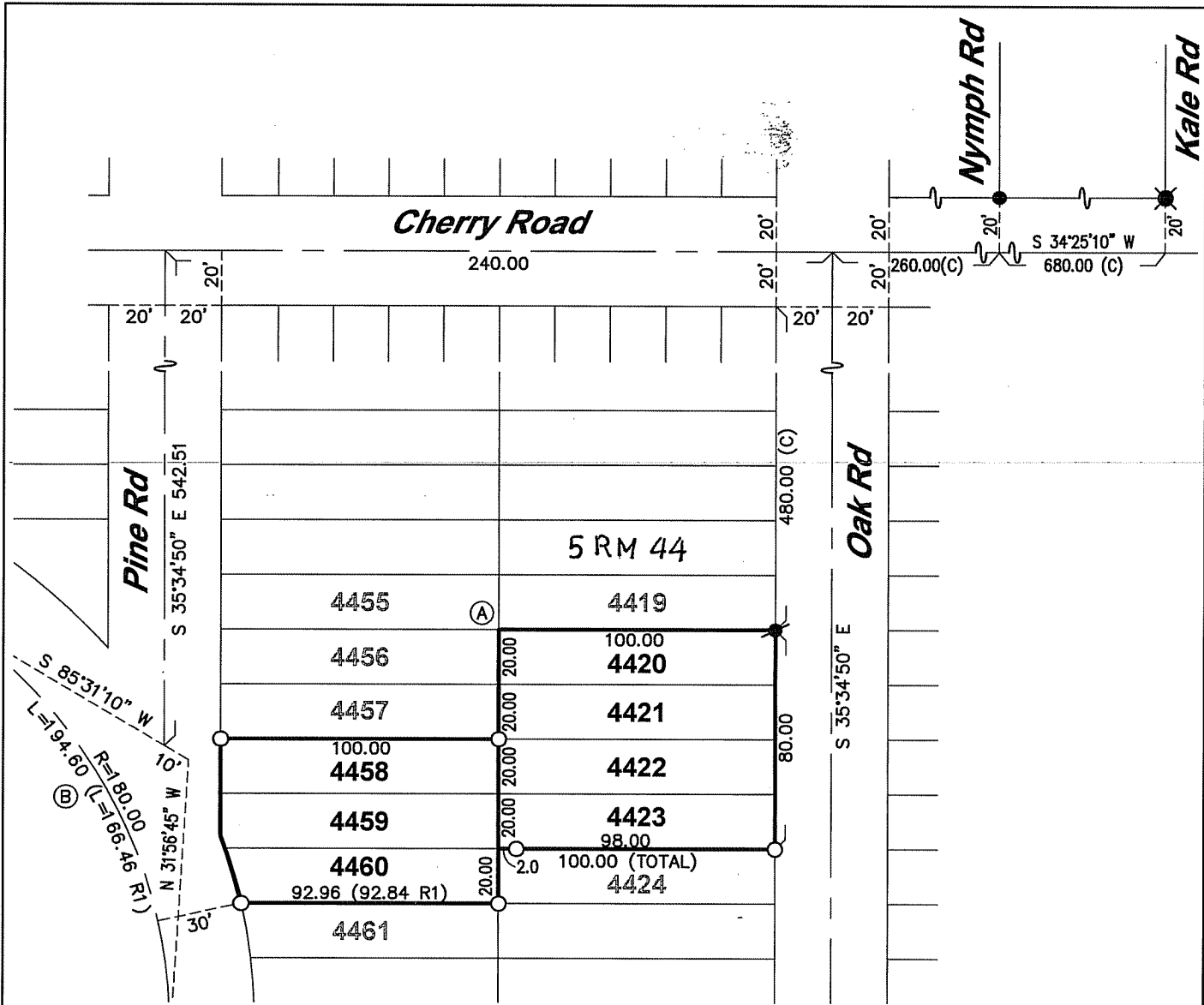
and examined and filed SEPTEMBER 28, 2011

Signed [Signature] P.L.S or R.G.E. No. 7128

Title COUNTY SURVEYOR



County Surveyor's Comment _____



LEGEND

- FOUND 2" IRON PIPE
- FOUND 5/8" REBAR IN CONCRETE, NO TAG
- ⊗ FOUND 3"X3" CONCRETE MONUMENT WITH NAIL
- SET 5/8" REBAR WITH YELLOW CAP, PLS 7950
- (A) CORNER NOT SET DUE TO HEAVY BRUSH
- (B) LENGTH OF CURVE IS INCORRECT ON RECORD MAP

STEVEN J. LAFRANCHI & ASSOCIATES, INC. R1 5 RM 44
CIVIL ENGINEERS ~ LAND SURVEYORS ~ LAND PLANNERS

PETALUMA THEATRE SQUARE
 140 SECOND STREET, SUITE 312
 PETALUMA, CALIFORNIA 94952
 707-762-3122 FAX 707-762-3239