



JERRICO ASSOCIATES

7107

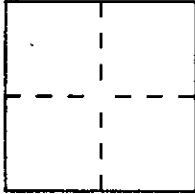
CORNER RECORD

SUITE 27  
77 MARK DRIVE  
SAN RAFAEL, CA 94903

Document Number 191-231-03

City of Bolinas Mesa County of Marin, Califor

Brief Legal Description Lots 4446, 4447, and 4448 Map of Bolinas Beach 5 RM 44



CORNER TYPE

COORDINATES  
(Optional)

Government Corner  Control   
Meander  Property   
Rancho  Other   
Date of Survey Nov. 22, 1994

N. \_\_\_\_\_  
E. \_\_\_\_\_  
Zone \_\_\_\_\_ Datum \_\_\_\_\_  
Elev. \_\_\_\_\_

Corner — Left as found  Found and tagged  Established  Reestablished  Rebuilt

Identification and type of corner found: Evidence used to identify or procedure used to establish or reestablish the corner  
County monument at intersection of Elm and Kale to monument  
Easterly on Elm.

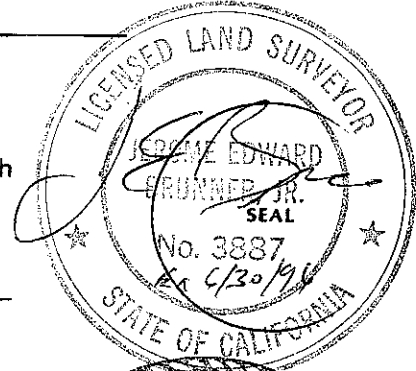
A description of the physical condition of the monument as found and as set or reset: \_\_\_\_\_

- Found pipe and LS 2535 under pine tree.
- Set nail and tag LS 3887 in base of large cypress tree.
- Set #5 rebar and cap LS 3887

SURVEYOR'S STATEMENT

This Corner Record was prepared by me or under my direction in conformance with the Land Surveyors' Act on Nov. 22 19 94.

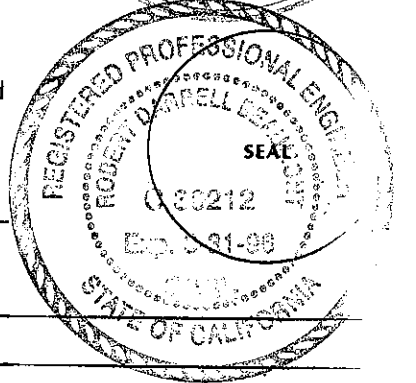
Signed J. Brunner L.S. or R.C.E. Number LS 3887



COUNTY SURVEYOR'S STATEMENT

This Corner Record was received 12-28 19 94 and examined and filed 12-29 19 94

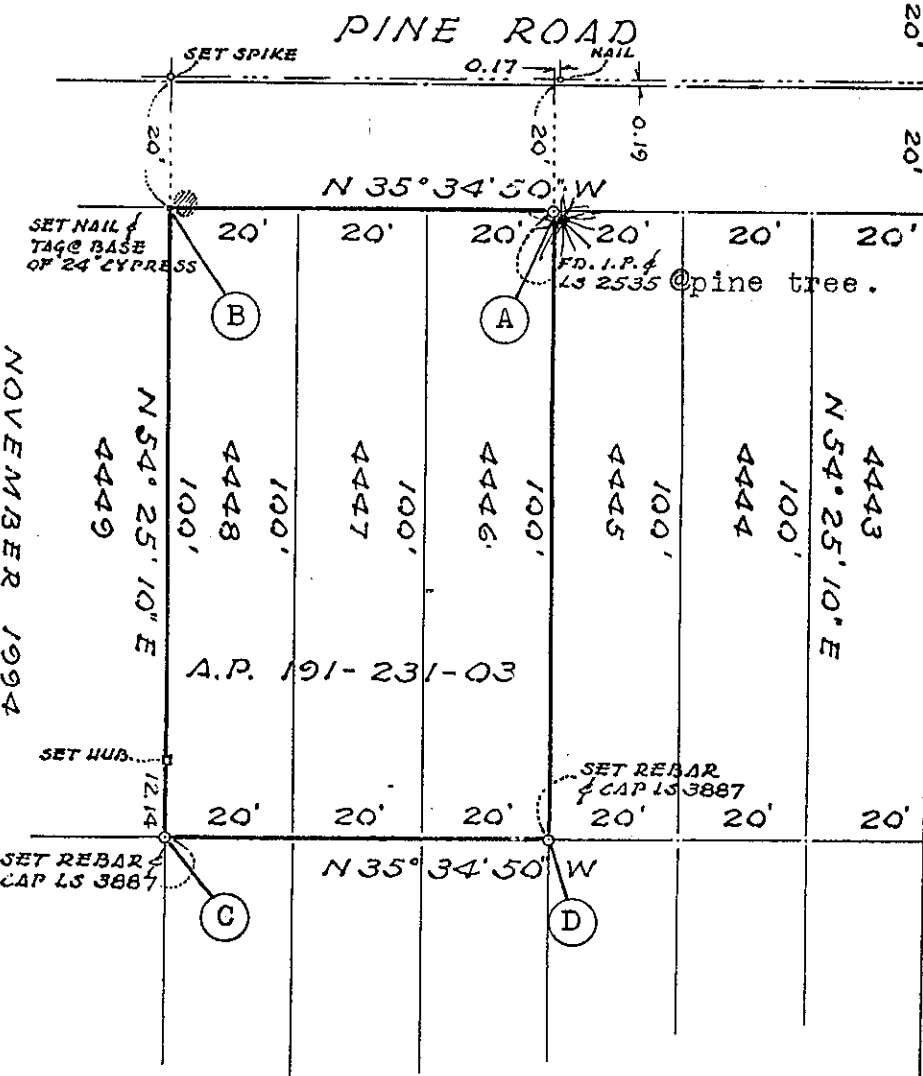
Signed [Signature] Title DES



County Surveyor's Comment \_\_\_\_\_

JERRICO ASSOCIATES 77 MARK DRIVE SAN RAFAEL CALIFORNIA.

NOVEMBER 1994



SURVEY OF A.P. 191-231-03  
 LANDS OF SHOFF  
 LOTS 4446, 4447, 4448  
 BOLINAS BEACH 5 R.M. 44  
 BOLINAS CALIFORNIA.

