

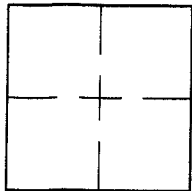
**CORNER RECORD**

Document Number A.P.# 190-191-23,08

City of BOLINAS

County of MARIN, California

Brief Legal Description 5 R.M. 51 BEING LOTS 1089-1094 & 1461-1470



CORNER TYPE		COORDINATES (Optional)	
Government Corner	<input type="checkbox"/>	Control	<input type="checkbox"/>
Meander	<input type="checkbox"/>	Property	<input checked="" type="checkbox"/>
Rancho	<input type="checkbox"/>	Other	<input type="checkbox"/>
Date of Survey	<u>9/8/05</u>		

N. \_\_\_\_\_  
 E. \_\_\_\_\_  
 Zone \_\_\_\_\_ NAD27  NAD83   
 NAD83 Epoch \_\_\_\_\_  
 Elev. \_\_\_\_\_  
 Vert. Datum: NGVD29  NAVD88   
 Meas. Units: Metric  Imperial

Corner- Left as found  Found and tagged  Established  Reestablished  Rebuilt

Identification and type of corner found: Evidence used to identify or procedure used to establish or reestablish the corner:

ESTABLISHED BOUNDARY AND SET PROPERTY CORNERS FROM FOUND

STREET MONUMENTS PER 5 R.M. 51 (SEE SHEET 2)

A description of the physical condition of the monument as found and as set or reset: SEE SHEET 2.

**SURVEYOR'S STATEMENT**

This Corner Record was prepared by me or under my direction in conformance with

the Land Surveyor's Act on OCTOBER 1 2005

Signed Lawrence P. Doyle P.L.S. or R.C.E. No. P.L.S. 4694



**COUNTY SURVEYOR'S STATEMENT**

This Corner Record was received NOVEMBER 29, 2005

and examined and filed DECEMBER 28, 2005

Signed \_\_\_\_\_ P.L.S. or R.C.E. No. 7128

Title COUNTY SURVEYOR

County Surveyor's Comment \_\_\_\_\_



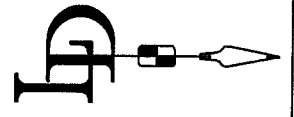
**CORNER RECORD**  
**5 R.M. 51**

BOLINAS MARIN COUNTY CALIFORNIA

SCALE: 1" = 40'  
 DATE: 9/8/05  
 DRAWN BY: JH  
 SHEET 2 OF 2

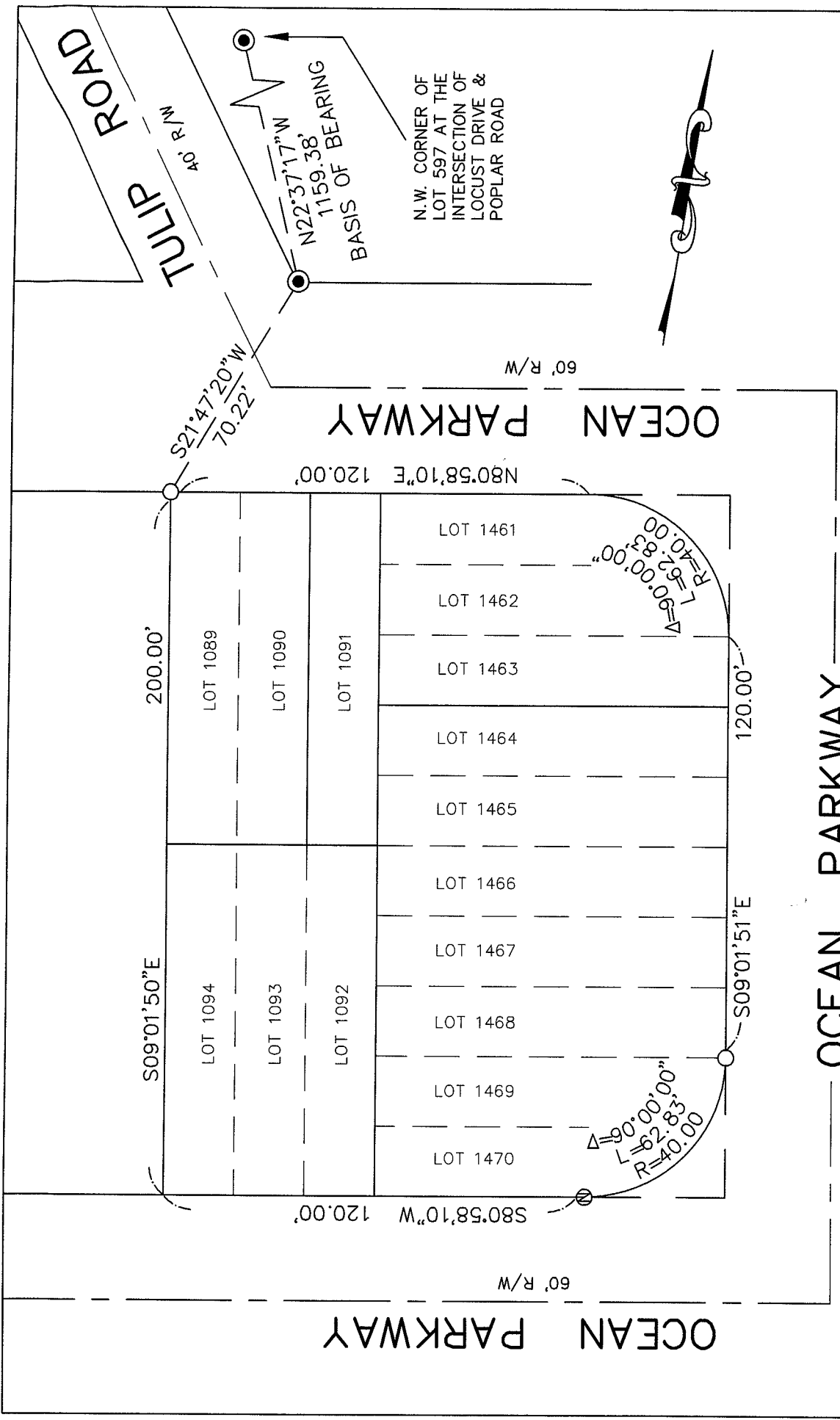
**LAWRENCE P. DOYLE**  
 LAND SURVEYOR/CIVIL ENGINEER  
 P.O. BOX 1609 MILL VALLEY CA 94942 (415-388-9585)

DRAWING NO.  
 1421-05



**BASIS OF BEARING**  
 THE BASIS OF BEARING IS  
 N22°37'17"W BETWEEN FOUND  
 STREET MONUMENTS PER  
 "MAP OF VEREGGIO" 5 R.M. 51

- LEGEND**
- SET 3/4" PIPE & PLUG P.L.S.4694
  - FOUND STREET MONUMENT
  - ⊙ SET NAIL & TAG P.L.S.4694



**OCEAN PARKWAY**  
 60' R/W

**TULIP ROAD**  
 40' R/W

**OCEAN PARKWAY**  
 60' R/W

**OCEAN PARKWAY**  
 60' R/W