

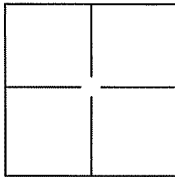
CORNER RECORD

Document Number A.P.N. 190-151-21

City of Bolinas

County of Marin, California

Brief Legal Description Lands of Broek, 350 Juniper Road, DN 2007-0036826.



CORNER TYPE

Government Corner Control
Meander Property
Rancho Other

Date of Survey 19 June 2012

COORDINATES(Optional)

N. _____
E. _____
Zone _____ NAD27 NAD83
NAD83 Epoch _____
Elev. _____
Vert. Datum: NGVD29 NADV88
Meas. Units: Metric Imperial

Corner - Left as found Found and tagged Established Reestablished Rebuilt

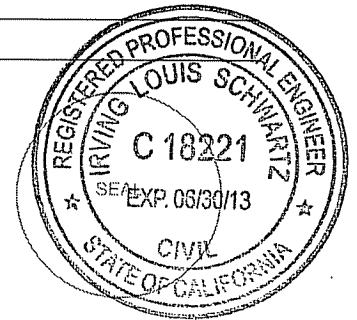
Identification and type of corner found: Evidence used to identify or procedure used to establish or reestablish the corner:
Found 1/2" Rebar and Yellow Cap L.S. 5767 (2) per 2005 RS 086.

A description of the physical condition of the monument as found and as set or reset: _____
Set Most Northerly, Most Southerly and Most Westerly (3 corners) and one on Southeasterly line,
See Exhibit A.

SURVEYOR'S STATEMENT

This Corner Record was prepared by me or under my direction in conformance with
the Land Surveyor's Act on JUNE 20, 2012

Signed [Signature] P.L.S. or R.C.E. No.: 18221



COUNTY SURVEYOR'S STATEMENT

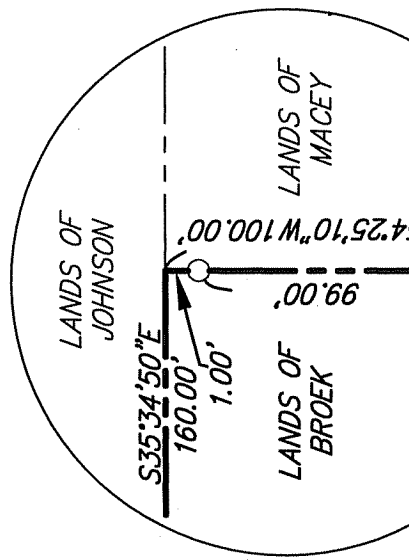
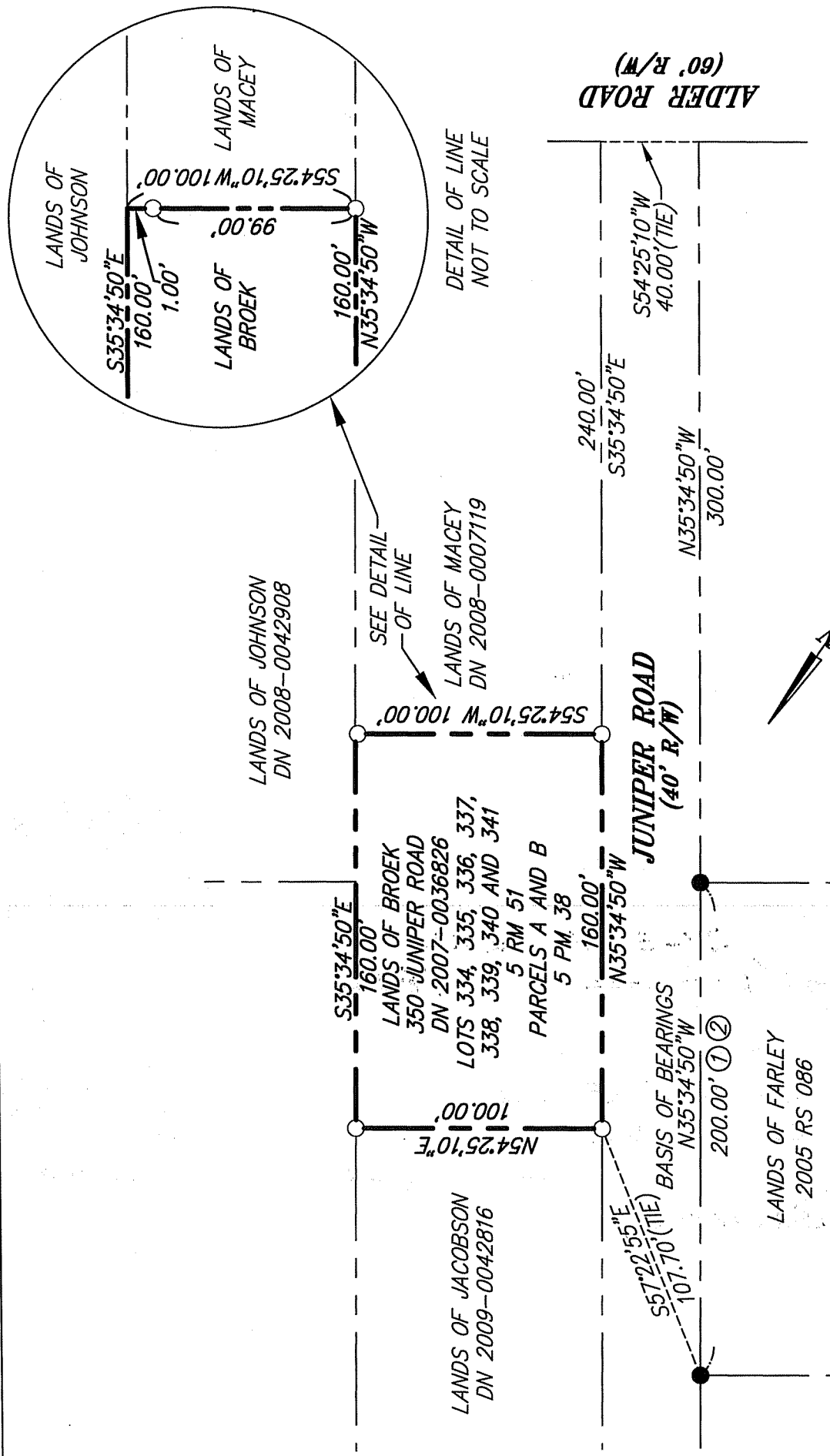
This Corner Record was received JUNE 25, 2012 and examined
and filed JULY 23, 2012

Signed [Signature] P.L.S. or R.C.E. No.: 7128

Title COUNTY SURVEYOR

County Surveyor's Comment _____





SEE DETAIL
-OF LINE

DETAIL OF LINE
NOT TO SCALE

LEGEND

- SET 3/4" IRON PIPE & YELLOW CAP "R.C.E. 18221"
- FOUND 1/2" REBAR AND YELLOW CAP "LS 5767"
PER 2005 RS 086.

REFERENCES:

- ① 5 RM 51
- ② 2005 RS 086.

SCALE: 1" = 60'

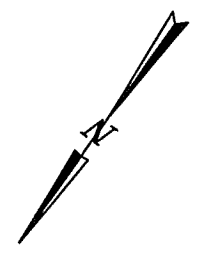


EXHIBIT A



ILS ASSOCIATES, INC.®
CIVIL ENGINEERING AND LAND SURVEYING

79 GALLI DRIVE, SUITE A NOVATO, CA 94946-6777 (415)985-6200 FAX (415)985-2768

A.P.N. 190-151-21

DATE: 06/19/2012
FILE: 8676CR.dwg
PAGE 2 OF 2