

CORNER RECORD

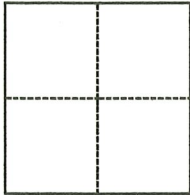
Agency Index CR21-141

Document Number APN 190-052-32

City of Unincorporated County of Marin, California

Brief Legal Description Lots 602 through 609, per 5 RM 51, MCR

CORNER TYPE



- Government Corner Control
 Meander Property
 Rancho Other

Date of Survey December 9, 2021

COORDINATES (Optional)

N. _____ E. _____

Elevation _____

Units Metric U.S. Survey Foot

Horizontal Datum _____

Zone _____ Epoch Date _____

Vertical Datum _____

Complies with Public Resources Code §§8801-8819

Complies with Public Resources Code §§8890-8902

PLS Act Ref.: 8765(d) 8771 8773 Other:

Corner/
 Monument: Left as found Established Rebuilt Pre-Construction
 Found and tagged Reestablished Referenced Post-Construction

Narrative of corner identified and monument as found, set, reset, replaced, or removed:

See sheet #2 for description(s):

Found iron pipes from Corner Record 190-041-32; found 2" original iron pipe at block corner; set 4 corners of exterior of lots 602-609.

SURVEYOR'S STATEMENT

This Corner Record was prepared by me or under my direction in conformance with

the Professional Land Surveyors' Act on July 28, 2022

Signed [Signature] P.L.S. or R.C.E. No. 7950



COUNTY SURVEYOR'S STATEMENT

This Corner Record was received 8/1/22

and examined and filed 8/3/22

Signed [Signature] P.L.S. or R.C.E. No. 8176

Title County Surveyor

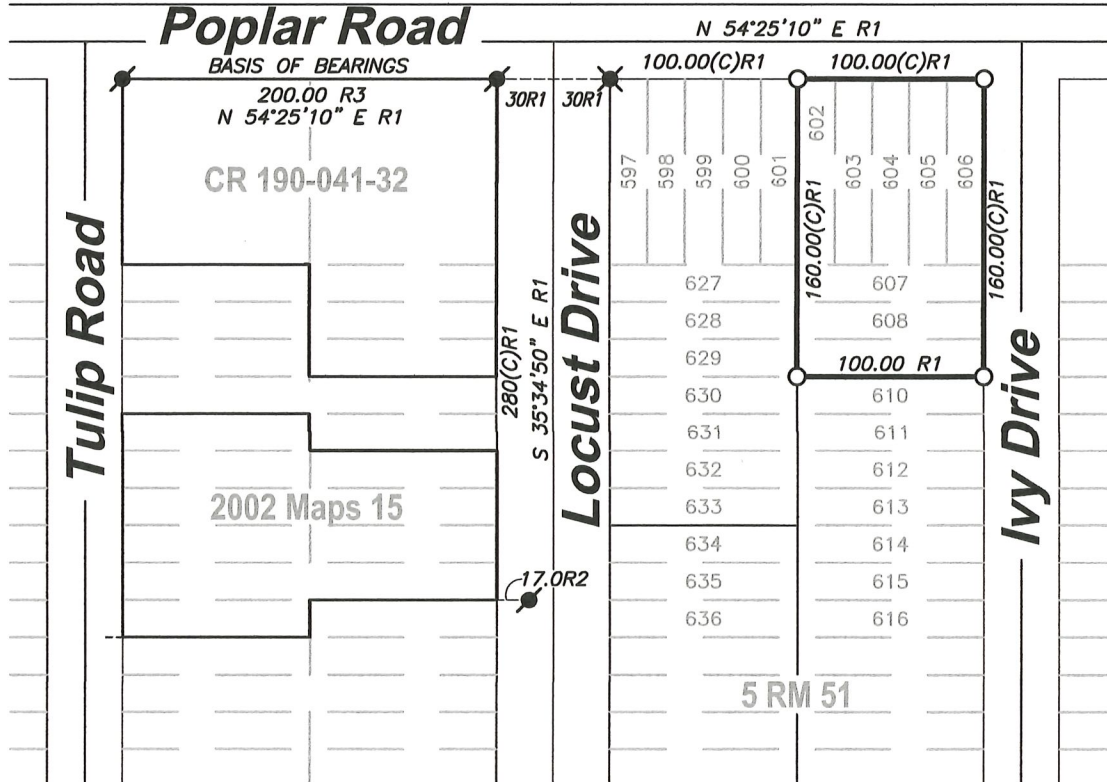


County Surveyor's Comment

Pursuant to Section 8773.2(c) of the Professional Land Surveyors' Act, it is the opinion of the County Surveyor that this corner record does not demonstrate that sufficient monumentation exists for the precise placement of the corners shown as "set" hereon.

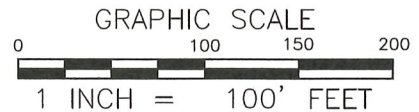
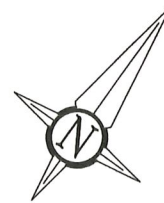
PURSUANT TO SECTION 8773.2(C) OF THE PROFESSIONAL LAND SURVEYORS' ACT, IT IS THE OPINION OF THIS SURVEYOR THAT SUFFICIENT EXISTING MONUMENTS WERE FOUND IN THIS RECTANGULAR SUBDIVISION TO ESTABLISH LOT CORNERS AS SHOWN HEREON.

SEARCHED FOR MONUMENT AT KALE ROAD NOTHING FOUND



LEGEND

- ✕ FOUND 2" IRON PIPE, FILLED WITH CONCRETE & NAIL, NO TAG, PER R1
- FOUND 3/4" IRON PIPE, YELLOW CAP, PLS 4694 PER R3
- SET 5/8" REBAR, YELLOW CAP PLS 7950
- R1 MAP OF VIAREGGIO, FILED IN BOOK 5 OF RECORD MAPS, AT PAGE 51, MCR
- R2 RECORD OF SURVEY, FILED IN BOOK 2002 OF MAPS, AT PAGE 15, MCR
- R3 CORNER RECORD FOR APN 190-041-32 FILED SEPTEMBER 6, 2005
- MCR MARIN COUNTY RECORDS



1031Survey, Inc.

HighDefinitionSurveying
1857 Rainier Circle, Petaluma, California, 94954
415-827-6370