

Annin Doyle

LICENSED LAND SURVEYORS CIVIL ENGINEERS
165 Helen Lane Mill Valley CA 94041 (415) 388-0367

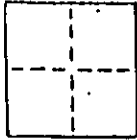
A.P. # 188-170-52

CORNER RECORD

COUNTY OF MARIN T. _____ R. _____ MERIDIAN _____ CALIFORNIA

CORNER TYPE: GOVT. CORNER MEANDER RANCHO CONTROL OTHER

CORNER IDENTIFICATION - DATE OF VISIT OCTOBER 31 1990



5/8" REBAR WITH CAP L.S. 4402

CORNER - LEFT AS FOUND FOUND AND TAGGED REESTABLISHED OBLITERATED CORNER RESULT

PHYSICAL DESCRIPTION OF CORNER FOUND; EVIDENCE AND METHOD USED TO IDENTIFY OR REESTABLISH

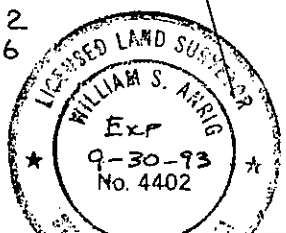
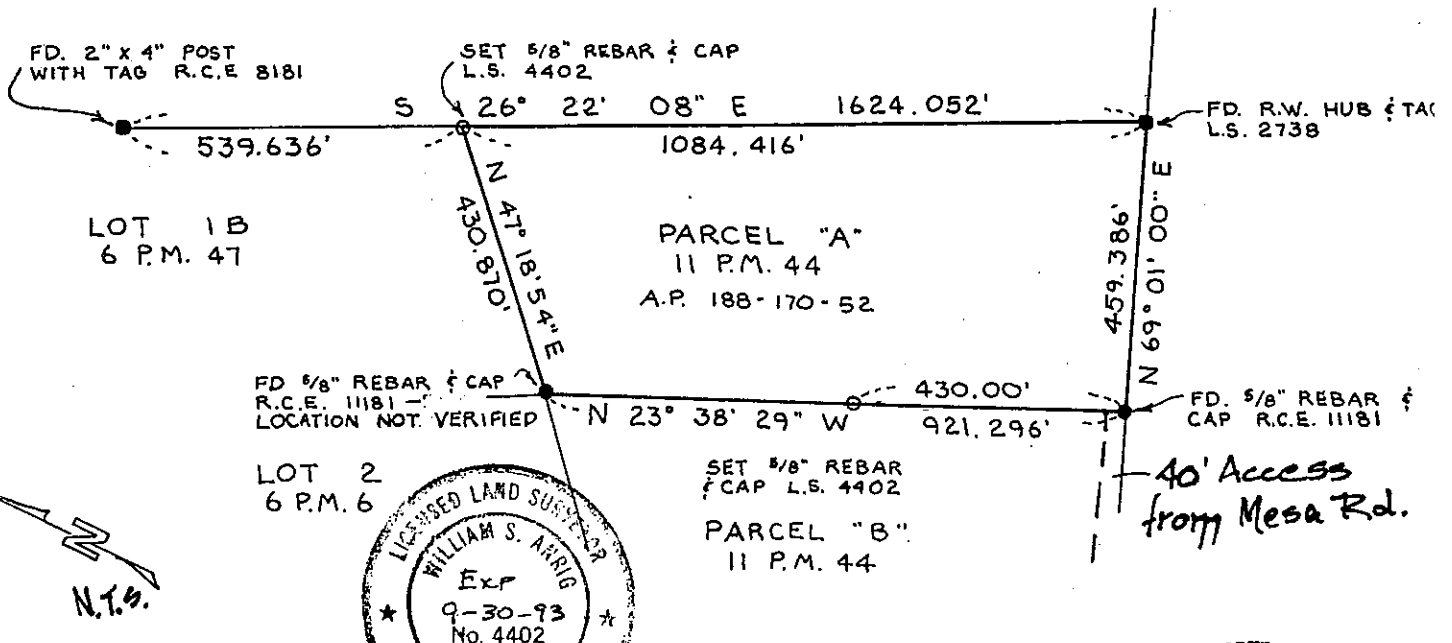
NO CORNER FOUND - SET 5/8" REBAR & CAP L.S. 4402
FOUND 2" X 4 POST WITH TAG R.C.E. 8181 AND R.W. HUB AND TAG L.S. 2738 PER
11 P.M. 44 BOLINAS.

PHYSICAL DESCRIPTION OF MONUMENTS, REBUILT OR PERPETUATED

SET 5/8" REBAR AND CAP L.S. 4402

CALIFORNIA COORDINATE SYSTEM ORDER: FIRST SECOND THIRD
STATIONS USED: NGS (USC & OS) STATE COUNTY OTHER STATION _____
ZONE _____ ELEVATION _____ NORTHINGS (Y) _____ EASTINGS (X) _____

SKETCH: (Include reference tie or witness points, remarks and topo of area)



SURVEYOR'S CERTIFICATION
THIS CORNER RECORD WAS PREPARED BY ME OR UNDER MY
DIRECTION IN CONFORMANCE WITH THE LAND SURVEYORS ACT
ON OCTOBER 31 1990
SIGNED: William S. Merrig
L.S. or R.C.E. No. L.S. 4402

COUNTY SURVEYOR
THE CORNER RECORD WAS RECEIVED
AND EXAMINED AND FILED
BY: _____
TITLE: _____
DOCUMENT No. _____
STATEMENT ON BACK OF SHEET
YES

